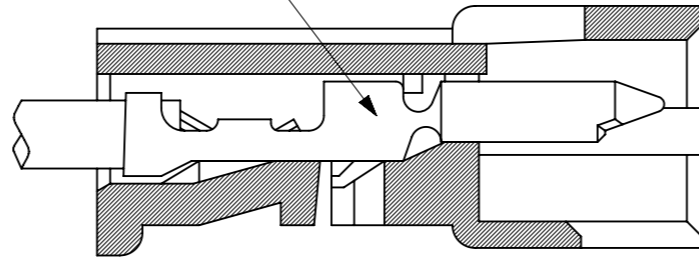
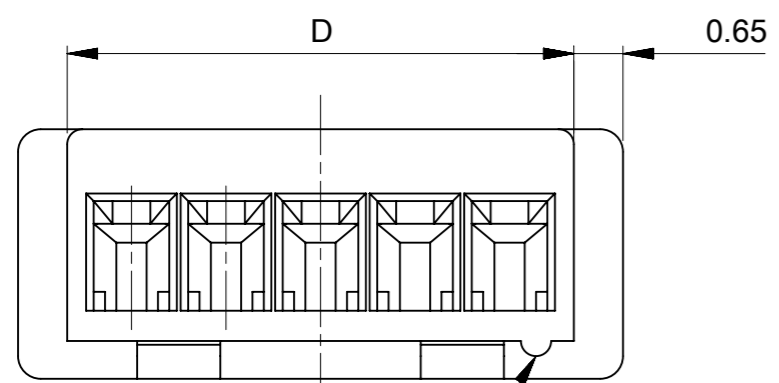
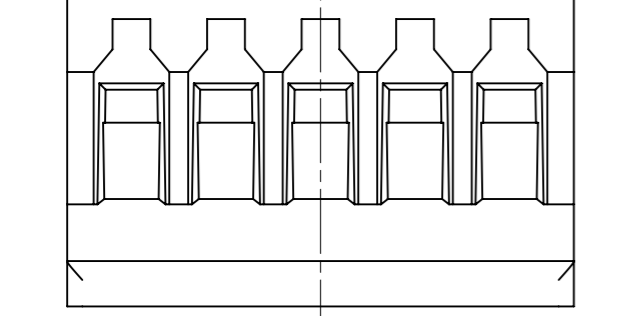
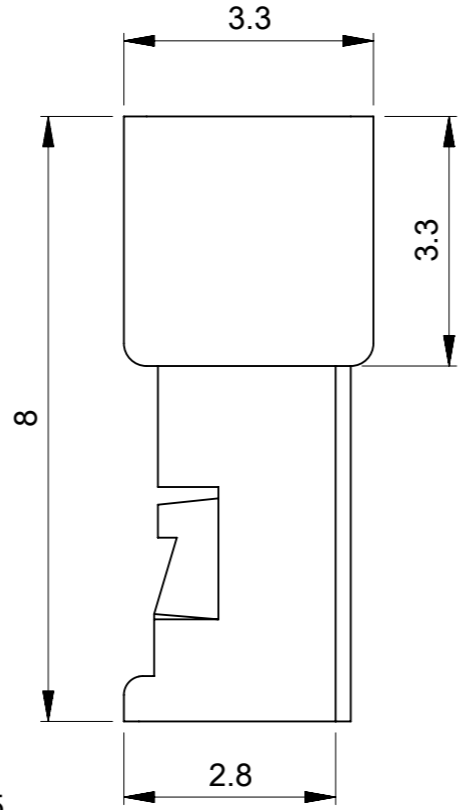
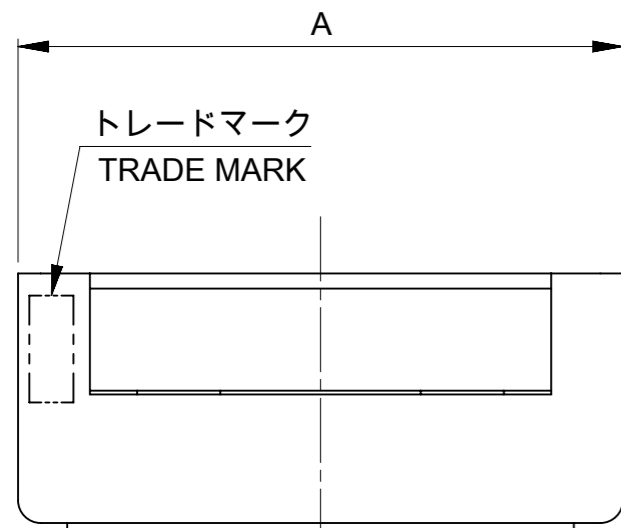


適合ターミナル: 50125, 50133 シリーズ  
 APPLICABLE TERMINAL: 50125, 50133 SERIES

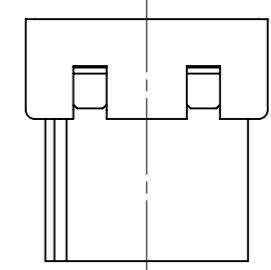
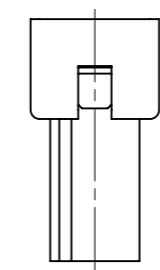


ターミナル装着状態図  
 TERMINAL ASSEMBLY DRAWING



NOTES

- ① 適合製品及び各種仕様書は SHEET 2を参照のこと。  
 REFER TO SHEET 2 ABOUT APPLICABLE PRODUCTS AND VARIOUS SPECIFICATIONS.
- ② 材質: TABLE 1 参照  
 MATERIAL: SEE TABLE 1
- ③ 発注番号  
 ORDER NO  
**51047 \*\* 00**  
 極数  
 CIRCUIT SIZE
- ④ ロック窓は、2,3極は1ヶ、4極以上は2ヶとする。  
 LOCKING WINDOW: ONE PLACE FOR 2 AND 3 CIRCUIT, AND TWO PLACES FOR MORE THAN 4 CIRCUIT.



④ 2,3極ロック窓形状  
 LOCKING WINDOW FOR 2, 3 CIRCUIT

④ 4極以上ロック窓形状  
 LOCKING WINDOW FOR MORE THAN 4 CIRCUIT

12.95	13.05	11.25	14.25	510471000	10
11.7	11.8	10	13	510470900	9
10.45	10.55	8.75	11.75	510470800	8
9.2	9.3	7.5	10.5	510470700	7
7.95	8.05	6.25	9.25	510470600	6
6.7	6.8	5	8	510470500	5
5.45	5.55	3.75	6.75	510470400	4
4.2	4.3	2.5	5.5	510470300	3
2.95	3.05	1.25	4.25	510470200	2
D	C	B	A	③ 発注番号 ORDER NO	極数 CIRCUIT
				梱包状態: ポリ袋 PACKAGING: POLYBAG	

② TABLE 1

部品 PART	材質 MATERIAL
ハウジング HOUSING	ポリエステル(PBT), UL94V-0, 色: ナチュラル(白) POLYESTER (PBT), UL94V-0, COLOR: NATURAL(WHITE)

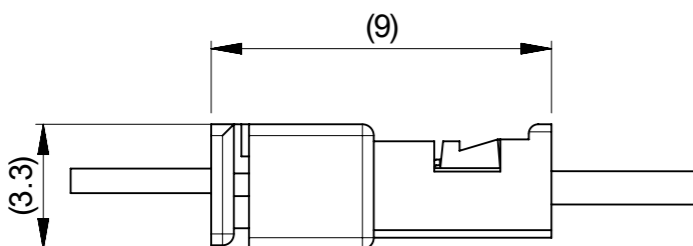
THIS DRAWING CONTAINS INFORMATION THAT IS PROPRIETARY TO MOLEX ELECTRONIC TECHNOLOGIES, LLC AND SHOULD NOT BE USED WITHOUT WRITTEN PERMISSION

DIMENSION UNITS	SCALE	CURRENT REV DESC: REVISED	<b>molex</b>		
mm	NTS				
GENERAL TOLERANCES (UNLESS SPECIFIED)			PICOBLADE 1.25 WTW PLUG HOUSING		
ANGULAR TOL	± 3.0°	EC NO: 698818	PRODUCT CUSTOMER DRAWING		
4 PLACES	± 0.2	DRWN: HHUSSIN 2022/02/16	DOCUMENT NUMBER		
3 PLACES	± 0.2	CHK'D: SAKIYAMA 2022/04/19	DOC TYPE		
2 PLACES	± 0.2	APPR: AIDA 2022/04/19	DOC PART		
1 PLACE	± 0.2	INITIAL REVISION:	REVISION		
0 PLACES	± 0.2	DRWN: QHE31 2021/06/28	510470000-SD		
DRAFT WHERE APPLICABLE MUST REMAIN WITHIN DIMENSIONS			APPR: KOMURAKAMI 2021/12/24	PSD	000
THIRD ANGLE PROJECTION			DRAWING	SERIES	SHEET NUMBER
A3-SIZE			51047	SEE CHART	1 OF 2

△ 1 適合製品及び各種仕様書  
 APPLICABLE PRODUCTS AND VARIOUS SPECIFICATIONS

梱包仕様書 PACKAGING SPECIFICATION		PART NUMBER 51047**00		DOCUMENT NUMBER 510479300-RPK 200	
適合プラグ端子 APPLICABLE PLUG TERMINAL		PLATING TYPE TIN		PART NUMBER 501258*00	WIRE SIZE(AWG) #26 - #28
				501338*00	#28 - #32
適合嵌合相手 MATE WITH		PART NUMBER 51021**00			
適合リセプタクル端子 APPLICABLE RECEPTACLE TERMINAL	PLATING TYPE	TIN			
	PART NUMBER	500798*00	500588*00	500798001	500588001
	WIRE SIZE (AWG)	#26-28	#28-32	#26-28	#28-32
製品仕様書 PRODUCT SPECIFICATION		PS-51021-009 PS 001		510211109-PS PS 000	
アプリケーション仕様書 (取扱説明書) APPLICATION SPECIFICATION		510210001-AS PS 000			

嵌合図  
 MATED CONNECTORS



THIS DRAWING CONTAINS INFORMATION THAT IS PROPRIETARY TO MOLEX ELECTRONIC TECHNOLOGIES, LLC AND SHOULD NOT BE USED WITHOUT WRITTEN PERMISSION									
DIMENSION UNITS mm	SCALE NTS	CURRENT REV DESC: REVISED			<b>molex</b>				
GENERAL TOLERANCES (UNLESS SPECIFIED)		EC NO: 698818							
ANGULAR TOL	± 3.0 °	DRWN: HHUSSIN 2022/02/16			PICOBLADE 1.25 WTW PLUG HOUSING				
4 PLACES	± 0.2	CHK'D: SAKIYAMA 2022/04/19			PRODUCT CUSTOMER DRAWING				
3 PLACES	± 0.2	APPR: AIDA 2022/04/19			DOCUMENT NUMBER				
2 PLACES	± 0.2	INITIAL REVISION:			510470000-SD		DOC TYPE	DOC PART	REVISION
1 PLACE	± 0.2	DRWN: QHE31 2021/06/28			PSD		000	B	
0 PLACES	± 0.2	APPR: KOMURAKAMI 2021/12/24			MATERIAL NUMBER		CUSTOMER	SHEET NUMBER	
DRAFT WHERE APPLICABLE MUST REMAIN WITHIN DIMENSIONS		THIRD ANGLE PROJECTION	DRAWING	SERIES	SEE CHART		2 OF 2		
			A3-SIZE	51047					