



Quality Products. Service Excellence.

Water-Tight ABS & Polycarbonate Enclosures *RP Series*

With Bottom Flange

Key Features



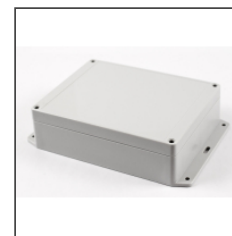
- Ideally suited for mounting printed circuit boards or components.
- Choice of two materials:
 - General purpose ABS with a flame rating of UL94-HB
 - Polycarbonate with a flame rating of UL94-V2
- Gasketed lid with two piece "tongue & groove" construction provides protection against access of oil, dust, and water.
- For version with no flanges, see **RP Series**.
- Rubber gasket is included and must be field installed.
- Lid includes smooth recessed area for membrane, label or silkscreen.
- Designed to meet IP65.
- Lid is secured with self captivating M3.5 stainless steel machine screws (included), threaded into corrosion resistant bushings (for repetitive assembly & disassembly).
- Lid screws are self captivating (lid holes are threaded with the first installation of lid screws).
- Internal features are maximized for mounting options:
 - Internal DIN rail mounting tabs
 - PC board mounting posts
 - Options vary with size, please refer to drawings by clicking on the part numbers below.
- Extra self-tapping M3.5-0.6 x 10mm lid screws: **SC619-50**
- Extra self-tapping M3 x 6mm PC Board screws: **SC622-50**



Opaque Lid (ABS version shown)



Clear Lid (polycarbonate version shown)



Shown with integral bottom flange.



Some models supplied with deep lids.



Hardware includes lid screws, PC board screws, and gasket



Features corrosion resistant inserts for lid assembly



Internal mounting points for PC boards or panels



Internal DIN rail mounting point.

RP Series With Bottom Flange

| Light Gray ABS Plastic Opaque Lid w/ Bottom Flange | Light Gray ABS Plastic Clear Lid w/ Bottom Flange | Off White Polycarbonate Opaque Lid w/ Bottom Flange | Off-White Polycarbonate Clear Lid w/ Bottom Flange | Length (mm) | Width (mm) | Height (mm) | Optional Inner Panels | | Replacement Gasket (2-pk) |
|--|---|---|--|----------------|---------------|----------------|--------------------------|----------|------------------------------|
| | | | | | | | Plastic | Aluminum | |
| RP1025BF | RP1025BFC | RP1020BF | RP1020BFC | 65 | 60 | 40 | STC102 | STA102 | RP102GASKET |
| RP1055BF | RP1055BFC | RP1050BF | RP1050BFC | 85 | 80 | 40 | STC106 | STA106 | RP106GASKET |
| RP1065BF | RP1065BFC | RP1060BF | RP1060BFC | 85 | 80 | 55 | STC106 | STA106 | RP106GASKET |
| RP1035BF | RP1035BFC | RP1030BF | RP1030BFC | 95 | 50 | 40 | STC104 | STA104 | RP103GASKET |
| RP1045BF | RP1045BFC | RP1040BF | RP1040BFC | 95 | 50 | 50 | STC104 | STA104 | RP103GASKET |
| RP1085BF | RP1085BFC | RP1080BF | RP1080BFC | 105 | 75 | 40 | STC109 | STA109 | RP108GASKET |
| RP1095BF | RP1095BFC | RP1090BF | RP1090BFC | 105 | 75 | 55 | STC109 | STA109 | RP108GASKET |
| RP1125BF | RP1125BFC | RP1120BF | RP1120BFC | 125 | 85 | 40 | STC113 | STA113 | RP113GASKET |
| RP1135BF | RP1135BFC | RP1130BF | RP1130BFC | 125 | 85 | 55 | STC113 | STA113 | RP113GASKET |
| RP1145BF | RP1145BFC | RP1140BF | RP1140BFC | 125 | 85 | 70 | STC113 | STA113 | RP113GASKET |
| RP1155BF | RP1155BFC | RP1150BF | RP1150BFC | 125 | 85 | 85 | STC113 | STA113 | RP113GASKET |
| RP1205BF | RP1205BFC | RP1200BF | RP1200BFC | 145 | 105 | 40 | STC121 | STA121 | RP120GASKET |
| RP1215BF | RP1215BFC | RP1210BF | RP1210BFC | 145 | 105 | 60 | STC121 | STA121 | RP120GASKET |
| RP1165BF | RP1165BFC | RP1160BF | RP1160BFC | 165 | 85 | 40 | STC117 | STA117 | RP117GASKET |
| RP1195BF | RP1195BFC | RP1190BF | RP1190BFC | 165 | 85 | 70 | STC117 | STA117 | RP117GASKET |
| RP1175BF | RP1175BFC | RP1170BF | RP1170BFC | 165 | 85 | 55 | STC117 | STA117 | RP117GASKET |
| RP1185BF | RP1185BFC | RP1180BF | RP1180BFC | 165 | 85 | 85 | STC117 | STA117 | RP117GASKET |
| RP1235BF | RP1235BFC | RP1230BF | RP1230BFC | 165 | 125 | 55 | STC124 | STA124 | RP124GASKET |
| RP1245BF | RP1245BFC | RP1240BF | RP1240BFC | 165 | 125 | 75 | STC124 | STA124 | RP124GASKET |
| RP1275BF | RP1275BFC | RP1270BF | RP1270BFC | 186 | 146 | 55 | STC128 | STA128 | RP128GASKET |
| RP1285BF | RP1285BFC | RP1280BF | RP1280BFC | 186 | 146 | 75 | STC128 | STA128 | RP128GASKET |
| RP1375BF | RP1375BFC | RP1370BF | RP1370BFC | 186 | 146 | 90 | STC128 | STA128 | RP128GASKET |
| RP1385BF | RP1385BFC | RP1380BF | RP1380BFC | 186 | 146 | 110 | STC128 | STA128 | RP128GASKET |

50-Pack of PC Board screws

| | |
|----------|----------|
| Part No. | SC622-50 |
|----------|----------|

50-pack of Replacement Lid Screws

| | |
|----------|----------|
| Part No. | SC619-50 |
|----------|----------|

Tags: plastic, project box, ABS, polycarbonate, watertight, inner panel, flanged, bottom flange, flanged *Data subject to change without notice*
lid

© 2026. Hammond Manufacturing Ltd. All rights reserved.