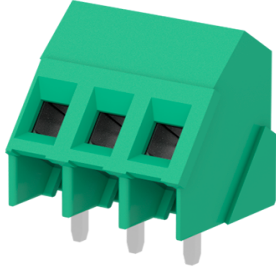


MSM07041 - Terminal block

<https://www.sauro.net/product/MSM07041>



Number of poles: 7, Clamp tightening, 24A, 2.5mm², 12AWG, 300V, Pitch 5 mm, Modular, Connection Angle 35°, Number of levels: 1, Green (RAL 6032), Soldering technology Wave, UL, VDE, IMQ, CSA, CUL

General data

Number of poles	7
Number of levels	1
Sides configuration	Modular
Pitch	5 mm
Voltage	300 V
Current	24 A
Housing composition	Monolithic
Wire section	2.5 mm ²
Wire section	30 AWG ÷ 12 AWG
Connection angle	35°
Available approvals	UL, VDE, IMQ, CSA, CUL
Stripping length	6.5 mm

Features

Screw dimension	M3
Recommended tightening torque	0.5 Nm
Operating temperature range	-40°C ÷ 105°C
Climatic category	-40/105/21 according to EN60068-1
Contact resistance	<15 mOhm
Insulation resistance	>1 GOhm

Certifications

<https://www.sauro.net/product/MSM07041>

MSM07041 - Terminal block

<https://www.sauro.net/product/MSM07041>

CSA (n.LR 102896)

Rated voltage	300 V
Nominal current	20 A
Wire section	12 AWG
Tightening torque	7 lbf x in

CUL (n.E167473)

Rated voltage	300 V
Nominal current	17.5 A
Wire section	30 AWG ÷ 12 AWG

IMQ (n.EA022)

Rated voltage	250 V		
Nominal current	24 A		
Wire section solid / stranded	2.5 mm ² / 2.5 mm ²		
Tightening torque	0.5 Nm		
Insulating category	I		
Overvoltage category/Pollution degree	III/3	III/2	II/2
Impulse voltage	4kV	4kV	4kV
Rated voltage	220V	300V	600V
Insulation voltage	250V	320V	630V
Maximum temp usage	110		

UL (n.E167473)

Usage group	B	C	D*
Rated voltage	300 V	-	300 V
Nominal current		17.5 A	
Wire section		30 AWG ÷ 12 AWG	
Tightening torque		7 lbf x in	

* These limited ratings are applicable to a terminal block for use in or with industrial control equipment whereby the load on any single circuit of the terminal block does not exceed 15A at 51-150V, 10A at 151-300V, or 5A at 301-600V, or the maximum ampere rating, whichever is less.

VDE (n.40022741 Reg.-Nr. C517)

Rated voltage	250 V
Nominal current	24 A
Wire section	2.5 mm ²
Maximum temp usage	110

Materials

<https://www.sauro.net/product/MSM07041>

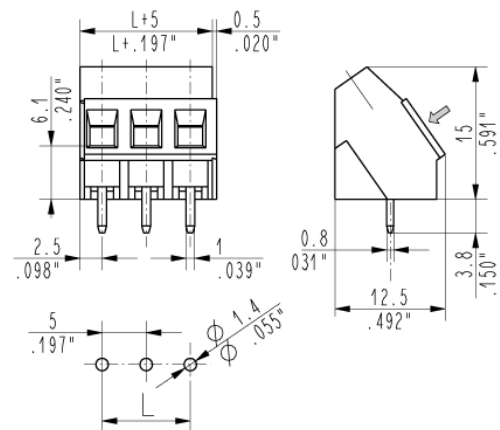
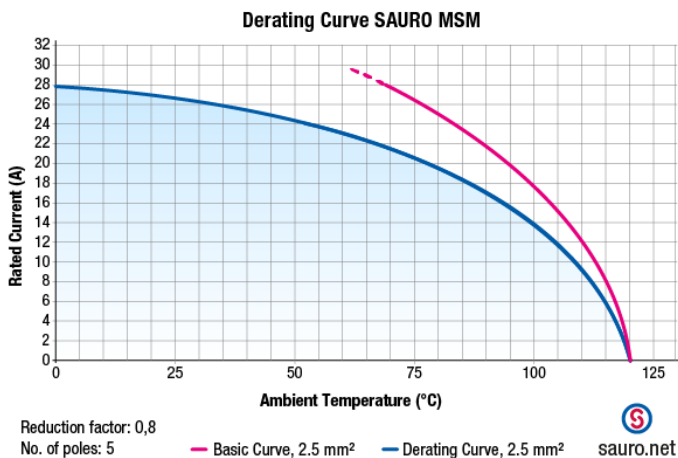
MSM07041 - Terminal block

<https://www.sauro.net/product/MSM07041>

Screw material	Nickel-plated copper alloy
Terminal contact	Nickel and tin on copper alloy
Clamp tightening	Nickel-plated copper alloy
Insulating housing material	PA Polyamide
Insulating material group	I (CTI \geq 600V)
Flammability rating according to UL94	V0
Glow Wire Flammability Index GWFI according to EN60695-2-12	850°C
Glow Wire Ignition Temperature GWIT according to EN60695-2-13	775°C

Available colors

Green	similar toRAL 6032
Dark green	similar to RAL 6017
Black	similar to RAL 9005
Light gray	similar to RAL 7035
Dark gray	similar to RAL 7040
Orange	similar to RAL 2003
Blue	similar to RAL 5012
Brown	similar to RAL 8028
Yellow	similar to RAL 1018
White	similar to RAL 9001
Red	similar to RAL 3017
Another color	on demand



<https://www.sauro.net/product/MSM07041>