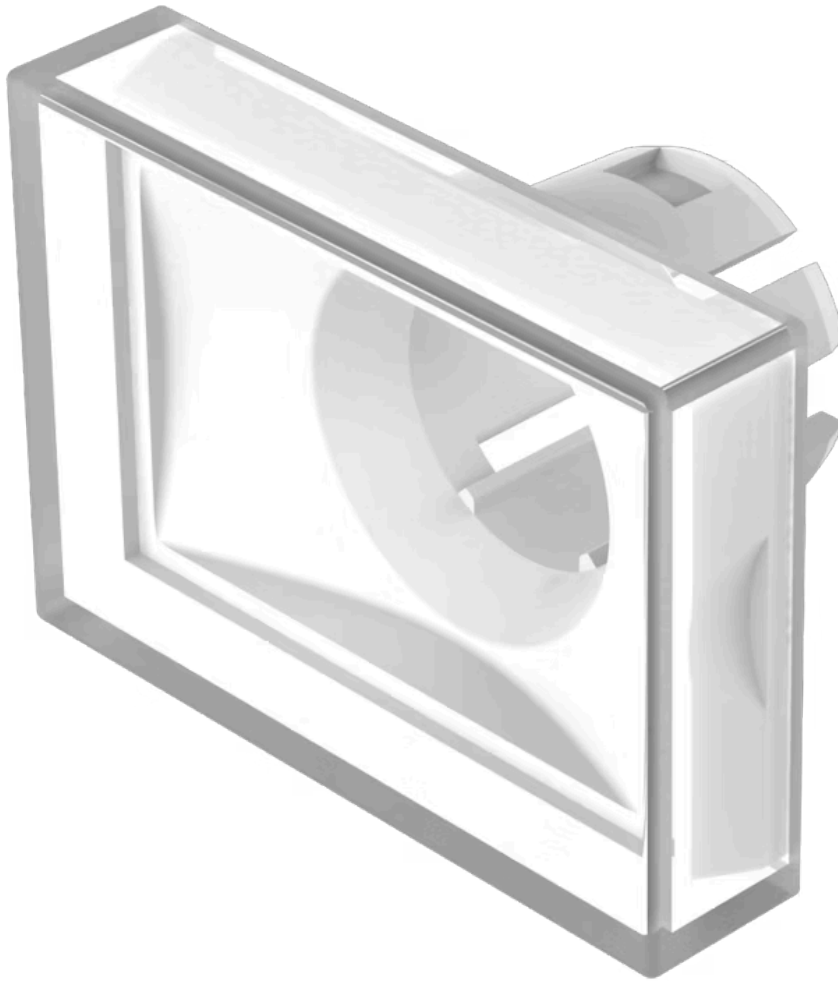


Lens

61-
9231.9



<https://eao.com/p/61-9231.9>

Your product:



61-9231.9 Lens

FRONT

Front form: rectangular

OPERATING-/INDICATION PART

Lens colour: White

Lens material: Plastic, according to UL 94 HB

Lens illumination: non illuminative

Lens shape: flush

Lens optics: transparent

MECHANICAL CHARACTERISTIC

Weight: 0.002 kg

CERTIFICATE

REACH: REACH compliant

RoHS: RoHS compliant

OTHER

Short Description: Lens, 21.5 mm x 15.3 mm, non illuminative, White, flush, Plastic, according to UL 94 HB

Dimension: 21.5 mm x 15.3 mm

