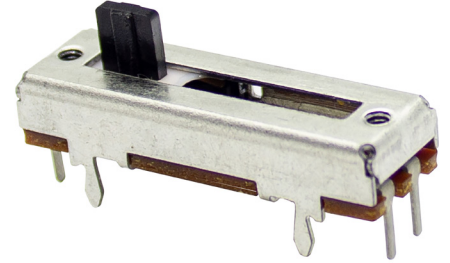




SERIES: PTNS2 | DESCRIPTION: SLIDE POTENTIOMETER

FEATURES

- multiple travel length options
- plastic and metal lever options
- carbon element



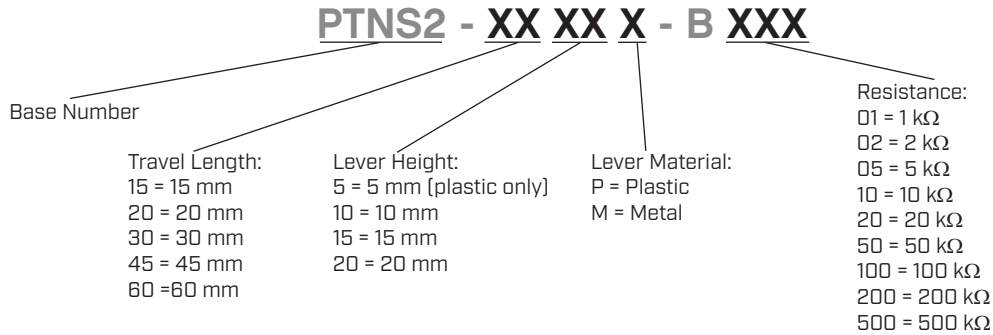
SPECIFICATIONS

parameter	conditions/description	min	typ	max	units
maximum operating voltage				200	Vac
power rating				0.25	W
taper	linear				
standard resistance range	see Resistance Table	1		500	k Ω
standard resistance tolerance			± 20		%
residual resistance				20	m Ω
sliding noise				100	mV
insulation resistance	at 250 Vdc	10			M Ω
withstand voltage	for 1 minute		300		Vac
operating temperature		-10		75	$^{\circ}$ C
hand soldering	for 3 seconds max			300	$^{\circ}$ C
wave soldering	for 5 seconds max			260	$^{\circ}$ C
RoHS	yes				

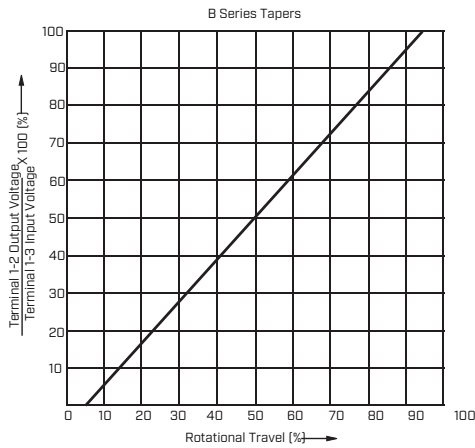
MECHANICAL

parameter	conditions/description	min	typ	max	units
travel length	15, 20, 30, 45, 60 mm models				mm
operating force		30		150	gf
stop strength		5			kgf
sliding life	at 10-15 cycles/minute, no load		10,000		cycles
weight	15 mm travel length models	2.8	3.3	3.8	g
	20 mm travel length models	3.2	3.7	4.2	g
	30 mm travel length models	3.8	4.3	4.8	g
	45 mm travel length models	5.0	5.5	6.0	g
	60 mm travel length models	6.1	6.6	7.1	g

PART NUMBER KEY



TAPERS



LEVER TYPES

units: mm

tolerance:

$X \leq 10.00$: ± 0.30 mm

$10.00 < X \leq 30.00$: ± 0.50 mm

$30.00 < X \leq 100.00$: ± 1.0 mm

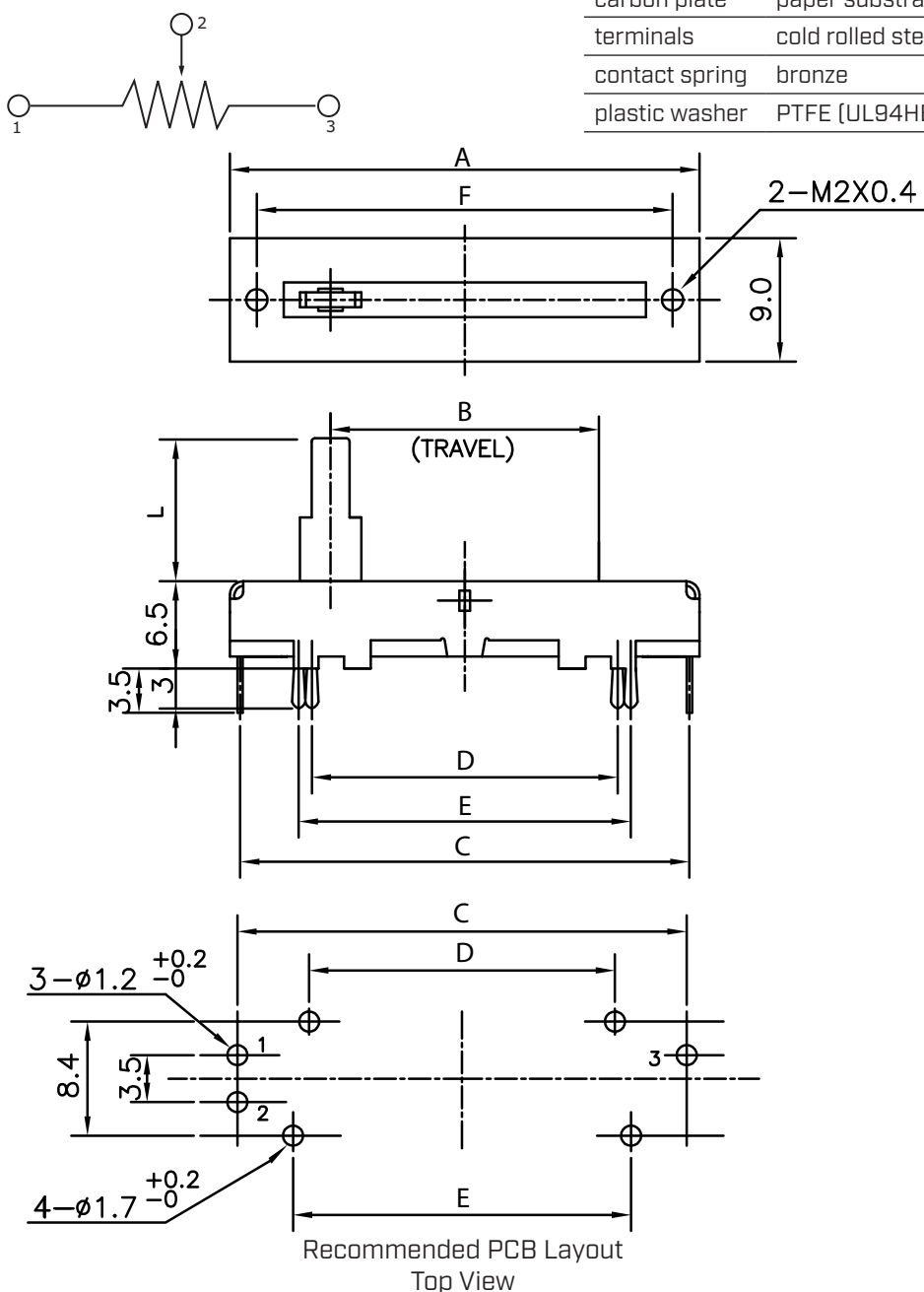
unless otherwise noted

5 mm, Plastic Type	Plastic Type	Metal Type																
<table border="1" style="margin: auto;"> <tr> <td>L</td> <td>10</td> <td>15</td> <td>20</td> </tr> </table>	L	10	15	20	<table border="1" style="margin: auto;"> <tr> <td>L</td> <td>10</td> <td>15</td> <td>20</td> </tr> </table>	L	10	15	20	<table border="1" style="margin: auto;"> <tr> <td>L</td> <td>10</td> <td>15</td> <td>20</td> </tr> <tr> <td>F</td> <td>7</td> <td>10</td> <td>10</td> </tr> </table>	L	10	15	20	F	7	10	10
L	10	15	20															
L	10	15	20															
L	10	15	20															
F	7	10	10															

MECHANICAL DRAWING (15, 20, 30 MM TRAVEL LENGTH MODELS)

units: mm
 tolerance:
 $X \leq 10.00$: ± 0.30 mm
 $10.00 < X \leq 30.00$: ± 0.50 mm
 $30.00 < X \leq 100.00$: ± 1.0 mm
 unless otherwise noted

DESCRIPTION	MATERIAL	PLATING/COLOR
plastic lever	POM (UL94HB)	black
metal lever	cold rolled steel	nickel
reed	zinc alloy	white copper
housing	cold rolled steel	tin
carbon plate	paper substrate	---
terminals	cold rolled steel	tin
contact spring	bronze	tin
plastic washer	PTFE (UL94HB)	white

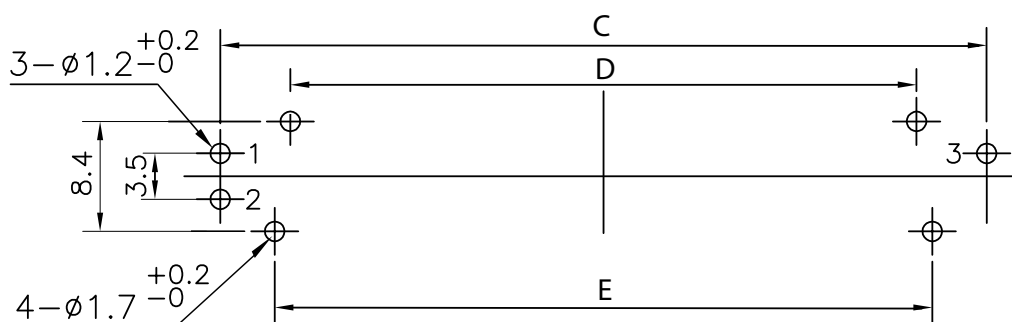
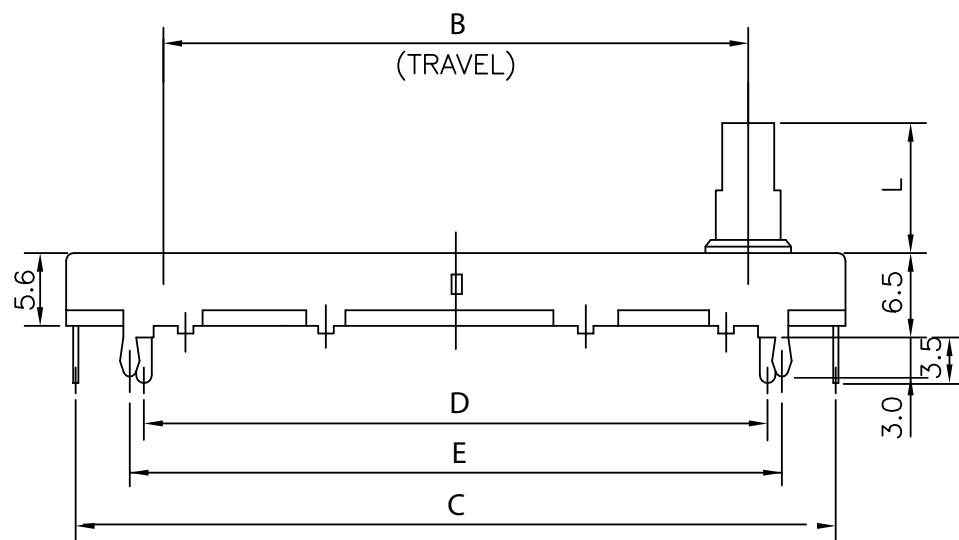
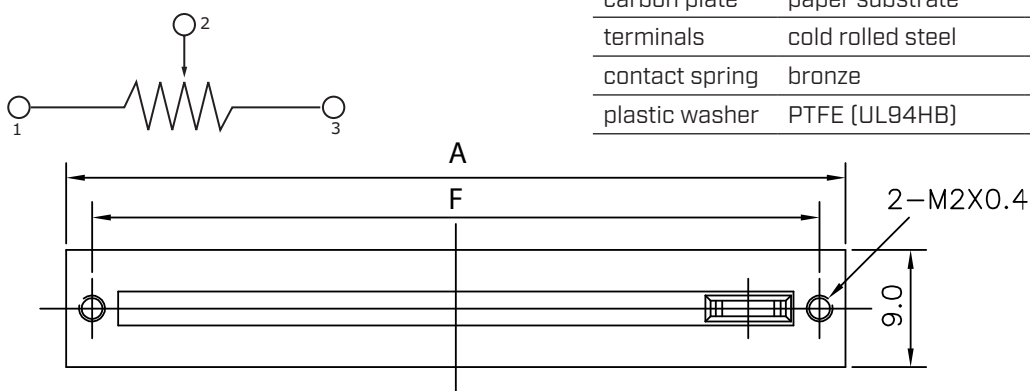


TRAVEL LENGTH MODELS	A [mm]	B [mm]	C [mm]	D [mm]	E [mm]	F [mm]
15	30	15	28.5	17.8	20.2	26
20	35	20	33.5	22.8	25.2	31
30	45	30	43.5	32.8	35.2	41

MECHANICAL DRAWING (45, 60 MM TRAVEL LENGTH MODELS)

units: mm
 tolerance:
 $X \leq 10.00$: ± 0.30 mm
 $10.00 < X \leq 30.00$: ± 0.50 mm
 $30.00 < X \leq 100.00$: ± 1.0 mm
 unless otherwise noted

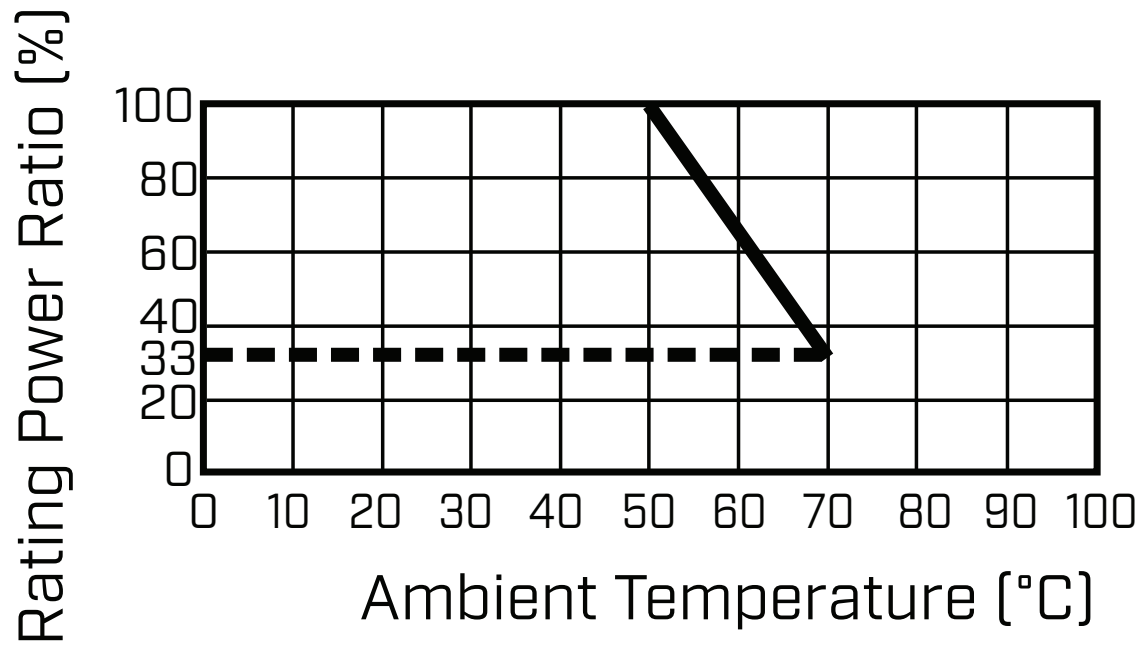
DESCRIPTION	MATERIAL	PLATING/COLOR
plastic lever	POM (UL94HB)	black
metal lever	cold rolled steel	nickel
reed	zinc alloy	white copper
housing	cold rolled steel	tin
carbon plate	paper substrate	---
terminals	cold rolled steel	tin
contact spring	bronze	tin
plastic washer	PTFE (UL94HB)	white



Recommended PCB Layout
Top View

TRAVEL LENGTH MODELS	A [mm]	B [mm]	C [mm]	D [mm]	E [mm]	F [mm]
45	60	45	58.5	47.8	50.2	56
60	75	60	73.5	62.8	65.2	71

POWER DERATING CURVE



REVISION HISTORY

rev.	description	date
1.0	initial release	11/24/2025

The revision history provided is for informational purposes only and is believed to be accurate.



Same Sky offers a one (1) year limited warranty. Complete warranty information is listed on our website.

Same Sky reserves the right to make changes to the product at any time without notice. Information provided by Same Sky is believed to be accurate and reliable. However, no responsibility is assumed by Same Sky for its use, nor for any infringements of patents or other rights of third parties which may result from its use.

Same Sky products are not authorized or warranted for use as critical components in equipment that requires an extremely high level of reliability. A critical component is any component of a life support device or system whose failure to perform can be reasonably expected to cause the failure of the life support device or system, or to affect its safety or effectiveness.

[sameskydevices.com](https://www.sameskydevices.com)