

Profile - UM -PROFIL

2952020

<https://www.phoenixcontact.com/us/products/2952020>



Please be informed that the data shown in this PDF document is generated from our Online Catalog. Please find the complete data in the user documentation. Our General Terms of Use for Downloads are valid.



Press-drawn section housings, Basic profile, open, length: 2000 mm, cross connection: without bus connector, color: green, Note: profile length = PCB length - 3 mm (UM 25 and UM 45)
Profile length = PCB length - 3.6 mm (UM_72, UM 100, UM_108)
Profile length =PCB length - 9.5 mm (UM_122)

Your advantages

- Flexible size and shape
- Fast mounting
- Inexpensive as a result of reducing the number of separate housing parts

Commercial Data

Item number	2952020
Packing unit	1 pc
Minimum order quantity	1 pc
Note	Made to Order (non-returnable)
Sales Key	A13
Product Key	ACHDBA
Catalog Page	Page 754 (C-1-2013)
Customs tariff number	39162000
Country of origin	DE

Profile - UM -PROFIL

2952020

<https://www.phoenixcontact.com/us/products/2952020>

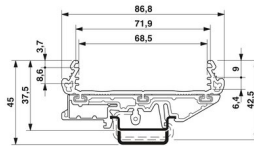


Technical Data

Product properties

Product type	Complete housing
Type	Basic profile
Housing type	Press-drawn section housings
Housing series	UM

Dimensions

Dimensional drawing	
Depth	127.5 mm
	25 mm
	45 mm
Length	2000 mm

Material specifications

Color	green
Flammability rating according to UL 94	V0
Surface characteristics	untreated
Housing material	PVC

Environmental and real-life conditions

Ambient conditions

Ambient temperature (operation)	-15 °C ... 50 °C
---------------------------------	------------------

Profile - UM -PROFIL

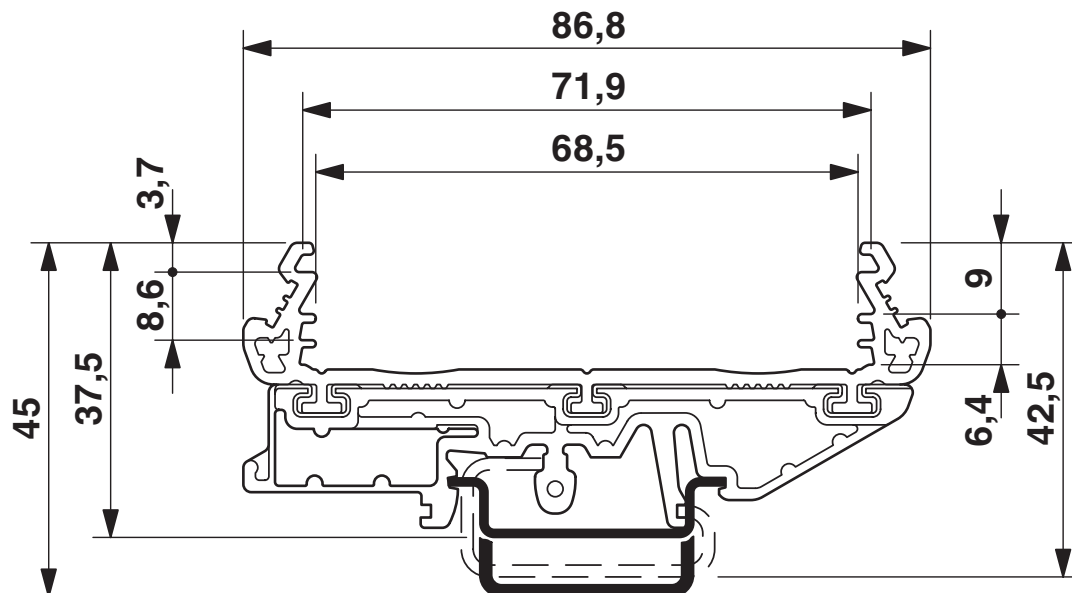
2952020

<https://www.phoenixcontact.com/us/products/2952020>

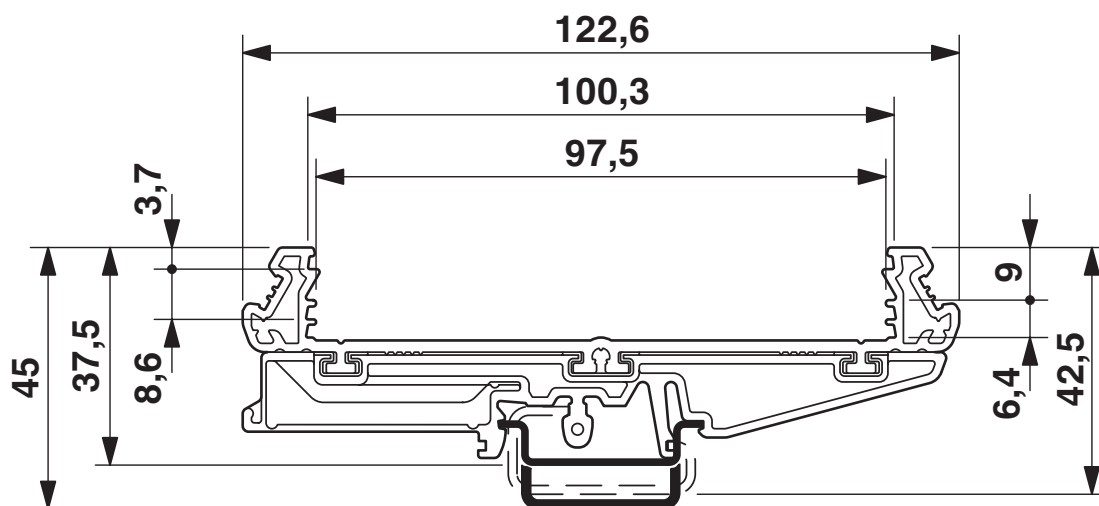


Drawings

Dimensional drawing



Dimensional drawing



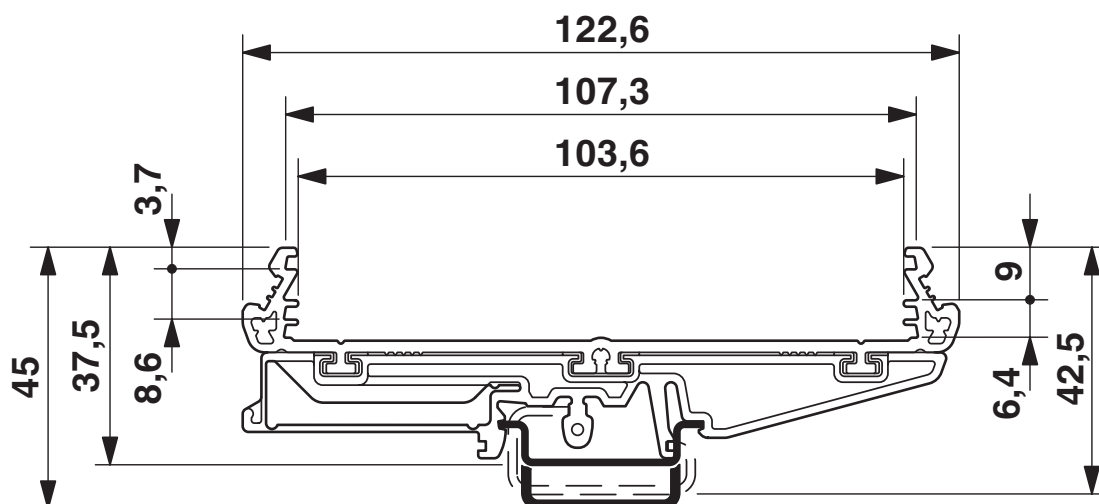
Profile - UM -PROFIL

2952020

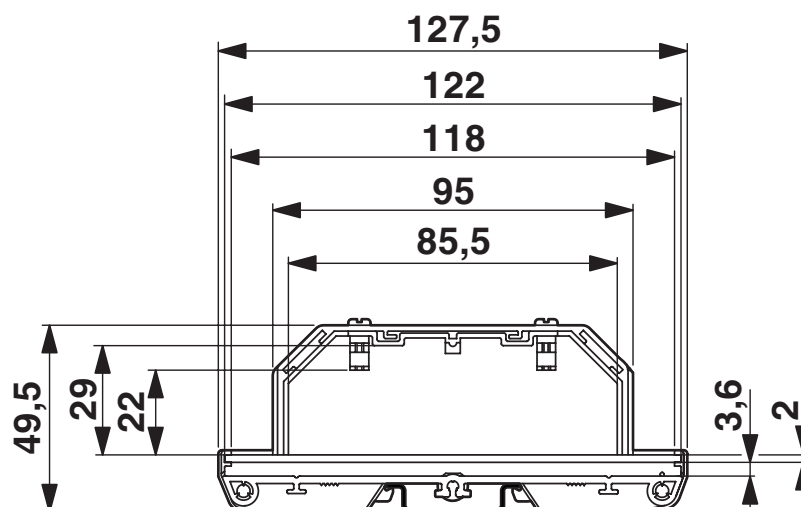
<https://www.phoenixcontact.com/us/products/2952020>



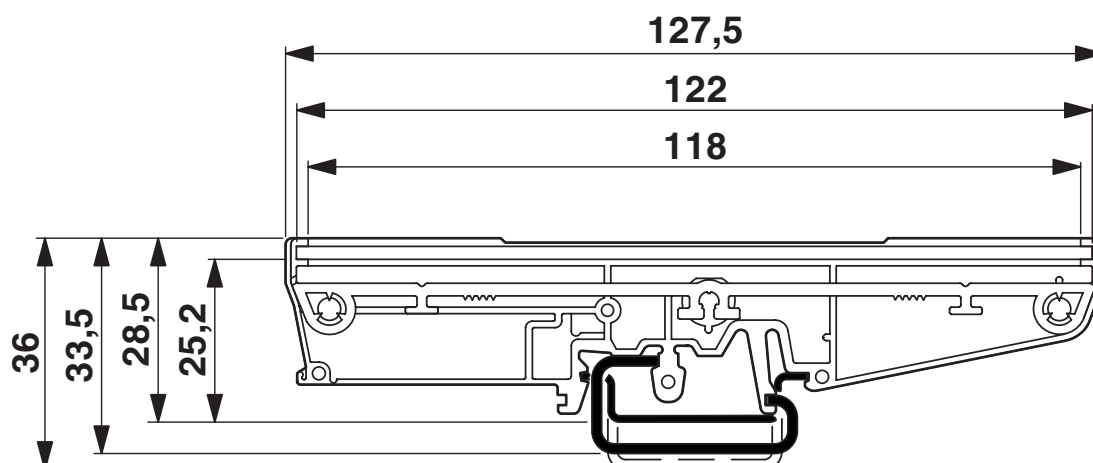
Dimensional drawing



Dimensional drawing



Dimensional drawing



Profile - UM -PROFIL

2952020

<https://www.phoenixcontact.com/us/products/2952020>



Approvals



EAC

Approval ID: B.01687

2952020

<https://www.phoenixcontact.com/us/products/2952020>

Classifications

ECLASS

ECLASS-9.0	27182701
ECLASS-10.0.1	27182701
ECLASS-11.0	27182791

ETIM

ETIM 8.0	EC001031
----------	----------

UNSPSC

UNSPSC 21.0	31261500
-------------	----------

Environmental Product Compliance

China RoHS	Environmentally friendly use period: unlimited = EFUP-e
	No hazardous substances above threshold values

2952020

<https://www.phoenixcontact.com/us/products/2952020>

Accessories

Module marker carrier

Module marker carrier - PMB - 1004364

<https://www.phoenixcontact.com/us/products/1004364>



Phoenix module marker carrier, for labeling modules and PCBs, for hole diameter 3.9 to 4.1 mm, thickness of wall or board 1.5 - 2.0 mm, labeling with insert strips ESL, EST or ES/LP-BW-GB, lettering field: 29 x 8 mm

Marker pen

Marker pen - B-STIFT - 1051993

<https://www.phoenixcontact.com/us/products/1051993>



Marker pen, for manual labeling of unprinted Zack strips, smear-proof and waterproof, line thickness 0.5 mm

Profile - UM -PROFIL

2952020

<https://www.phoenixcontact.com/us/products/2952020>



Foot element

Foot element - UM122-FE - 2909471

<https://www.phoenixcontact.com/us/products/2909471>

UM 122 FE foot element, for UM 122 profile housing



Insert strip

Insert strip - AP-ES - 5022685

<https://www.phoenixcontact.com/us/products/5022685>



Insert strip, white, unlabeled, mounting type: insert, for terminal block width: 35 mm, lettering field size: 35 x 500 mm

Profile - UM -PROFIL



2952020

<https://www.phoenixcontact.com/us/products/2952020>

Foot element

Foot element - UM 72-FE - 2959382

<https://www.phoenixcontact.com/us/products/2959382>

Foot element, 72 mm wide, for mounting on NS 32 or NS 35/7.5, below profile housing UM 72.



Mounting flange

Mounting flange - UMK-BF - 2976077

<https://www.phoenixcontact.com/us/products/2976077>

Mounting flange, for mounting directly on the wall



Profile - UM -PROFIL

2952020

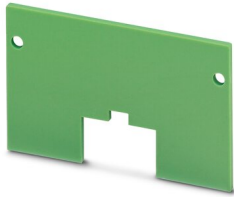
<https://www.phoenixcontact.com/us/products/2952020>



Lateral element

Lateral element - UM 45-SEAS - 2907554

<https://www.phoenixcontact.com/us/products/2907554>



Press-drawn section housings, Side cover, with snap-on foot, height: 45 mm, color: green, Note: when using this lateral element, profile length = PCB length.

Foot element

Foot element - UM 25/45-FEO 200 - 2959434

<https://www.phoenixcontact.com/us/products/2959434>



Foot element, is inserted in the profile housing, limit stop with screw. Mounted at right angles to the NS 35/7.5 DIN rail

2952020

<https://www.phoenixcontact.com/us/products/2952020>

Contactor marker - zack marker strip

Contactor marker - zack marker strip - SS-ZB WH - 5031171

<https://www.phoenixcontact.com/us/products/5031171>

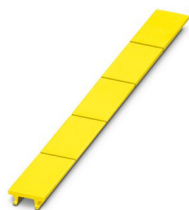


Contactor marker - zack marker strip, Strip, white, unlabeled, can be labeled with: CMS-P1-PLOTTER, mounting type: snapped, lettering field size: 20 mm x 8 mm, Number of individual labels: 5

Contactor marker - zack marker strip

Contactor marker - zack marker strip - SS-ZB YE - 5031650

<https://www.phoenixcontact.com/us/products/5031650>



Contactor marker - zack marker strip, Strip, yellow, unlabeled, can be labeled with: CMS-P1-PLOTTER, mounting type: snapped, lettering field size: 20 mm x 8 mm, Number of individual labels: 5

Profile - UM -PROFIL



2952020

<https://www.phoenixcontact.com/us/products/2952020>

Foot element

Foot element - UM108-FE - 2959463

<https://www.phoenixcontact.com/us/products/2959463>

Foot element, 107.5 mm wide, for mounting on NS 32 or NS 35/7.5, below profile housing UM 108.



Lateral element

Lateral element - UM 45-SE - 2906131

<https://www.phoenixcontact.com/us/products/2906131>

Press-drawn section housings, Side cover, without snap-on foot, color: green,
Note: when using this lateral element, profile length = PCB length.



Profile - UM -PROFIL

2952020

<https://www.phoenixcontact.com/us/products/2952020>



Lateral element

Lateral element - UM 45-SES - 2959308

<https://www.phoenixcontact.com/us/products/2959308>

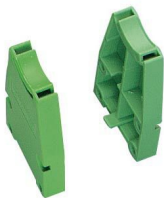


Side element, with marker groove, labeling with SS-ZB. Width: 11 mm, length: 45 mm, height: 21 mm

Lateral element

Lateral element - UM 45-SEK - 2959311

<https://www.phoenixcontact.com/us/products/2959311>



Side element, with cable fixture, 6 mm wide, cables fixed with cable ties, these are not included in the scope of delivery.

Profile - UM -PROFIL

2952020

<https://www.phoenixcontact.com/us/products/2952020>



Lateral element

Lateral element - UM 45-SEFE O.N. - 2959793

<https://www.phoenixcontact.com/us/products/2959793>



Press-drawn section housings, Lateral element, color: green (6021), with snap-on foot, depth: 45 mm, Note: when using this lateral element, profile length = PCB length.

Lateral element

Lateral element - UM 72-SE - 2959337

<https://www.phoenixcontact.com/us/products/2959337>



Side element, 5 mm wide, PCB width: 72 mm

Profile - UM -PROFIL

2952020

<https://www.phoenixcontact.com/us/products/2952020>



Lateral element

Lateral element - UM 72-SEPEF/L - 2906487

<https://www.phoenixcontact.com/us/products/2906487>

Side element, left, with foot, width: 5 mm, length: 72 mm, for mounting on NS 32 or NS 35/7.5, with PE contact to the DIN rail



Lateral element

Lateral element - UM 72-SEFE/R - 2959353

<https://www.phoenixcontact.com/us/products/2959353>

Side element, right, with foot, width: 5 mm, width: 72 mm, for mounting on NS 32 or NS 35/7.5



Profile - UM -PROFIL

2952020

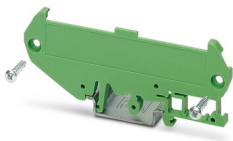
<https://www.phoenixcontact.com/us/products/2952020>

Lateral element

Lateral element - UM 72-SEFE/L - 2959340

<https://www.phoenixcontact.com/us/products/2959340>

Side element, left, with foot, width: 5 mm, length: 72 mm, for mounting on NS 32 or NS 35/7.5

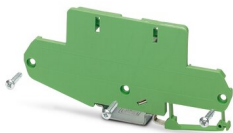


Lateral element

Lateral element - UM108 N-SEPEF/L-A73 - 2709370

<https://www.phoenixcontact.com/us/products/2709370>

Side element with foot, low-profile design, left, for 73 mm wide U-shaped cover, with PE contact to the DIN rail.



Profile - UM -PROFIL



2952020

<https://www.phoenixcontact.com/us/products/2952020>

Lateral element

Lateral element - UM108-SEPEF/L-A73 - 2906513

<https://www.phoenixcontact.com/us/products/2906513>



Side element with foot, tall design, left, for 73 mm wide U-shaped cover, with PE contact to the DIN rail.

Lateral element

Lateral element - UM108-SEPEF/L-A60 - 2906500

<https://www.phoenixcontact.com/us/products/2906500>



Side element with foot, tall design, left-hand, for 60 mm wide U-shaped cover, with PE contact to the DIN rail.

Profile - UM -PROFIL



2952020

<https://www.phoenixcontact.com/us/products/2952020>

Lateral element

Lateral element - UM108 N-SEFE/L-A73 - 2709367

<https://www.phoenixcontact.com/us/products/2709367>

Side element, with foot, low-profile version, left-hand, for 73 mm wide U-shaped cover.

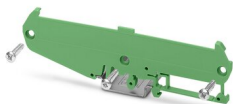


Lateral element

Lateral element - UM108-SEFE/L - 2959696

<https://www.phoenixcontact.com/us/products/2959696>

Side element with foot, 5 mm wide (left), for mounting on NS 32 or NS 35/7.5.
PCB width: 107.5 mm



Profile - UM -PROFIL



2952020

<https://www.phoenixcontact.com/us/products/2952020>

Lateral element

Lateral element - UM108 N-SEFE/R-A73 - 2709354

<https://www.phoenixcontact.com/us/products/2709354>

Side element, with foot, low-profile version, right-hand, for 73 mm wide U-shaped cover.



Lateral element

Lateral element - UM108-SEFE/R - 2959683

<https://www.phoenixcontact.com/us/products/2959683>

Side element with foot, 5 mm wide (right), for mounting on NS 32 or NS 35/7.5.
PCB width: 107.5 mm



Profile - UM -PROFIL



2952020

<https://www.phoenixcontact.com/us/products/2952020>

Lateral element

Lateral element - UM108-SE-A73 - 2959751

<https://www.phoenixcontact.com/us/products/2959751>

Side element, without foot, tall version, for 73 mm wide U-shaped cover.



Lateral element

Lateral element - UM108-SEFE/R-A60 - 2959706

<https://www.phoenixcontact.com/us/products/2959706>

Side element, with foot, tall version, right-hand, for 60 mm wide U-shaped cover.



Profile - UM -PROFIL



2952020

<https://www.phoenixcontact.com/us/products/2952020>

Lateral element

Lateral element - UM108-SEFE/L-A73 - 2959735

<https://www.phoenixcontact.com/us/products/2959735>

Side element, with foot, tall version, left-hand, for 73 mm wide U-shaped cover.



Lateral element

Lateral element - UM108-SE-A60 - 2959748

<https://www.phoenixcontact.com/us/products/2959748>

Side element, without foot, tall version, for 60 mm wide U-shaped cover.



Profile - UM -PROFIL



2952020

<https://www.phoenixcontact.com/us/products/2952020>

Lateral element

Lateral element - UM108-SEFE/R-A73 - 2959719

<https://www.phoenixcontact.com/us/products/2959719>

Side element, with foot, tall version, right-hand, for 73 mm wide U-shaped cover.



Lateral element

Lateral element - UM108-SE - 2959476

<https://www.phoenixcontact.com/us/products/2959476>

Side element, 5 mm wide, PCB width: 107.5 mm



Profile - UM -PROFIL



2952020

<https://www.phoenixcontact.com/us/products/2952020>

Lateral element

Lateral element - UM108 N-SE-A73 - 2709383

<https://www.phoenixcontact.com/us/products/2709383>

Side element, without foot, low-profile version, for 73 mm wide U-shaped cover.



Lateral element

Lateral element - UM108-SEFE/L-A60 - 2959722

<https://www.phoenixcontact.com/us/products/2959722>

Side element, with foot, tall version, left-hand, for 60 mm wide U-shaped cover.



Profile - UM -PROFIL



2952020

<https://www.phoenixcontact.com/us/products/2952020>

Lateral element

Lateral element - UM122-SEFE/R - 2908786

<https://www.phoenixcontact.com/us/products/2908786>

Side element, right, with foot, width: 5 mm wide, length: 122 mm, for mounting on DIN rail NS 32 or NS 35/7.5



Lateral element

Lateral element - UM122-SEFE/L - 2908773

<https://www.phoenixcontact.com/us/products/2908773>

Side element, left, with foot, width: 5 mm, length: 122 mm, for mounting on DIN rail NS 32 or NS 35/7.5



Profile - UM -PROFIL



2952020

<https://www.phoenixcontact.com/us/products/2952020>

Lateral element

Lateral element - UM122-SEMFE-A92 - 2909442

<https://www.phoenixcontact.com/us/products/2909442>

Lateral element, to attach profile cover UM 122 to DIN rail NS 35/7.5, with M3 screw fixture, tightening torque 0.25 Nm



Lateral element

Lateral element - UM108-SEPEF/L - 2906490

<https://www.phoenixcontact.com/us/products/2906490>

Press-drawn section housings, Lateral element (left), with snap-on foot and PE contact, color: green



Phoenix Contact 2022 © - all rights reserved
<https://www.phoenixcontact.com>

Phoenix Contact USA
586 Fulling Mill Road
Middletown, PA 17057, United States
(+717) 944-1300
info@phoenixcon.com