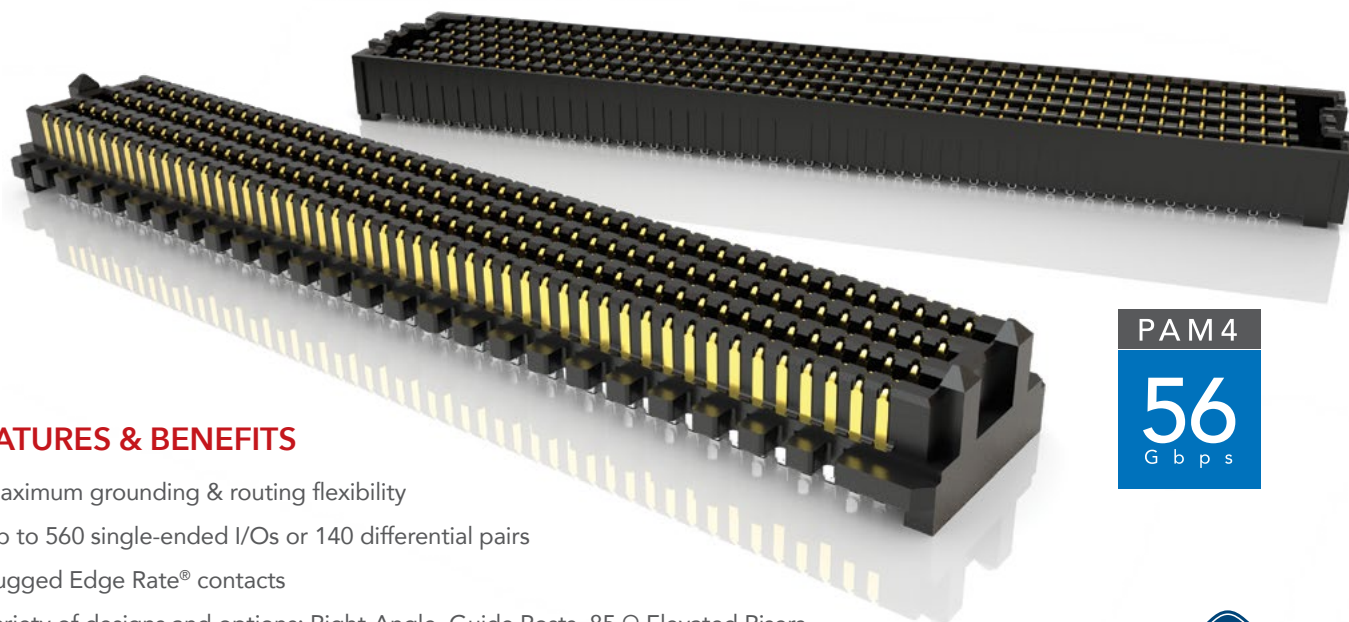




HIGH-DENSITY OPEN-PIN-FIELD ARRAYS

(1.27 mm) .050" PITCH

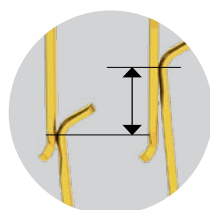


FEATURES & BENEFITS

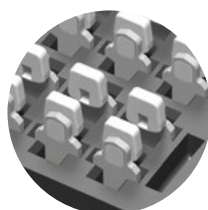
- Maximum grounding & routing flexibility
- Up to 560 single-ended I/Os or 140 differential pairs
- Rugged Edge Rate® contacts
- Variety of designs and options: Right-Angle, Guide Posts, 85 Ω Elevated Risers, 85 Ω Tuned, Press-Fit and Press-Fit Right-Angle, Guide Post Field Termination Kits
- Compatible with UMPT/UMPS for power/signal flexibility
- Cable mates (SEAC Series) and Jack Screw Standoffs (JSO Series) also available
- Standards: VITA 47, VITA 57.1 FMC, VITA 57.4 FMC+, VITA 74 VNX, PISMO™ 2
- Supports high-speed protocols such as Ethernet, PCI Express®, Fibre Channel & InfiniBand

PAM 4
56
G b p s

**EDGE
RATE**
CONTACT



(1.12 mm) .044"
Nominal Wipe

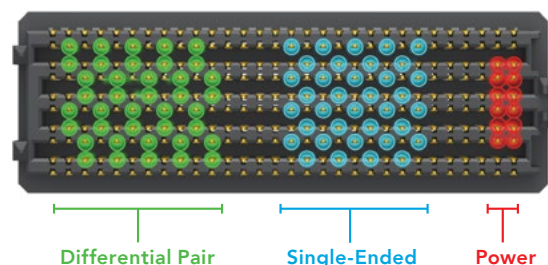


Solder Charges



Power / Signal
Applications

MAXIMUM GROUNDING & ROUTING FLEXIBILITY



KEY SPECIFICATIONS

| PITCH | STACK HEIGHTS | TOTAL PINS | INSULATOR MATERIAL | CONTACT MATERIAL | PLATING | OPERATING TEMP RANGE | CURRENT RATING | WORKING VOLTAGE | LEAD-FREE SOLDERABLE |
|-------------------|----------------|------------|--------------------|------------------|--|----------------------|---|-----------------|----------------------|
| 1.27 mm x 1.27 mm | 7 mm - 18.5 mm | 40 - 560 | Black LCP | Copper Alloy | Au or Sn over 50 μ " (1.27 μ m) Ni | -55 °C to +125 °C | 2.7 A per pin (10 adjacent pins powered) 7 mm stack height | 240 VAC | Yes |

Note: Some lengths, styles and options are non-standard, non-returnable

(1.27 mm) .050" PITCH • SEAM/SEAF SERIES

| SERIES | POSITIONS PER ROW | LEAD STYLE | PLATING OPTION | NO. OF ROWS | SOLDER TYPE | A | K | "X" R |
|-------------------------|--|--------------------------------------|--|--|---|---|--|-------|
| SEAM Terminal | -10, -15, -20, -30, -40, -50 | Specify LEAD STYLE from chart | -L = 10 μ" (0.25 μm) Gold on contact area, Matte Tin on solder tail | -04 -05 -06 -08 -10 | -1 = Tin/Lead Alloy Solder Charge -2 = Lead-Free Solder Charge | | | |
| SEAF Socket | SEAM & SEAF: -10 only available in -04 Row SEAM: -15 only available in -04 Row with -02.0 Lead Style, and -10 Row with any Lead Style; SEAF: -15 only available in -04 or -10 Row with -5.0 Lead Style | | -S = 30 μ" (0.76 μm) Gold on contact area, Matte Tin on solder tail | SEAM: -04, -05 & -06 (Rows not available with -06.5 Lead Style) | | | -A = Alignment Pin -K Polyimide Film Pick & Place Pad -TR = Tape & Reel -FR = Full Reel Tape & Reel (must order max. quantity per reel; contact Samtec for quantity breaks) | |

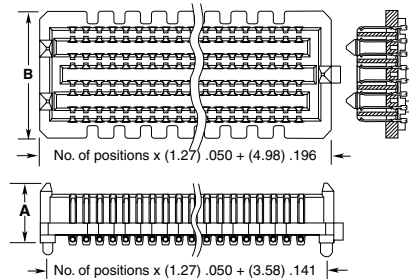
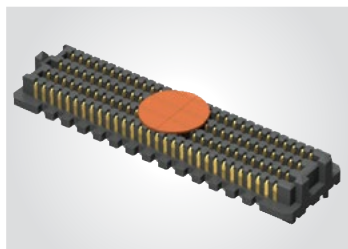
SEAM

Board Mates:

SEAF, SEAFP

Standoffs:

JSO



| LEAD STYLE | A | NO. OF ROWS | B |
|------------|--------------|-------------|--------------|
| -02.0 | (5.61) .221 | -04 | (7.06) .278 |
| -03.0 | (6.60) .260 | -05, -06 | (9.60) .378 |
| -03.5 | (7.11) .280 | -08 | (12.14) .478 |
| -06.5 | (10.16) .400 | -10 | (14.68) .578 |
| -07.0 | (10.59) .417 | | |
| -09.0 | (12.60) .496 | | |
| -11.0 | (14.61) .575 | | |

ALSO AVAILABLE

See website for 14 row option.

View complete specifications at: samtec.com?SEAM

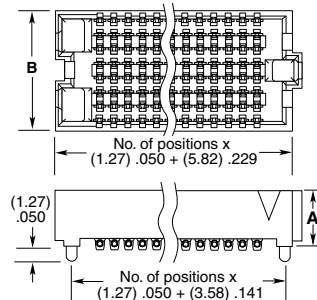
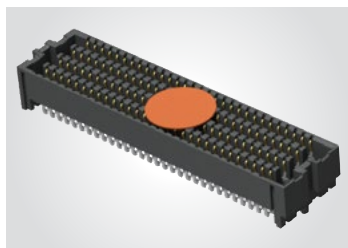
SEAF

Board Mates:

SEAM, SEAMP,
SEAR, SEAMI

Standoffs:

JSO



| LEAD STYLE | A | NO. OF ROWS | B |
|------------|-------------|-------------|--------------|
| -05.0 | (5.05) .199 | -04 | (5.66) .223 |
| -06.0 | (6.05) .238 | -05, -06 | (8.20) .323 |
| -06.5 | (6.55) .258 | -08 | (10.74) .423 |
| -07.5 | (7.54) .297 | -10 | (13.28) .523 |

View complete specifications at: samtec.com?SEAF

MATED HEIGHTS

| SEAM LEAD STYLE | SEAF LEAD STYLE | | | |
|-----------------|-----------------|---------|---------|---------|
| | -05.0 | -06.0 | -06.5 | -07.5 |
| -02.0 | 7 mm | 8 mm | 8.5 mm | 9.5 mm |
| -03.0 | 8 mm | 9 mm | 9.5 mm | 10.5 mm |
| -03.5 | 8.5 mm | 9.5 mm | 10 mm | 11 mm |
| -06.5 | 11.5 mm | 12.5 mm | 13 mm | 14 mm |
| -07.0 | 12 mm | 13 mm | 13.5 mm | 14.5 mm |
| -09.0 | 14 mm | 15 mm | 15.5 mm | 16.5 mm |
| -11.0 | 16 mm | 17 mm | 17.5 mm | 18.5 mm |

STANDARDS

VITA 47
VITA 57.1 FMC
VITA 57.4 FMC+
VITA 74 VNX
PISMO™2

Visit www.samtec.com/standards for more information.

Notes:
IPC-A-610F and
IPC J-STD-001F Class 3 solder joint.