

Standard

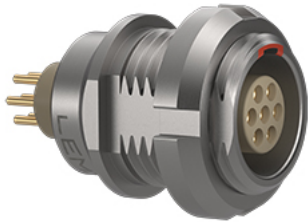


Image for illustrative purpose only

Summary

[Request a quote](#)

BKT series

| | |
|--------------------------------|--|
| Number of contacts Low Voltage | 20 |
| Gender | Standard |
| Socket / Receptacle | Socket / Receptacle - Fixed Panel Rear Mounted |
| Locking system | Push-pull |
| Panel Drill Hole | M18 |
| Size | 3B |
| Suggested matching part | FGA.3B.320.CLAD10Z |
| Series | B - Indoor keyed |

https://www.lemo.com/int_en/solutions/originals/b-indoor-keyed/eea-3b-320-cln.html

LEMO products and services are provided "as is". LEMO makes no warranties or representations with regard to LEMO product & services or use of them, express, implied or statutory, including for accuracy, completeness, or security. The user is fully responsible for his products and applications using LEMO components.

Technical details

Electrical Configuration

| | |
|---|--|
| Number of contacts Low Voltage | 20 |
| Contact Termination Low voltage | PCB - Straight |
| R (max) | 6.1 mOhm |
| Insert configuration value | 3B.320 - 20 Low Voltage |
| Footprint IPC Class3 compatibility | Yes |
| Class3 Productibility Level Compatibility | A (General Design Producibility - Preferred) |
| Insulator | L: PEEK (UL 94 / V-0/1.5) |
| Rated current | 6 A |
| Vtest (contact-contact) | 1.4 kV (DC) |
| Vtest (contact-shell) | 1.3 kV (DC) |
| Contact Dia. | 0.7 mm (0.028in) |
| Gender | Standard |

Form & Material

| | |
|------------------------|---|
| Shell style / Model id | EE - Fixed receptacle, nut fixing with straight contacts for printed circuit(back panel mounting) |
| Socket / Receptacle | Fixed Panel Rear Mounted |
| Housing material | Brass (chrome plated [SAE AMS 2460]) shell and collet nut, nickel plated [SAE AMS QQ N 290] brass latch sleeve and mid pieces |
| Locking system | Push-pull |
| Keying | A: 2 keys (alpha=30, plug: male contacts, receptacle: female contacts) |
| Colour | Grey |
| Weight | 25.82 g |
| Panel Drill Hole | M18 |

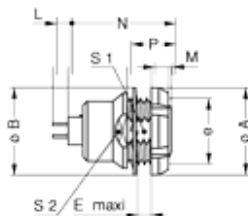
https://www.lemo.com/int_en/solutions/originals/b-indoor-keyed/eea-3b-320-cln.html

LEMO products and services are provided "as is". LEMO makes no warranties or representations with regard to LEMO product & services or use of them, express, implied or statutory, including for accuracy, completeness, or security. The user is fully responsible for his products and applications using LEMO components.

Environment

| | |
|-----------------------------------|--|
| Technical domain | Audio Video, Energy and Industrial, Medical, Semiconductor, Specialties and Other, Test and Measurement, Transportation, Aerospace and UAV |
| Environmental sealing (IP rating) | IP50 |
| Endurance | 5000 mating cycles |
| Temperature range | -55°C / +250°C (max. temperature valid for short periods of use.) |
| Climatic Category | 55/175/21 |
| Humidity (max) | <=95% [at 60 deg C /140 F] |
| Shielding (min) | 75 dB (10 MHz) |
| Shielding (min) | 40 dB (1 GHz) |
| Shock Resistance | 100 g [6 ms] |
| Vibration | 15 g [10 Hz - 2000 Hz] |
| Salt Spray Corrosion | >1000 hr |

Drawings



Dimensions

| | S1 | S2 | E | P | L | M | N | e | A | B |
|-----|------|------|------|------|------|------|------|---------|------|------|
| mm. | 16.5 | 20 | 6.1 | 12 | 30.7 | 4.5 | 28.1 | M18x1.0 | 24 | 25 |
| in. | 0.65 | 0.79 | 0.24 | 0.47 | 1.21 | 0.18 | 1.11 | | 0.94 | 0.98 |

https://www.lemo.com/int_en/solutions/originals/b-indoor-keyed/eea-3b-320-cln.html

LEMO products and services are provided "as is". LEMO makes no warranties or representations with regard to LEMO product & services or use of them, express, implied or statutory, including for accuracy, completeness, or security. The user is fully responsible for his products and applications using LEMO components.

Recommended By Lemo

Caps

Compatible cap [BRE.3S.200.NAS](#)

Cap 2 [BRE.3S.200.NAV](#)

Plastic Cap [BRA.3B.200.PCSG](#)

Soft Cap [BEZ.3B.200.SCN](#)

Tools

Spanner 2 [DCM.65.200.AZ](#)

Spanner wrench [Socket for torque wrench DCM.65.200.AZ](#)

CAD

Documents

PCB [Download](#)

PCB Eagle [Download](#)

https://www.lemo.com/int_en/solutions/originals/b-indoor-keyed/eea-3b-320-cln.html

LEMO products and services are provided "as is". LEMO makes no warranties or representations with regard to LEMO product & services or use of them, express, implied or statutory, including for accuracy, completeness, or security. The user is fully responsible for his products and applications using LEMO components.