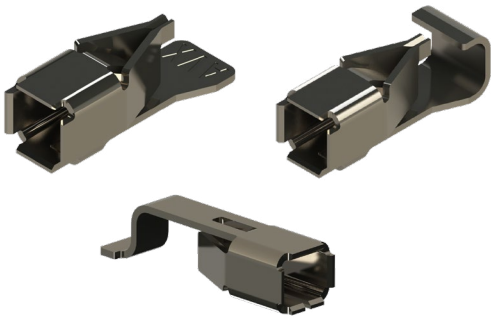


POKE-HOME - SINGLE HORIZONTAL CONTACT

12-28 AWG: 9296-000



General Information



Widespread market adoption of KYOCERA AVX STRIPT™ contact systems continues to drive new product development. The 70-9296 series of dual-beam, boxed contacts provide a simple yet reliable wire-to-board alternative to full-size 1 and 2-position connector solutions. Contacts are surface mounted to the PCB, then either solid or stranded wires can be stripped to length and inserted into the contact. Contacts are designed with dual beam high force contacts to maximize wire retention. Integrated wire guides and stops ensure proper wire positioning.

In this round of product expansion, the 2.5mm has been added to offer a new size when trying to maximize AWG and keep the smallest profile contact available in size critical applications. In addition, this contact has been designed without a wire stop to facilitate solid pin insertion for board-to-board and module-to-module applications (see BTB jumper data sheet for 109296001xxx906).

APPLICATIONS

- Industrial/Ruggedized Wire-to-Board applications
- Replace hard soldering of wire to a PCB
- Product Specification: Refer to 201-01-143
- Application Notes: Refer to 201-01-150
- Linear Board-to-Board capabilities with 10-9296 Series Jumpers

FEATURES AND BENEFITS

- Dual Beam box contact provides maximum mechanical stability and wire retention
- Tape and reel packaged for automated SMT placement
- Staged current rating based on AWG, maximum is 10A (12 AWG)
- 2.0 and 2.5mm contact w/o wire stop allows for variable PCB mating tolerances in linear BTB applications

ELECTRICAL

- Current Rating: See Matrix Below
- Voltage Rating: 300 VAC (RMS) or DC Equivalent (Based on placement distance)

ENVIRONMENTAL

- Operating Temperature: -40°C to +125°C
- Storage Temperature: -40°C to +70°C

MECHANICAL

- Contact Material: Phosphor Bronze
- Contact Plating: Pure Tin
- Durability 5 Cycles

HOW TO ORDER

70 Prefix
70 = Contact

9296 Series

001 Number of Ways
001 = 1

OXX Wire Gauge Size

OX6 Plating & Other Options

Code	Contact Size	Wire Gauge	Max Insulation	Wire Stop Available
017	1.7mm	22-26 AWG Solid or Stranded	1.3mm Ø	Yes
002	2mm	22-28 AWG Solid or Stranded	1.5mm Ø	Yes
025	2.5mm	18-26 AWG Solid or Stranded	Max 2mm Ø	Yes
003	3mm	18-26 AWG Solid or Stranded	2.5mm Ø	Yes
004	4mm	12-20 AWG Solid or Stranded	3.4mm Ø	Yes

Code	Wire Stop Variations	Plating
006	With wire stop	Pure tin all over
016*	Without wire stop	

*Only available for 2mm, 2.5mm, and 3mm



SALES DRAWINGS
CLICK TO DOWNLOAD

CURRENT RATING

Size	Part Number	12 AWG	14 AWG	16 AWG	18 AWG	20 AWG	22 AWG	24 AWG	26 AWG	28 AWG
4mm	709296001004006	20A	16A	14A	12A	10A				
3mm	7092960010030X6				15A	14A	10A	9A	6.5A	
2.5mm	7092960010250X6				14A	12A	11A	9A	7A	
2mm	7092960010020X6						11A	9A	6.5A	6A
1.7mm	709296001017006						11A	9A	6.5A	6A

Safety Standards: UL 1977-File #E90723, CSA C22.2 NO. 182.3