

Han 24Ex-F-c

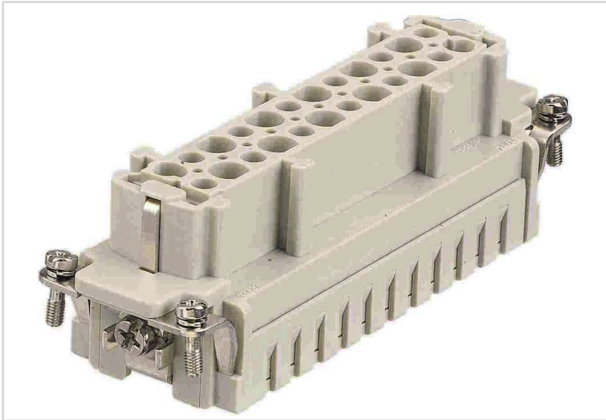


Image is for illustration purposes only. Please refer to product description.

Part number	09 36 024 2702
Specification	Han 24Ex-F-c
HARTING eCatalogue	https://harting.com/09360242702

Identification

Category	Inserts
Series	Han® Ex

Version

Termination method	Crimp termination
Gender	Female
Size	24 B
Number of contacts	24
PE contact	Yes
Details	Simple Apparatus for intrinsically safe circuits Please order crimp contacts separately.
Details	ATTENTION! Only to be used with Han® Ex hoods and housings!

Technical characteristics

Conductor cross-section	0.14 ... 4 mm ²
Rated current	10 A
Insulation resistance	>10 ¹⁰ Ω
Tightening torque	1.2 Nm PE screw M4
Recommended screw driver	Slotted 0.8 x 4.5 PH2
Limiting temperature	-20 ... +40 °C
Note on the limiting temperature	Up to +70 °C in T4



Pushing Performance
Since 1945

Technical characteristics

Mating cycles ≥ 500

Material properties

Material (insert)	Polycarbonate (PC)
Colour (insert)	RAL 7032 (pebble grey)
Material flammability class acc. to UL 94	V-0
RoHS	compliant
ELV status	compliant
China RoHS	e
REACH Annex XVII substances	Not contained
REACH ANNEX XIV substances	Not contained
REACH SVHC substances	Not contained
California Proposition 65 substances	Yes
California Proposition 65 substances	Lead Nickel
Fire protection on railway vehicles	EN 45545-2 (2020-08) + A1 (2023-10)
Requirement set with Hazard Levels	R22 (HL 1-3) R23 (HL 1-3)

Commercial data

Packaging size	1
Net weight	79.9 g
Country of origin	Germany
European customs tariff number	85366990
GTIN	5713140055001
eCl@ss	27440205 Contact insert for industrial connectors
ETIM	EC000438
UNSPSC 24.0	39121522