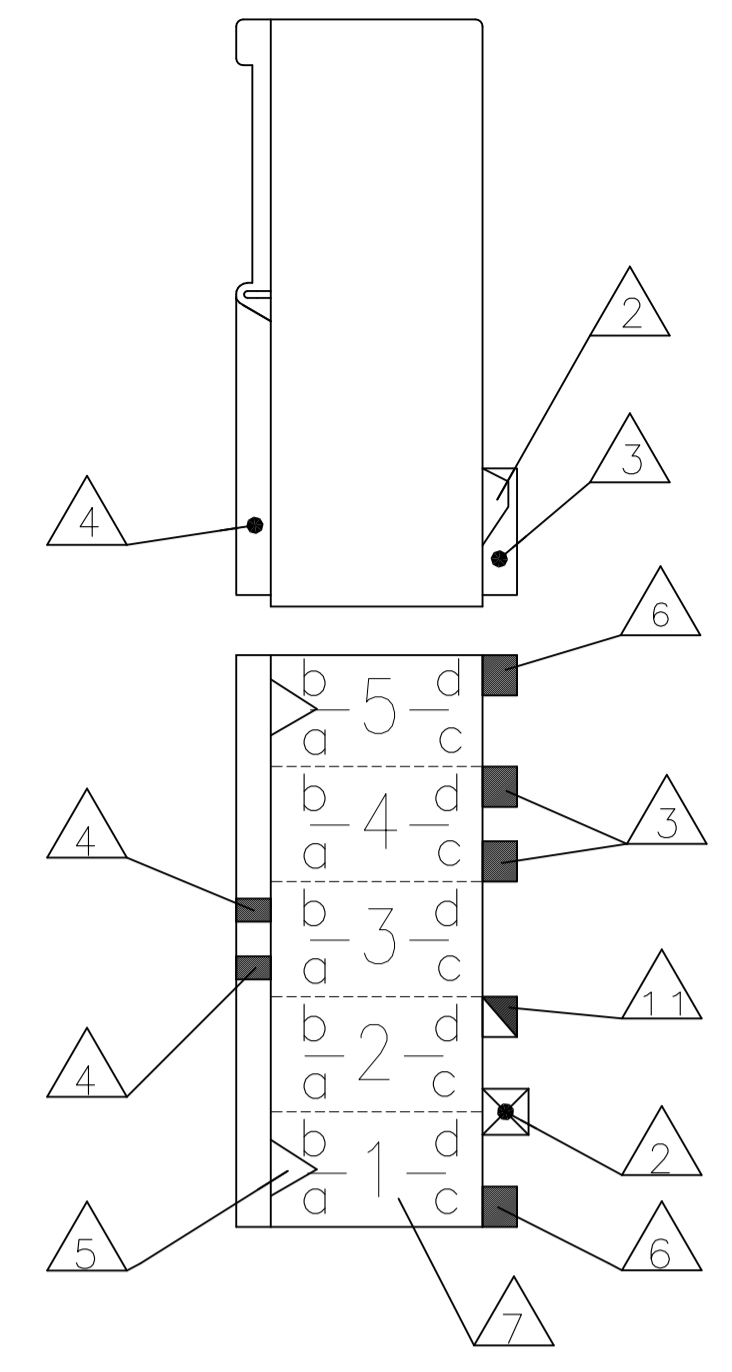
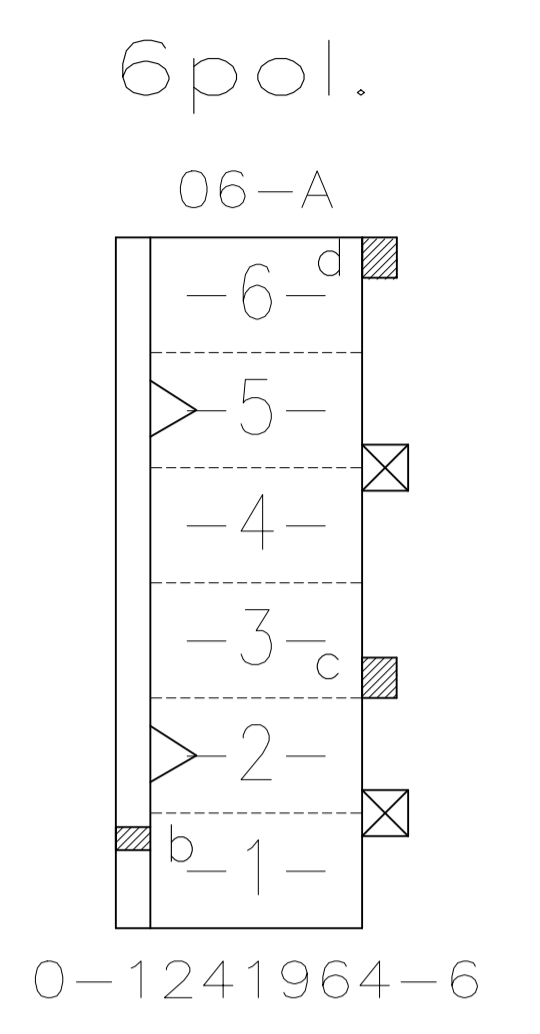
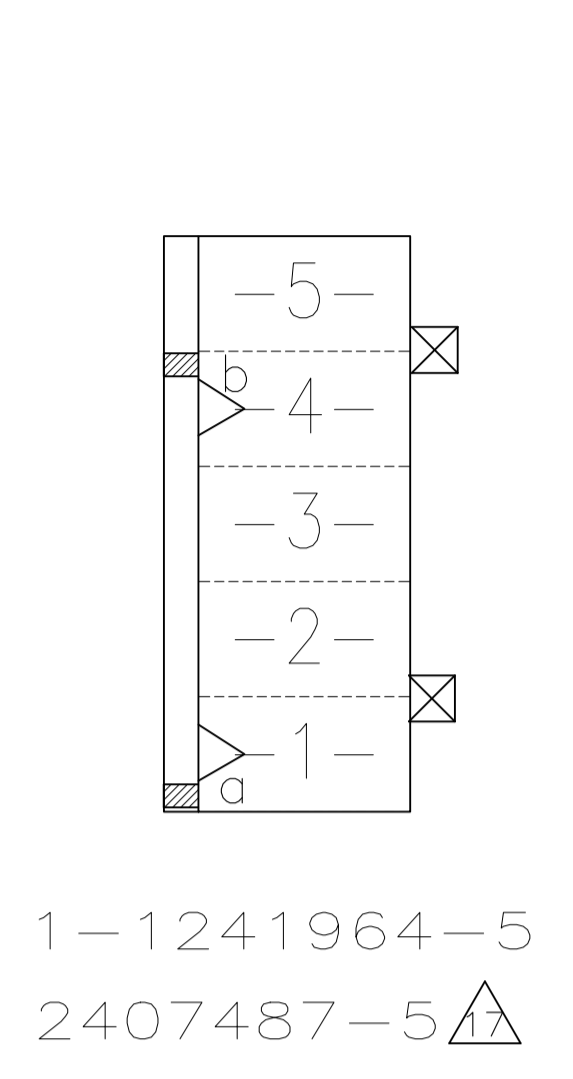
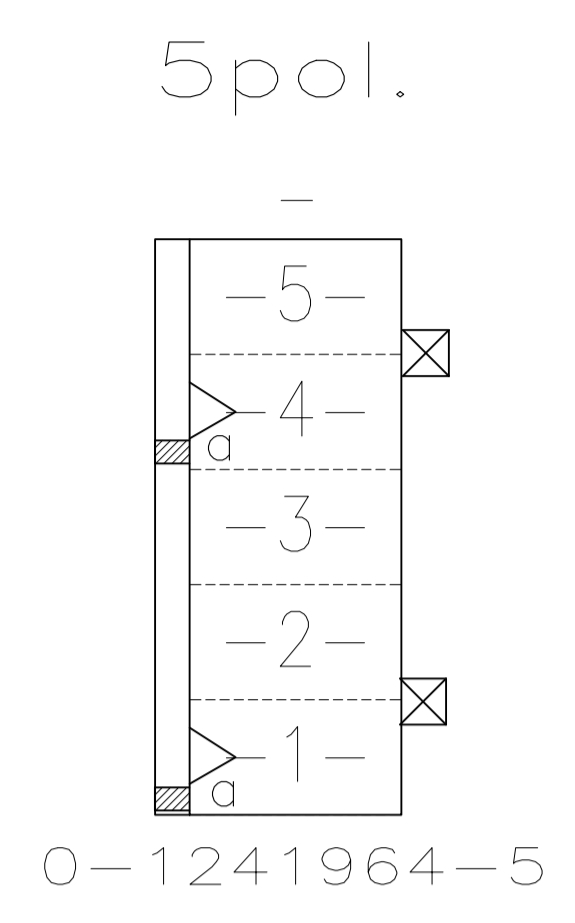
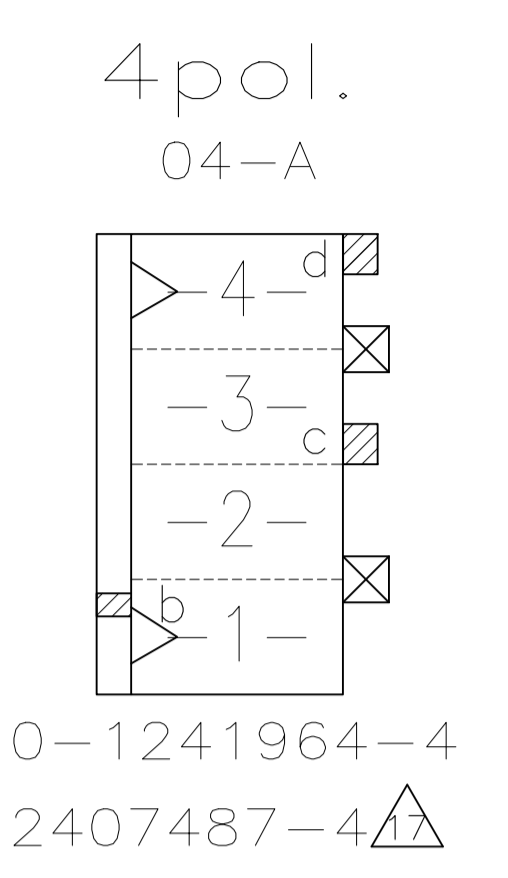
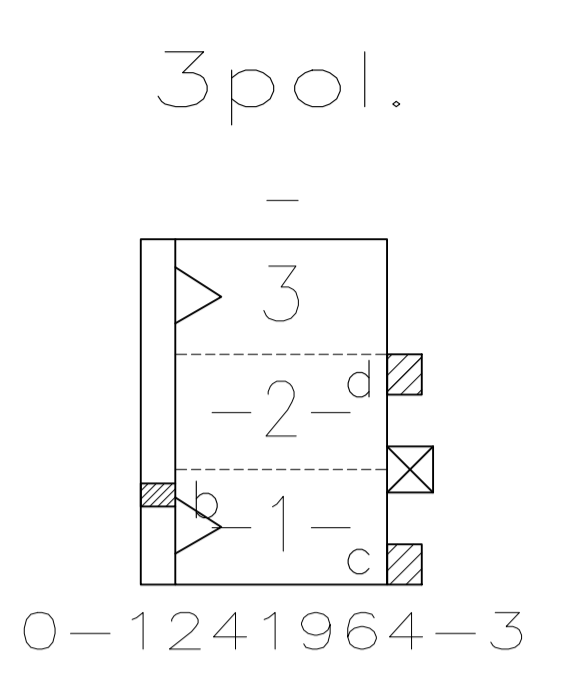
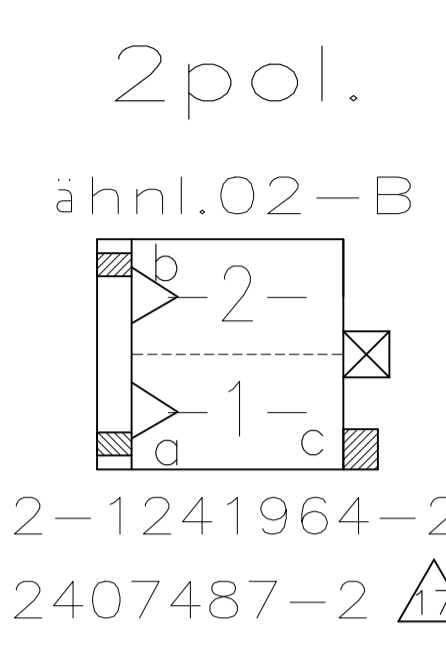




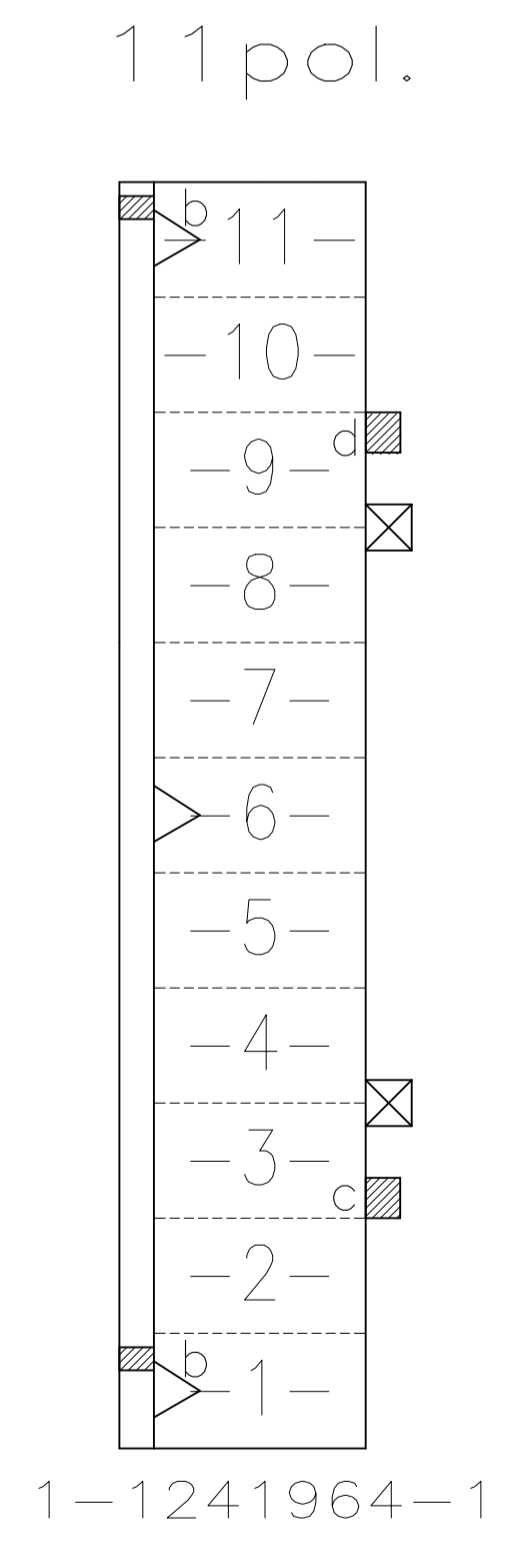
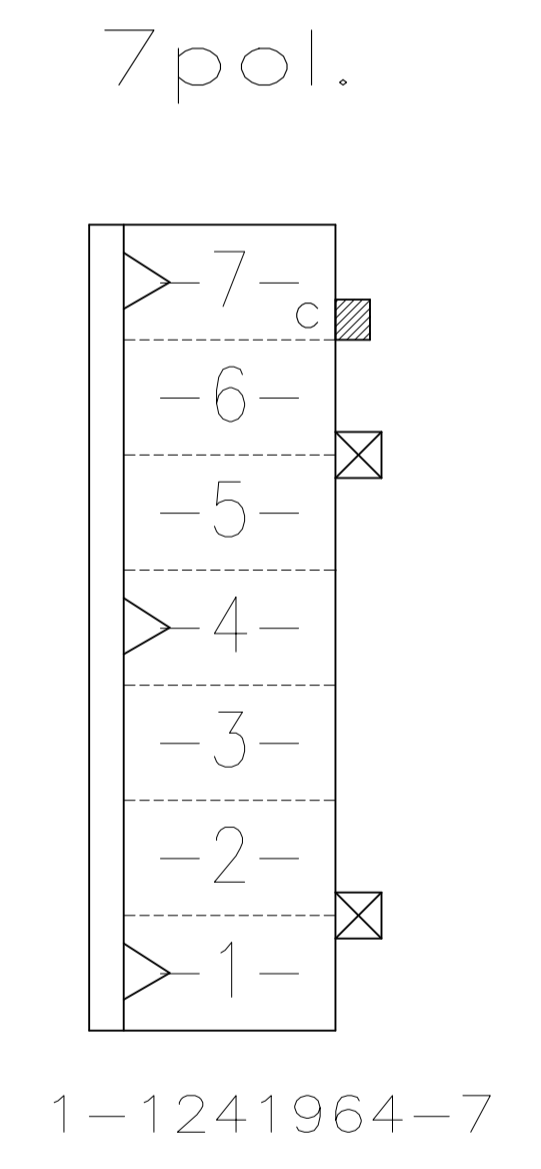
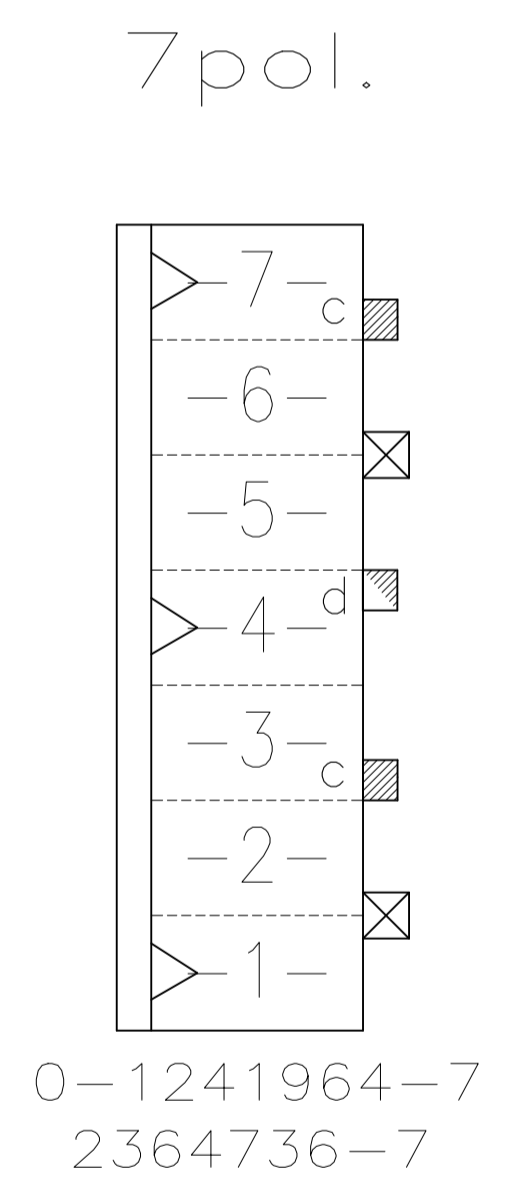
REVISIONS					
NO.	DATE	DESCRIPTION	BY	CHK	APPV
-	-	SEE SHEET 1	-	-	-



**Darstellung:**  
Lage der Kodier- und Polarisierungsrippen und Rastfedern am Gehäuse

**DESCRIPTION:**  
POSITION OF KEYING RIB AND THE LOCKING LATCH AT THE HOUSINGS

TE PART NUMBER (OPTIONAL)



TE PART NO.	POS.	DIM A	DIM B	COLOUR	MATERIAL	MATED WITH	
2407487-5	5	25	20	NATURE/natur	PA66 UL94-V0 & GWEPT 750°C n.f.		
2407487-4	4	20	15	NATURE/natur	PA66 UL94-V0 & GWEPT 750°C n.f.		
2407487-2	2	10	5	NATURE/natur	PA66 UL94-V0 & GWEPT 750°C n.f.		
2364736-7	7	35	30	BLUE	PA66 UL94-V0 & GWEPT 750°C n.f.		
1-1241964-1	11	55	50	NATURE/natur	PA66 UL94V-2		
1-1241964-7	7	35	30	NATURE/natur			
0-1241964-7	7	35	30	NATURE/natur			
0-1241964-6	6	30	25	NATURE/natur			
1-1241964-5	5	25	20	NATURE/natur			
0-1241964-5	5	25	20	NATURE/natur			
0-1241964-4	4	20	15	NATURE/natur			
0-1241964-3	3	15	10	NATURE/natur			
2-1241964-2	2	10	5	NATURE/natur			
Bestell-Nr.	Pol-zahl	Maß A	Maß B	Farbe		Material	Gegenstecker
PART NO.	POS.	DIM A	DIM B	COLOUR		MATERIAL	MATED WITH

THIS DRAWING IS A CONTROLLED DOCUMENT.

DATE: 26-NOV-02  
 CHK: Mähne, B  
 DATE: 29-NOV-02  
 CHK: Stredak, F  
 DATE: 30-NOV-02  
 NAME: Bleicher, B

APPROVED: 108-18049-1

APPLICATION SPEC: -

SIZE: A1  
 CAGE CODE: 00779  
 DRAWING NO: 1241964

WEIGHT: 0

CUSTOMER DRAWING

SCALE: 5:1  
 SHEET: 2 OF 2  
 REV: A18

STE TE Connectivity Ltd.

2-11 POS. STANDARD-TIMER HOUSING WITH INTERIOR LOCKING, PITCH 5mm