



Part Number : [39039062](#)

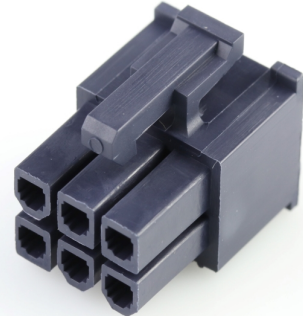
Product Description : Mini-Fit Jr. Receptacle Housing, Dual Row, 6 Circuits, UL 94V-0, Black

Series Number : 5557

Status : Active

Product Category : Connector Housings

Engineering Number : 5557-06R-400



---

## Documents & Resources

### Drawings

[Drawing 039039062\\_sd.pdf](#)

[Packaging Design Drawing PK-5557-002-000.pdf](#)

### 3D Models and Design Files

[3D Model 039039062\\_stp.zip](#)

### Specifications

[Application Specification 55560001-AS-000.pdf](#)

[Product Specification PS-45750-001-001.pdf](#)

[Product Specification 55560002-PS-CH-000.pdf](#)

[Product Specification 55560002-PS-ES-000.pdf](#)

[Product Specification 55560002-PS-SK-000.pdf](#)

[Product Specification PS-5556-001-001.pdf](#)

[Product Specification PS-5556-002-001.pdf](#)

[Test Summary 55560010-TS-000.pdf](#)

---

## Product Environment Compliance

### Compliance

|                    |  |
|--------------------|--|
| GADSL/IMDS         | Not Relevant                                   |
| China RoHS         |  |
| EU ELV             | Not Relevant                                   |
| Low-Halogen Status | Low-Halogen per IEC 61249-2-21                 |
| REACH SVHC         | Not Contained per D(2023)3788-DC (14 Jun 2023) |

|         |                           |
|---------|---------------------------|
| EU RoHS | Compliant per EU 2015/863 |
|---------|---------------------------|

### Multiple Part Product Compliance Statements

- Eu RoHS
- REACH SVHC
- Low-Halogen

### Multiple Part Industry Compliance Documents

- IPC 1752A Class C
- IPC 1752A Class D
- Molex Product Compliance Declaration
- IEC-62474
- chemSHERPA (xml)

### EU RoHS Certificate of Compliance

---

## Part Details

### General

|                |  |
|----------------|--|
| Status         | Active   |
| Category       | Connector Housings   |
| Series         | 5557   |
| Description    | Mini-Fit Jr. Receptacle Housing, Dual Row, 6 Circuits, UL 94V-0, Black   |
| Application    | Power, Wire-to-Board, Wire-to-Wire   |
| Comments       | Current = 13A max. per circuit when header is mated to a receptacle loaded with 45750 series terminals crimped to 16 AWG wire. See Molex product specification PS-45750-001 for additional current derating information. |
| Product Family | Mini-Fit Family Power Connectors   |
| Product Name   | Mini-Fit Jr.   |
| UPC            | 800754812399   |

### Agency

|     |         |
|-----|---------|
| CSA | LR19980 |
| UL  | E29179  |

### Physical

|                               |                |
|-------------------------------|----------------|
| Breakaway                     | No             |
| Circuits (maximum)            | 6              |
| Color - Resin                 | Black          |
| Flammability                  | 94V-0          |
| Gender                        | Receptacle     |
| Glow-Wire Capable             | No             |
| Material - Resin              | Nylon          |
| Net Weight                    | 1.405/g        |
| Number of Rows                | 2              |
| Packaging Type                | Bag            |
| Panel Mount                   | No             |
| Pitch - Mating Interface      | 4.20mm         |
| Pitch - Termination Interface | 4.20mm         |
| Polarized to Mating Part      | Yes            |
| Stackable                     | No             |
| Temperature Range - Operating | -40° to +105°C |

### Solder Process Data

|                              |     |
|------------------------------|-----|
| Lead-Free Process Capability | N/A |
|------------------------------|-----|

---

### Mates With / Use With

#### Mates with Part(s)

| Description                               | Part Number  |
|---|--------------|
| Mini-Fit BMI Right-Angle Dual Row Headers | <u>42404</u> |
| Mini-Fit BMI Vertical Dual Row Headers    | <u>42440</u> |
| Mini-Fit BMI Right-Angle Dual Row Headers | <u>43810</u> |
| Mini-Fit BMI Vertical Dual Row Headers    | <u>44068</u> |
| Mini-Fit Jr. Dual Row Test Plugs          | <u>44281</u> |
| Mini-Fit Jr. Plug Housings                | <u>5559</u>  |
| Mini-Fit Jr. Vertical Headers             | <u>5566</u>  |
| Mini-Fit Jr. Right-Angle Headers          | <u>5569</u>  |

|                               |              |
|-------------------------------|--------------|
| Mini-Fit Jr. Dual Row Headers | <u>87427</u> |
|-------------------------------|--------------|

**Use with Part(s)**

| Description   | Part Number  |
|---|--|
| Pre-Crimped Lead Mini-Fit Female-to-Mini-Fit Female, Tin (Sn) Plating, 150.00mm Length, 18 AWG, Red | <u><a href="/content/molex/molex-dot-com/us/en/products/product-page.html/797580001.html">/content/molex/molex-dot-com/us/en/products/product-page.html/797580001.html</a></u> |
| Pre-Crimped Lead Mini-Fit Female-to-Mini-Fit Female, Tin (Sn) Plating, 300.00mm Length, 18 AWG, Red | <u><a href="/content/molex/molex-dot-com/us/en/products/product-page.html/797580009.html">/content/molex/molex-dot-com/us/en/products/product-page.html/797580009.html</a></u> |
| Mini-Fit Female Crimp Terminals   | <u>5556</u>  |
| Mini-Fit Plus Female Crimp Terminals  | <u>45750</u>   |
| Mini-Fit Jr. Hermaphroditic Backshells  | <u>204723</u>  |

---

This document was generated on Nov 29, 2023