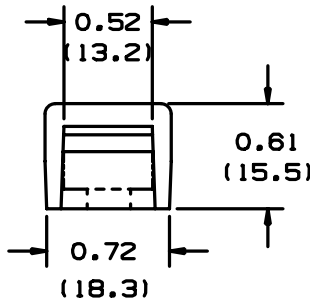
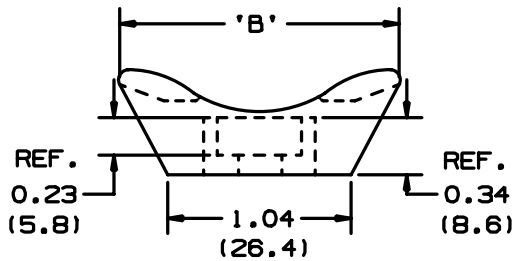
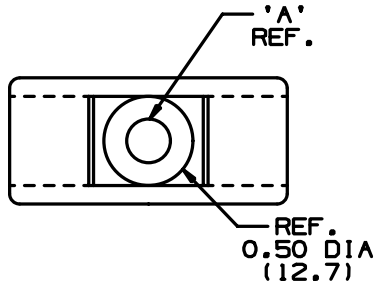


THIS COPY IS PROVIDED ON A RESTRICTED BASIS AND IS NOT TO BE USED IN ANY WAY DETRIMENTAL TO THE INTERESTS OF PANDUIT CORP.



PANDUIT PART NUMBER*	*MATERIAL SUFFIX	'A' DIA.	'B'	MTG. SCREW	WEIGHT lbs/100 pcs (g)/100 pcs	USE WITH ANY OF THESE CABLE TIES
TMEH-S8	-0	0.18 (4.8)	1.62 (41.1)	#8 (M4)	1.04 (471.4)	I,S,H,EH
TMEH-S10	-0	0.20 (5.1)	1.65 (41.9)	#10 (M5)	1.03 (467.4)	I,S,H,EH
	-100 -109					
TMEH-S25	-0	0.26 (6.6)	1.62 (41.1)	1/4" (M6)	1.01 (458.0)	I,S,H,EH

*MATERIAL SUFFIX	MATERIAL
-0	WEATHER RESISTANT NYLON
-100	WEATHER RESISTANT POLYPROPYLENE
-109	POLYPROPYLENE

NOTES:

- SEE CURRENT PRICE SHEET FOR PART NUMBER SUFFIX DESIGNATION FOR PACKAGE SIZE.
- CABLE TIE CROSS SECTION CODE:
I=INTERMEDIATE,S=STANDARD
H=HEAVY DUTY,EH=EXTRA HEAVY.

DIMENSIONS IN BRACKETS ARE METRIC [mm]

CAD FILENAME/LAYERS G00239EL_PB_TMEH_02



CORP. TINLEY PARK, ILLINOIS

TMEH-XX
TIE MOUNT

REV	DATE	BY	CHK	DESCRIPTION	ECN	R	CUST	SUP	DRAWN BY	DATE	MAT'L	SCALE	DWG NO.	DWG SIZE
2	10/28/03	MSAD		ADDED SEPERATE TMEH-S10 ROW FOR -100 AND -109 PARTS, 0.50 (12.7) DIA WAS .52 (13.2), 'B' WAS 1.65 (41.9) FOR -0 PARTS, 0.72 (18.3) WAS .74 (18.8) 1.04 (26.4) WAS 1.05 (26.7)	G80239EL	2								
1	7/24/01	LGG		ADDED REF & UPDATED	G80239EL	1			AJV			NONE		
R	12/13/98	AJV		INITIAL RELEASE	G80239EL	R				12/13/98	SEE TABLE		GB0239EL	A

UNLESS OTHERWISE SPECIFIED, DIMENSIONAL TOLERANCES ARE:
(.X) ±0.05 (1.3) (.XXX) ±0.010 (0.25)
(.XX) ±0.02 (0.5) ANGLES ± 5°

UNLESS OTHERWISE SPECIFIED, ALL DIMENSIONS ARE GIVEN IN INCHES, THIRD ANGLE PROJECTION.

DRAWN BY
DATE
CHK'D

MAT'L
SEE TABLE

SCALE
DRAWING NO.
Dwg
SIZE

Mouser Electronics

Authorized Distributor

Click to View Pricing, Inventory, Delivery & Lifecycle Information:

Panduit:

[TMEH-S10-C0](#) [TMEH-S8-Q0](#) [TMEH-S10-Q0](#) [TMEH-S25-Q0](#) [TMEH-S8-C0](#) [TMEH-S25-X0](#) [TMEH-S10-X0](#) [TMEH-S8-X0](#)