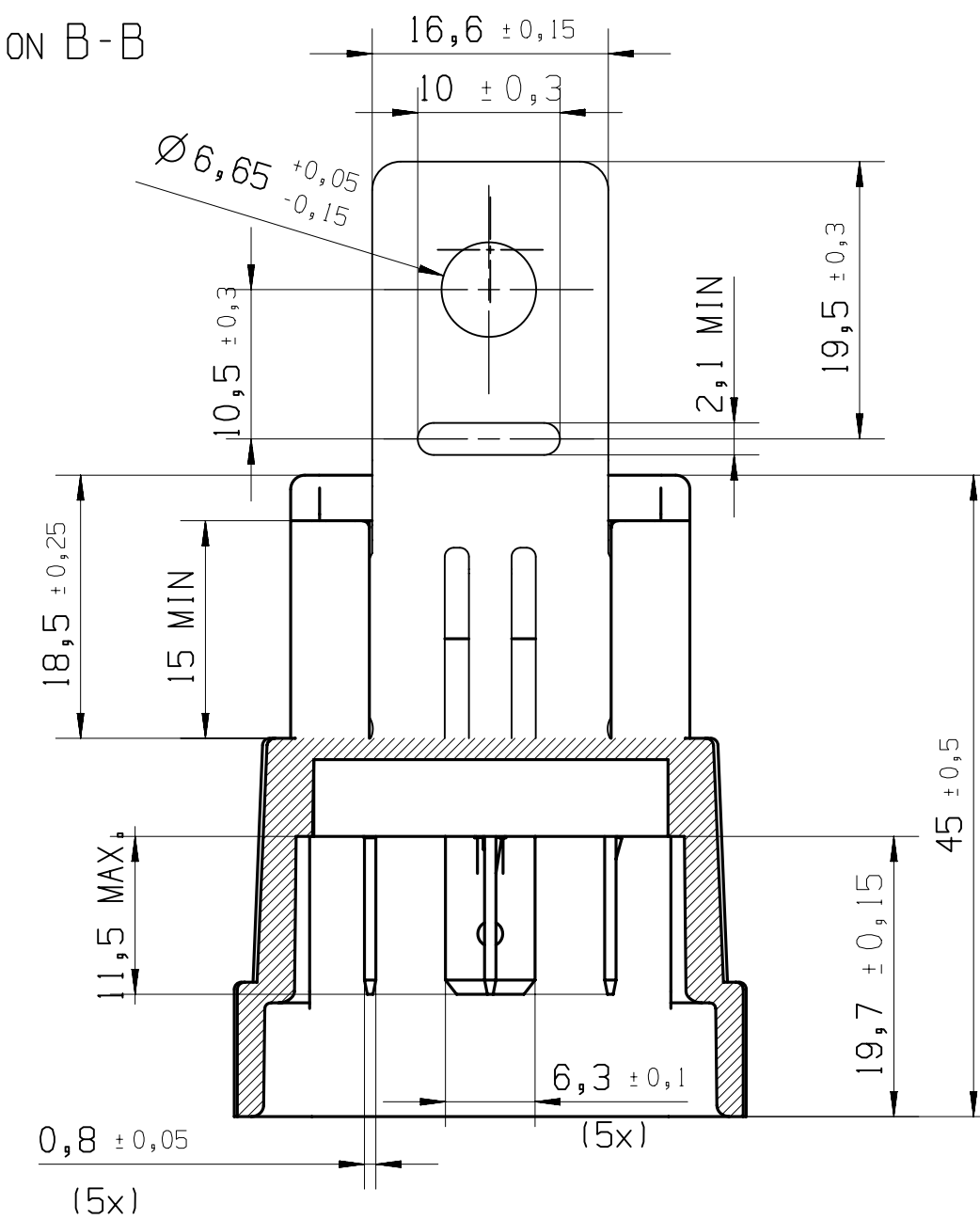


Part Names
VF4-65F11-S01 0202202C
V23134-A4052-X544
Country of Origin
Schematic Diagram
12VDC 40/30A
Current Rating
Nominal Voltage

SECTION B-B



* TERMINAL LOCATIONS APPLY AT THE BASE OF THE TERMINAL

MARKING LASER MARKED OR INK PRINTED OR INJECTION MOLDED TO INCLUDE:
MANUFACTURER'S NAME, MANUFACTURER'S PART NUMBER,
SCHEMATIC, COIL VOLTAGE, CONTACT RATING, COUNTRY OF
ORIGIN AND DATE CODE

TE P/N	PART NAME
3-1904131-5	V23134-A4052-X544

PROPRIETARY THE REPRODUCTION, TRANSMISSION OR USE OF THIS DOCUMENT OR IT'S CONTENTS IS NOT PERMITTED WITHOUT EXPRESSED WRITTEN AUTHORITY. OFFENDERS WILL BE LIABLE FOR ALL DAMAGES. ALL RIGHTS, INCLUDING RIGHTS CREATED BY REGISTERED PATENT(S) GRANTED FOR A UTILITY MODEL OR DESIGN, ARE RESERVED.				CHANGES TO THIS DRAWING MUST BE DONE ONLY IN CAD	PAPER SIZE A2
APPLICABLE SPEC.:				FINISH	
Replacement for VF4-65F11-S01				DIMENSIONS APPLY SCALE 2:1	PLATING WEIGHT
TOLERANCE UNLESS SPECIFIED OTHERWISE				MATERIAL	
DWN. 11NOV2016 L.Sandoval				PART NAME	
APP. ---				POWER F RELAY CHANGE OVER	
REV. CHANGE ORDER				DWG NO.	
DATE				C - V23134-A4052-X544	
APP.				CUSTOMER DRAWING	
ECO-19-010387				SHT. 1 OF 1	
Initial Release					

11NOV2016					
L.Sandoval					
PE EVORA					

Mouser Electronics

Authorized Distributor

Click to View Pricing, Inventory, Delivery & Lifecycle Information:

[TE Connectivity:](#)

[3-1904131-5](#)