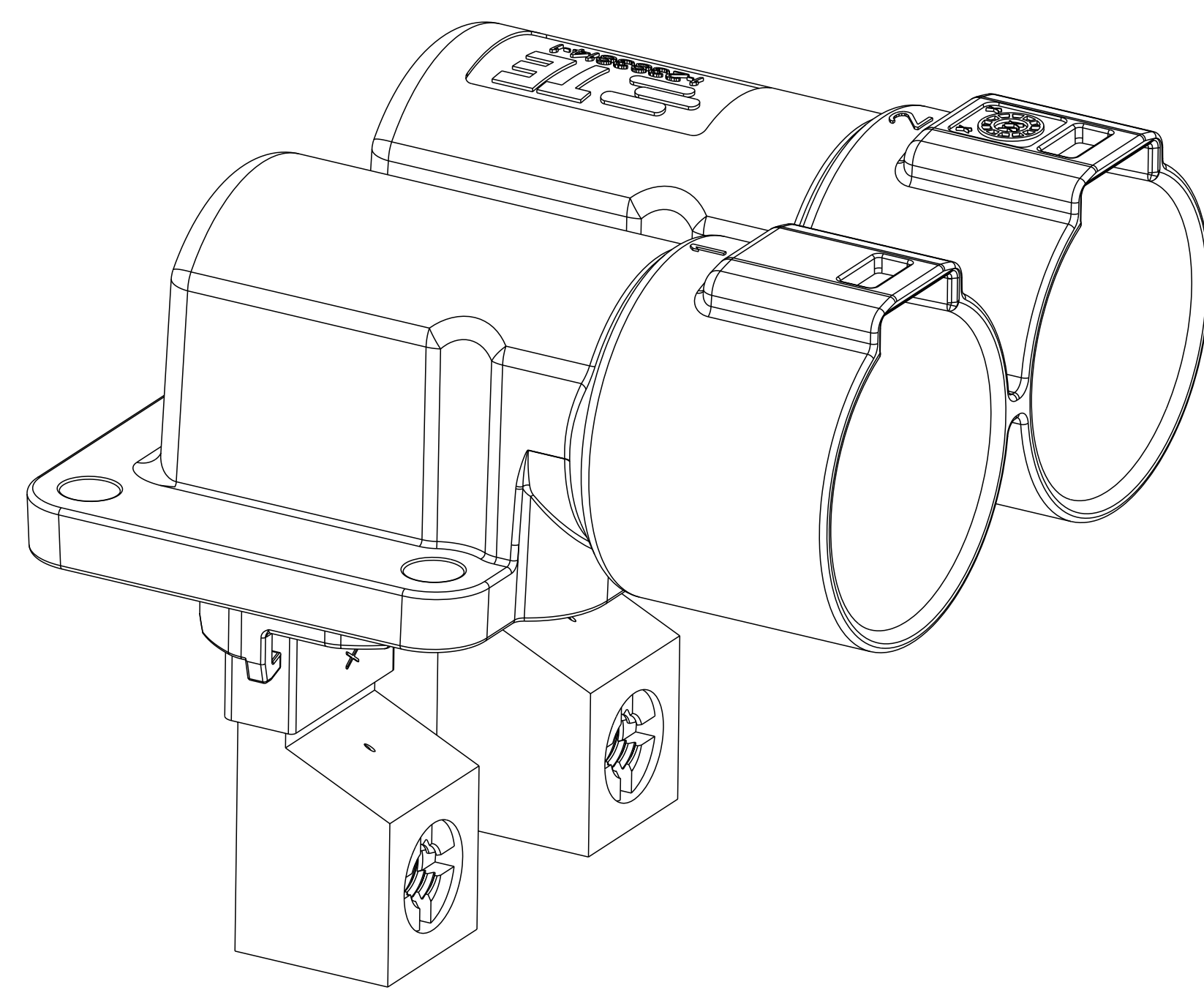
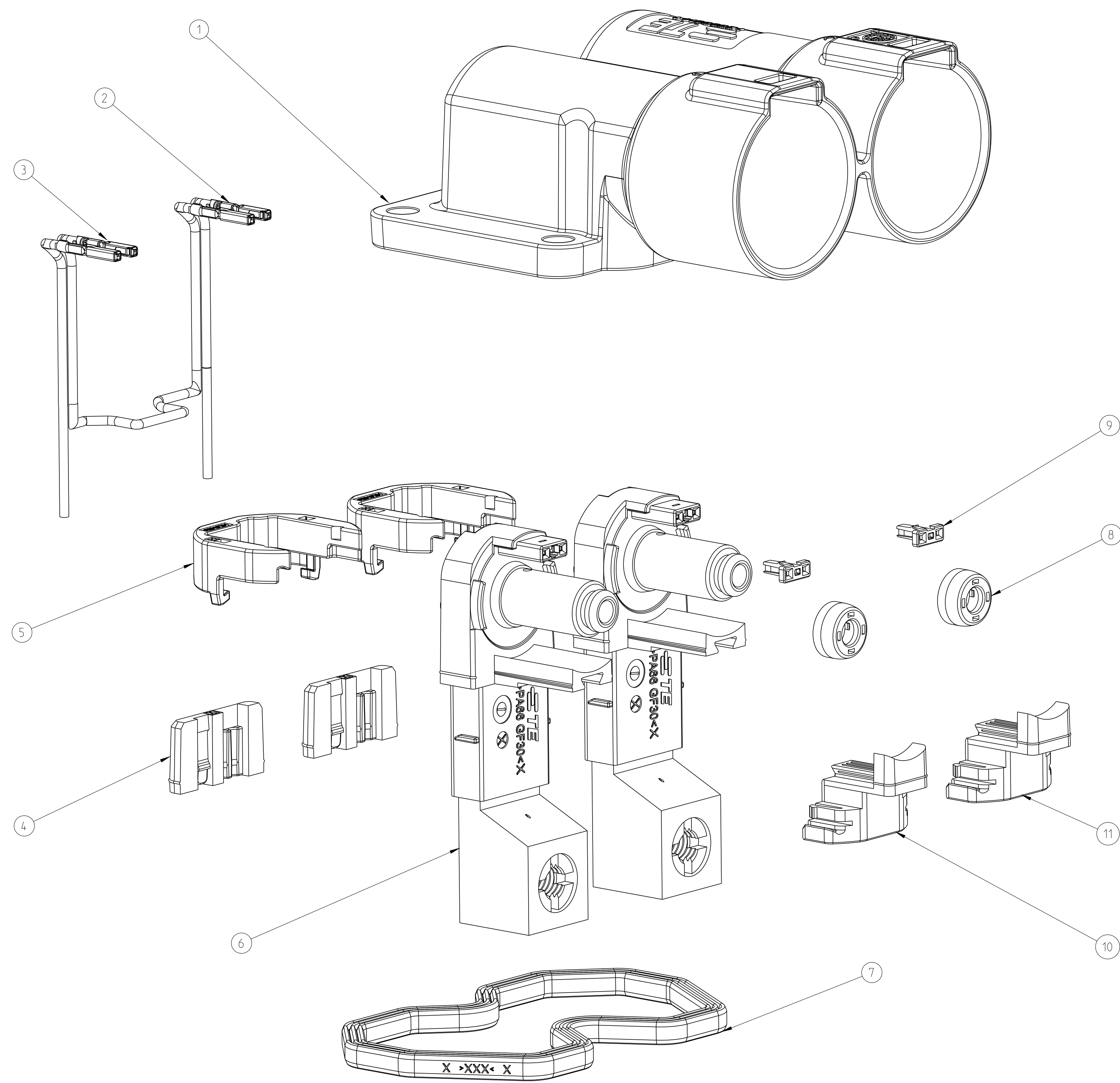
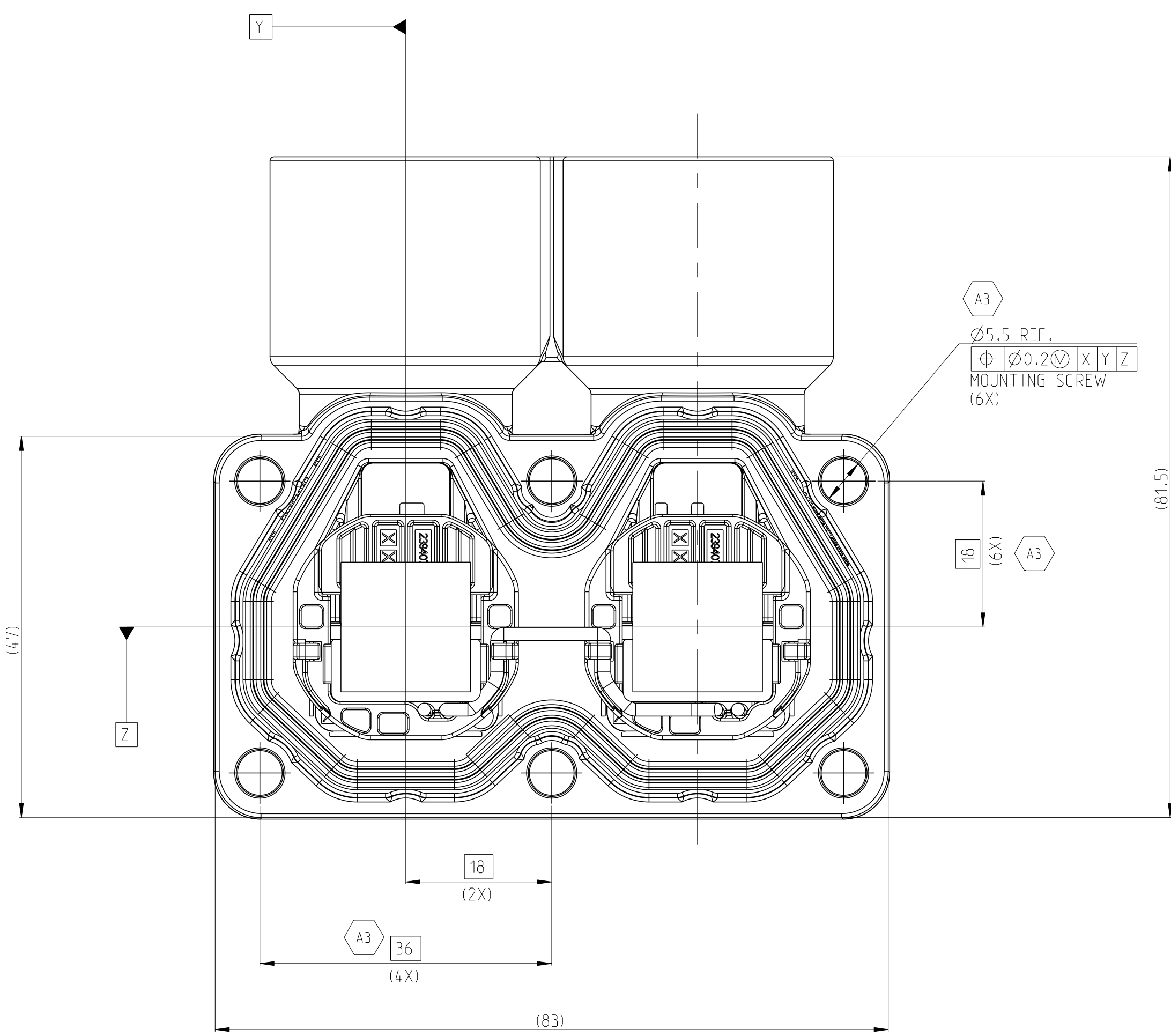
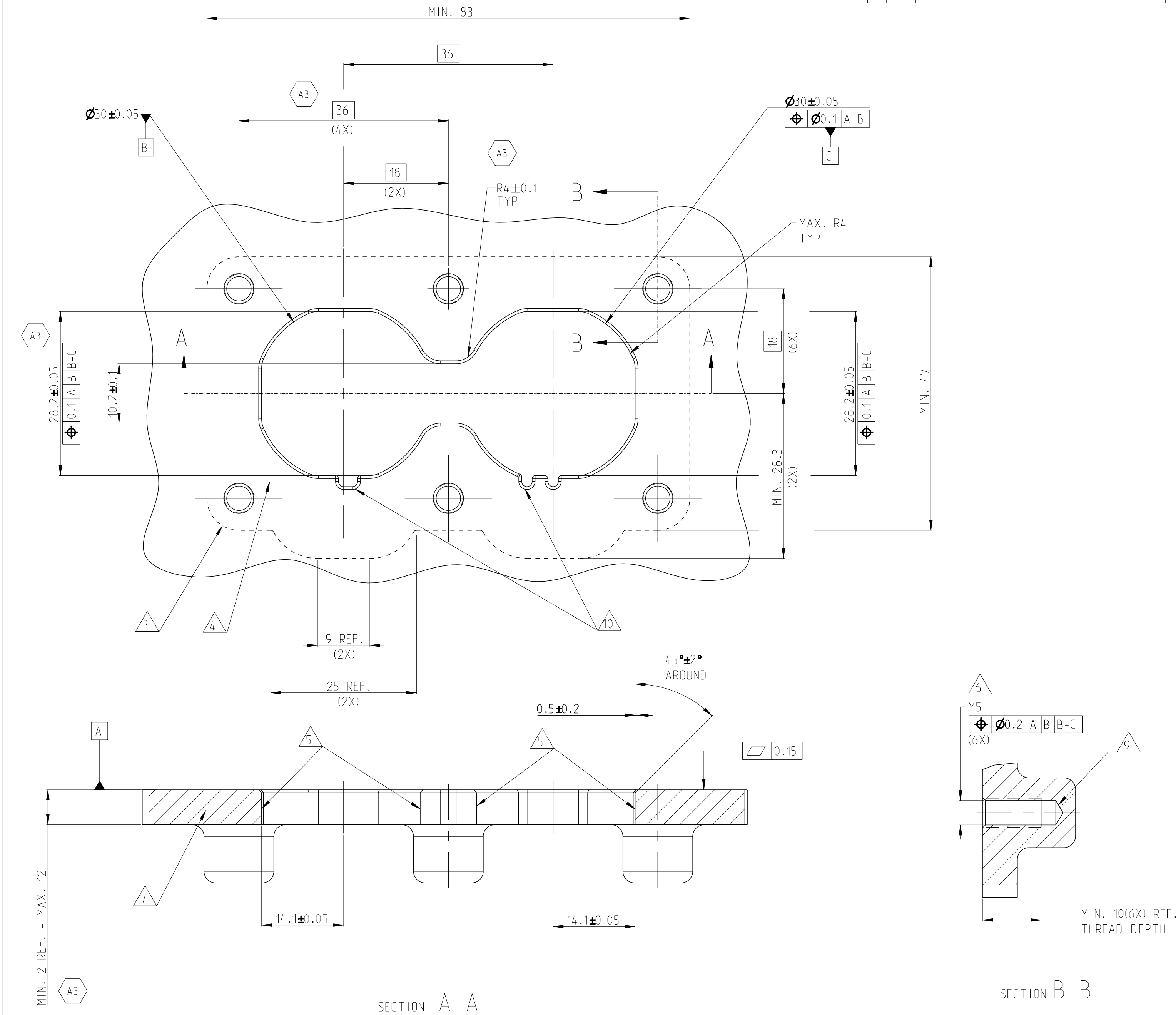
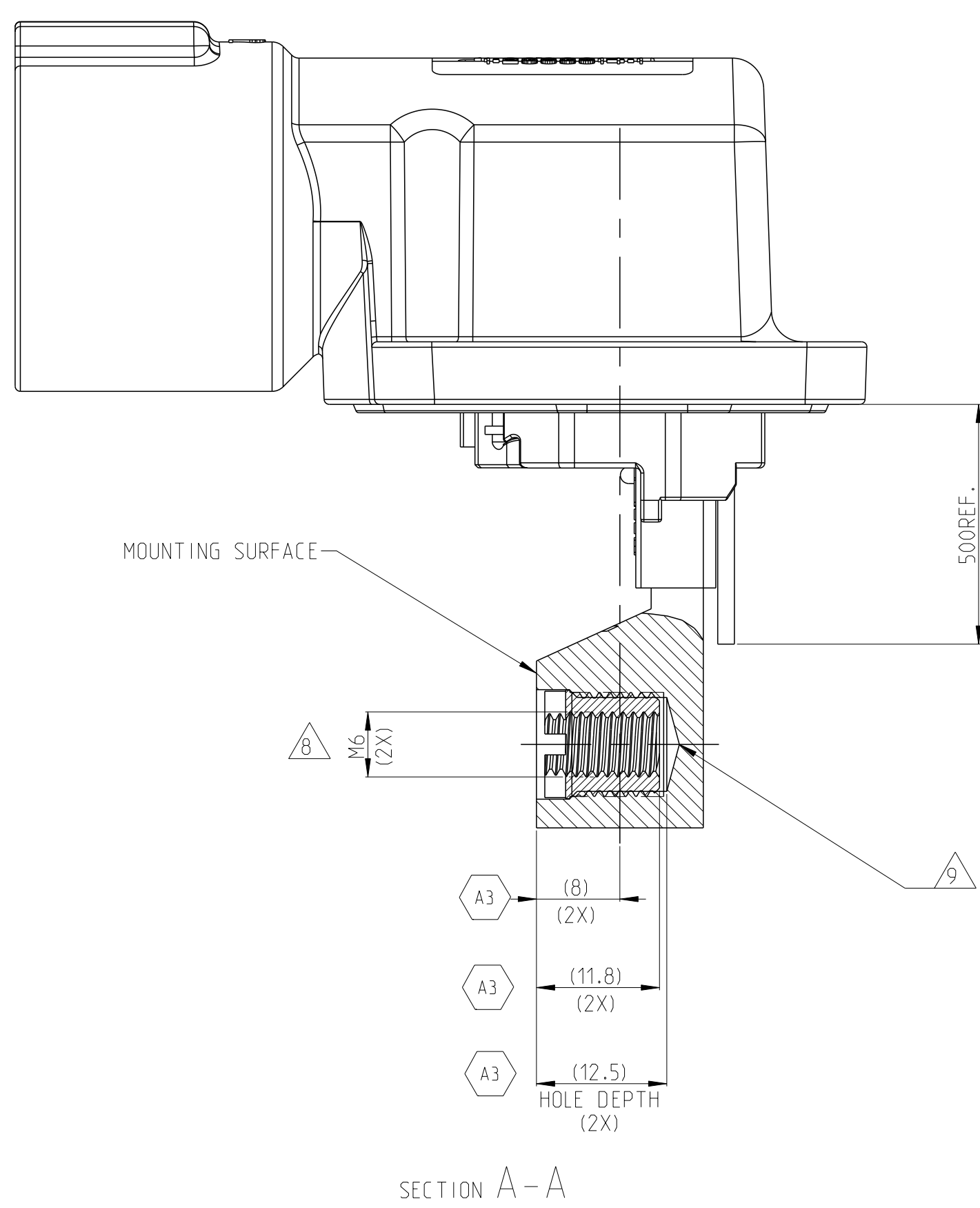
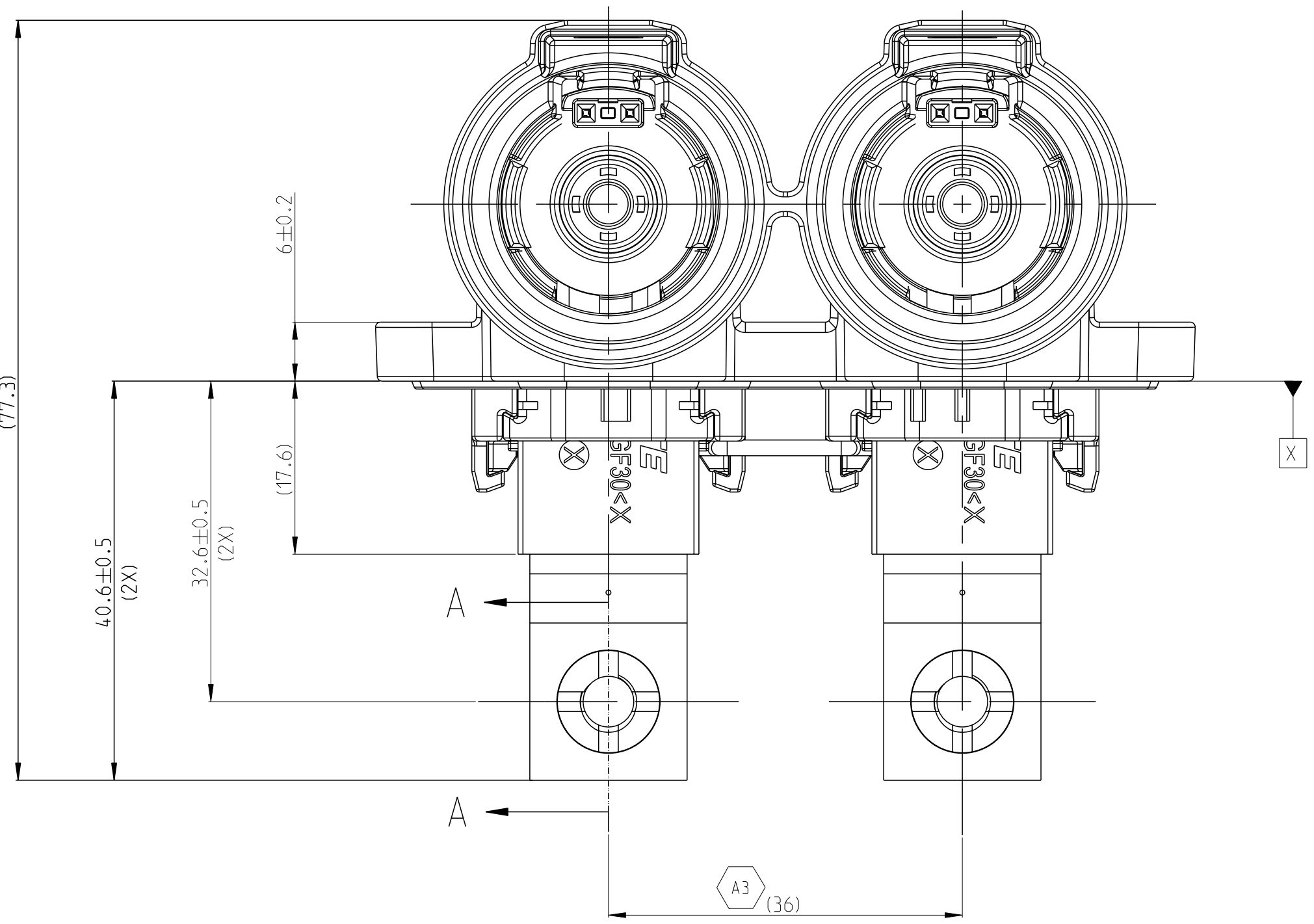


REVISIONS				
P	LV	DESCRIPTION	DATE	BY
A2		INITIAL RELEASE	28AUG2021	N.S
A3		REVISE	28AUG2022	C.C



- 1. MATING CONNECTOR REFER TO DRAWING 2394115
- 2. CODING VARIANT
- 3. FREE SPACE FOR HEADER
- 4. SEALING AREA: NO BURR, TOOL PARTING, SHRINKAGE. CAVITIES AND GATE MARKS PERMITTED. SURFACE ROUGHNESS: Ra≤1.6
- 5. DRAFT ANGLE UP TO 0.5° PERMITTED
- 6. MOUNTING SCREW M5. SCREW TYPE UP TO MANUFACTURER, DRILL HOLE DESIGN ACCORDING TO SCREW TYPE
- 7. MATERIAL: CORROSION RESISTANT, ELECTROCONDUCTIVE
- 8. SCREW M6 FOR BUSBAR CONNECTION
- 9. ALL THREAD HOLES ARE BLIND HOLES
- 10. CODE SEE SHEET 4

2394071-6	L/M	2POS,PIN DIA 10.0 HDR ASSY,90DEG	CODE HOUSING	M	PA66-GF	AQUA RED	(325)	1	11
			CODE HOUSING	L	PA66-GF	AQUA BROWN		1	10
			FOLLOW 2394071-1	-	-	-		-	1-9
2394071-5	J/K	2POS,PIN DIA 10.0 HDR ASSY,90DEG	CODE HOUSING	K	PA66-GF	AQUA GREEN	(325)	1	11
			CODE HOUSING	J	PA66-GF	ORANGE		1	10
			FOLLOW 2394071-1	-	-	-		-	1-9
2394071-4	G/H	2POS,PIN DIA 10.0 HDR ASSY,90DEG	CODE HOUSING	H	PA66-GF	YELLOW	(325)	1	11
			CODE HOUSING	G	PA66-GF	RED		1	10
			FOLLOW 2394071-1	-	-	-		-	1-9
2394071-3	E/F	2POS,PIN DIA 10.0 HDR ASSY,90DEG	CODE HOUSING	F	PA66-GF	BROWN	(325)	1	11
			CODE HOUSING	E	PA66-GF	GREEN		1	10
			FOLLOW 2394071-1	-	-	-		-	1-9
2394071-2	C/D	2POS,PIN DIA 10.0 HDR ASSY,90DEG	CODE HOUSING	D	PA66-GF	PURPLE	(325)	1	11
			CODE HOUSING	C	PA66-GF	Blue		1	10
			FOLLOW 2394071-1	-	-	-		-	1-9
2394071-1	A/B	2POS,PIN DIA 10.0 HDR ASSY,90DEG	CODE HOUSING	B	PA66-GF	NATURE	(325)	1	11
			CODE HOUSING	A	PA66-GF	BLACK		1	10
			HEADER TPA	-	PA66-GF	RED		2	9
			FINGER PROTECTION CAP	-	PA66-GF	BLACK		2	8
			FACE SEAL	-	SILICONE	RED		1	7
			BUSBAR OVERMOLD,FRONT SIDE	-	-	-		2	6
			OUTER HOUSING	-	PA66-GF	BLACK		2	5
			INNER HOUSING	-	PA66-GF	BLACK		2	4
			HV INTERLOCK CABLE, BRIDGED	-	-	-		1	3
			HV INTERLOCK CABLE	-	-	-		2	2
TE-ASSY-NO.	CODE	DESCRIPTION	DESCRIPTION	CODE	MATERIAL	NICKEL PLATED	WEIGHT (g)	QTY	ITEM

THIS DRAWING IS A CONTROLLED DOCUMENT.		REV	26AUG2021
DIMENSIONS:		CHK	26AUG2021
UNIT:		APPV	26AUG2021
TOLERANCES UNLESS OTHERWISE SPECIFIED:		PRODUCT SPEC	
Ø ±0.5		ROB-160341	
2 PL ±0.1		APPLICATION SPEC	
2 PL ±0.001		114-160181	
2 PL ±0.001		WEIGHT	SEE TABLE
MATERIAL		SCALE	CUSTOMER DRAWING
SEE TABLE		SCALE	2:1
		SHEET	1 of 4
		REV	A3

NAME

2POS,PIN DIA 10.0 HDR ASSY,90DEG

DATE

26AUG2021

BY

N.S

APPV

26AUG2022

BY

C.C

REV

2.2

SCALE

2:1

SHEET

1 of 4

REV

A3







REVISIONS				
P.	LYN	DESCRIPTION	DATE	BYN
-	-	SEE SHEET 1	-	-



TABLE 5					
*-1		*-2		*-3	
CODE A	CODE B	CODE C	CODE D	CODE E	CODE F
*-4		*-5		*-6	
CODE G	CODE H	CODE J	CODE K	CODE L	CODE M

1. MISSING DIMENSIONS FOR CODING ACC. DRAWING 2394070

THIS DRAWING IS A CONTROLLED DOCUMENT.

DIMENSIONS:  
INCHES  
MILLIMETERS

2 PLS  
3 PLS  
4 PLS  
5 PLS  
6 PLS  
7 PLS  
8 PLS  
9 PLS  
10 PLS  
11 PLS  
12 PLS  
13 PLS  
14 PLS  
15 PLS  
16 PLS  
17 PLS  
18 PLS  
19 PLS  
20 PLS  
21 PLS  
22 PLS  
23 PLS  
24 PLS  
25 PLS  
26 PLS  
27 PLS  
28 PLS  
29 PLS  
30 PLS  
31 PLS  
32 PLS  
33 PLS  
34 PLS  
35 PLS  
36 PLS  
37 PLS  
38 PLS  
39 PLS  
40 PLS  
41 PLS  
42 PLS  
43 PLS  
44 PLS  
45 PLS  
46 PLS  
47 PLS  
48 PLS  
49 PLS  
50 PLS  
51 PLS  
52 PLS  
53 PLS  
54 PLS  
55 PLS  
56 PLS  
57 PLS  
58 PLS  
59 PLS  
60 PLS  
61 PLS  
62 PLS  
63 PLS  
64 PLS  
65 PLS  
66 PLS  
67 PLS  
68 PLS  
69 PLS  
70 PLS  
71 PLS  
72 PLS  
73 PLS  
74 PLS  
75 PLS  
76 PLS  
77 PLS  
78 PLS  
79 PLS  
80 PLS  
81 PLS  
82 PLS  
83 PLS  
84 PLS  
85 PLS  
86 PLS  
87 PLS  
88 PLS  
89 PLS  
90 PLS  
91 PLS  
92 PLS  
93 PLS  
94 PLS  
95 PLS  
96 PLS  
97 PLS  
98 PLS  
99 PLS  
100 PLS

DATE: 26AUG2021

BY: N.S.H.

CHK: J.L.L.

APPV: J.L.Y.

DATE: 26AUG2021

PRODUCT SPEC: 108-160341

APPLICATION SPEC: 114-160181

WEIGHT: SEE TABLE

CUSTOMER DRAWING

NAME: 2POS.PIN DIA 10.0 HDR ASSY.90DEG HVP-HD1000

SIZE: A0

CASE CODE: 00779

DRAWING NO: C=2394071

SCALE: 2:1

SHEET: 6

OF: 6

REV: A3

STE

TE Connectivity

# Mouser Electronics

Authorized Distributor

Click to View Pricing, Inventory, Delivery & Lifecycle Information:

[TE Connectivity:](#)

[1-2394071-1](#)