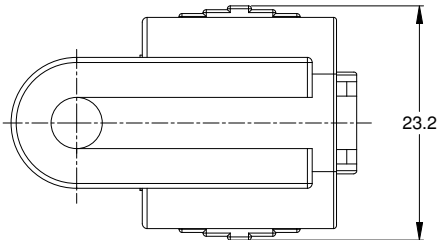
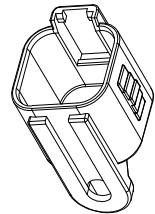
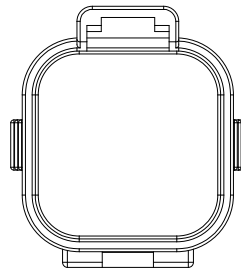
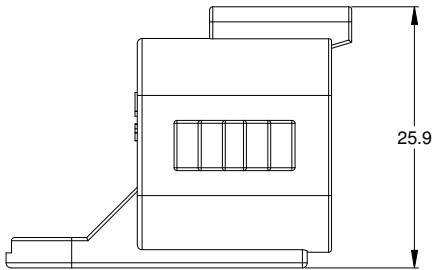
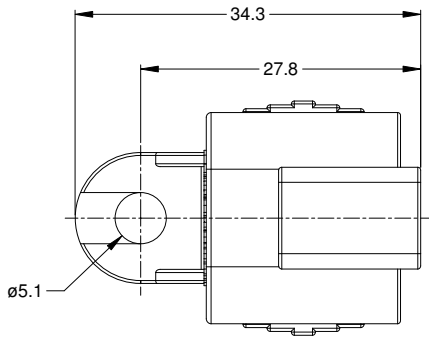



REVISIONS					
REV	ECO	DESCRIPTION	DATE	BY	APPR
A1	-	RELEASE	23JUN15	JAH	



NOTES: UNLESS OTHERWISE SPECIFIED

1. MATERIAL: THERMOPLASTIC, COLOR: BLACK
2. RoHS COMPLIANT
3. MOISTURE RESISTANCE: IP67 MATED CONDITION
4. TEMPERATURE RANGE: -55C~125C
5. USE WITH CONNECTORS AT06-6S\*  
(\* = MODIFICATIONS AND/OR COLORS)
6. ALL DIMENSIONS ARE FOR REFERENCE USE ONLY.

		AT06-6S-CAP							
		PART NUMBER		DESCRIPTION				ITEM	
QUANTITY		MATERIALS LIST							
<u>UNLESS OTHERWISE SPECIFIED</u> 1) All dimensions are in metric(mm). 2) Tolerances are as follows: 1 PL DEC ±0.30 2 PL DEC ±0.15 3 PL DEC ±0.08 Fractions ±1/64 Angles ±1° 3) Note reference = 		SIGNATURES		DATE		<div>Amphenol</div> <div>Sine Systems - <a href="http://www.amphenol-sine.com">www.amphenol-sine.com</a> 44724 Morley Drive Clinton Township, MI 48036</div>			
		DRAWN: J. HEAD		23JUN2015					
		CHECKED:							
		ENGINEER:							
		APPROVAL:							
MATERIAL SPECIFICATIONS:		CUSTOMER:				<div>PROTECTIVE CAP, 6 POSITION, AT-SERIES</div>			
PROCESS SPECIFICATIONS:		THIS DRAWING IS SUPPLIED FOR INFORMATION ONLY. DESIGN FEATURES, SPECIFICATIONS AND PERFORMANCE DATA SHOWN HEREON ARE THE PROPERTY OF THE AMPHENOL CORPORATION. NO RIGHTS OF REPRODUCTION ARE IMPLIED. ALL DIMENSIONS ARE SUBJECT TO NORMAL MANUFACTURING VARIATIONS.							
NEXT ASSY:									
		SCALE: NONE		SIZE: B C-		DWG NO: AT06-6S-CAP		REVISION: A1	
						SHEET 1		OF 1	

TITLE:

PROTECTIVE CAP, 6 POSITION, AT-SERIES

DWG NO.:

AT06-6S-CAP

REV: A1

SH: 1

OF: 1