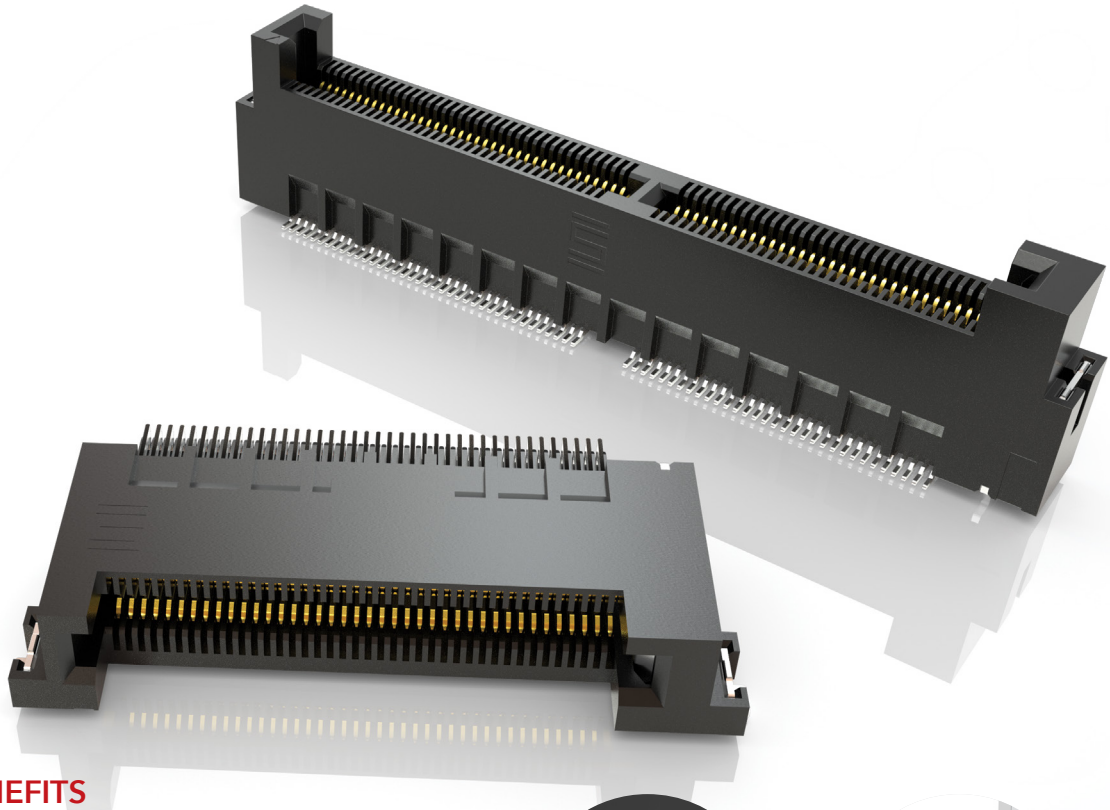


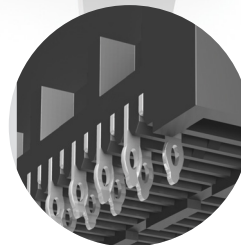
MICRO EDGE CARD SYSTEMS

0.50 mm, 0.635 mm, 0.80 mm, 1.00 mm, 1.27 mm, 2.00 mm PITCH

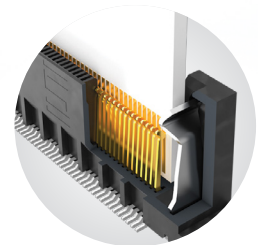


FEATURES & BENEFITS

- Up to 56 Gbps PAM4
- PCI Express® 4.0 (MEC5 Series)
- Solutions for (1.60 mm) .062" and (2.36 mm) .093" thick cards
- Choice of pitch: 0.50 mm, 0.635 mm, 0.80 mm, 1.00 mm, 1.27 mm, 2.00 mm
- Vertical, right-angle and edge mount orientations
- Available in surface mount and through-hole



Staggered press-fit tails
(MEC8-VP)



Justification beam ensures
card and body are flush
(MEC5)

KEY SPECIFICATIONS

| SERIES | PITCH | TOTAL POSITIONS | INSULATOR MATERIAL | CONTACT MATERIAL | OPERATING TEMP RANGE | CURRENT RATING | VOLTAGE RATING | LEAD-FREE SOLDERABLE |
|--------|----------|-----------------|--------------------|------------------|----------------------|----------------|-----------------|----------------------|
| MEC5 | 0.50 mm | 60-200 | Black LCP | Phosphor Bronze | -55 °C to +125 °C | 1.5 A (2 pins) | 125 VAC/177 VDC | Yes |
| MEC6 | 0.635 mm | 20-140 | Black LCP | Phosphor Bronze | -55 °C to +125 °C | 2.4 A (2 pins) | 185 VAC/262 VDC | Yes |
| MEC8 | 0.80 mm | 20-140 | Black LCP | Phosphor Bronze | -55 °C to +125 °C | 2.3 A (2 pins) | 180 VAC/255 VDC | Yes |
| MEC1 | 1.00 mm | 20-140 | Black LCP | BeCu | -55 °C to +125 °C | 2.2 A (2 pins) | 250 VAC/354 VDC | Yes |
| MECF | 1.27 mm | 10-100 | Black/Natural LCP | BeCu | -55 °C to +125 °C | 3.5 A (2 pins) | 280 VAC/396 VDC | Yes |
| MEC2 | 2.00 mm | 10-100 | Black/Natural LCP | BeCu | -55 °C to +125 °C | 3.5 A (2 pins) | 280 VAC/396 VDC | Yes |

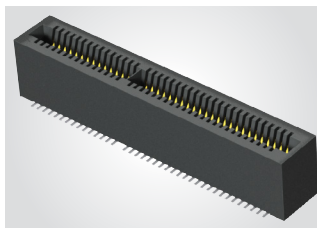
PCI-SIG®, PCI Express® and the PCIe® design marks are registered trademarks and/or service marks of PCI-SIG.

(1.00 mm) .0394" PITCH • MINI EDGE CARD SOCKET

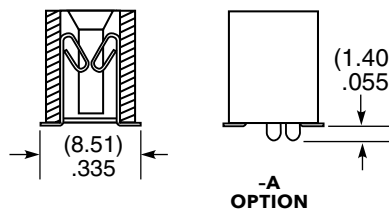
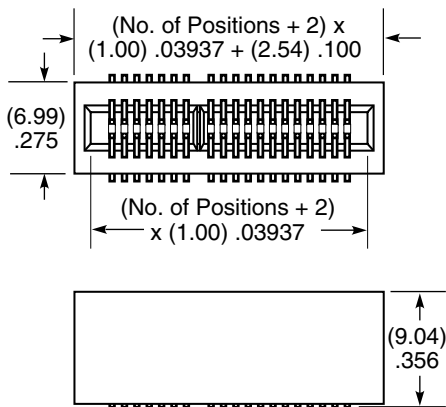
| MEC1 | 1 | POSITIONS PER ROW | 02 | PLATING OPTION | D | NP | OTHER OPTIONS | "X"R |
|------|---|------------------------------------|----|--|---|--|--|---|
| | | 05, 08, 10, 20, 30, 40, 50, 60, 70 | | -F = Gold flash on contact, Matte Tin on tail -L = 10 μ" (0.25 μm) Gold on contact, Matte Tin on tail | | Leave blank for polarization -NP =No Polarization (05, 08, 20 & 30 positions only) | -A = Alignment Pin metal or plastic at Samtec discretion -K = (7.87 mm) .310" DIA Polyimide film Pick & Place Pad | Leave blank for Tube Packaging -TR =Tape & Reel (05-60 only) -FR = Full Reel Tape & Reel (must order max. quantity per reel; contact Samtec for quantity breaks) (05-60 only) |

MEC1

Card Mates:
(1.60 mm) .062" thick card



| POSITIONS PER ROW | POLARIZED POSITIONS (No Contact) |
|-------------------|----------------------------------|
| 05 | 3, 4 |
| 08 | 5, 6 |
| 10 | 13, 14, |
| 20 | 15, 16, |
| 30 | 21, 22 |
| 40 | 31, 32 |
| 50 | 41, 42 |
| 60 | 31, 32, 63 & 64 |
| 70 | 53, 54, 115 & 116 |



Note:
Some sizes, styles and options are non-standard, non-returnable.

View complete specifications at: samtec.com?MEC1