

Printed Circuit Mount

PC / DPC Series

Miniature Low Power Transformers

Miniature Low Power Transformers

Signal's PC low power transformers are designed to operate between 50 Hz and 500 Hz without any degradation in output voltage.

General Specifications

- Power - 1.0 VA to 24 VA
- Dielectric Strength - 1500 Vrms Hipot
- Primaries - Single or dual primaries, 115 V or 115/230 V, 50-500 Hz
- Dual Secondaries - Series or parallel
- Insulation System - Class B, 130° C, UL 1446 E66312
- Mounting Brackets - see chart

Agency Certifications

- UL recognized to UL 506 / UL 5085-2, File # E63829
- CSA certified to C22.2 #66.1, File # 221070



belfuse.com/signal

PC / DPC Series Datasheet

Part Number Selection

Primary 50/500 Hz		VA	Secondary RMS Rating	
Single 115 V 6 Pin	Dual 115/230 V 8 Pin	Size	Series	Parallel
PC-10-90	DPC-10-90	1.0	10 VCT @ 90 mA	5 V @ 180 mA
PC-10-120	DPC-10-120	1.2	10 VCT @ 120 mA	5 V @ 240 mA
PC-10-440	DPC-10-440	4.4	10 VCT @ 440 mA	5 V @ 880 mA
PC-10-1000	DPC-10-1000	10.0	10 VCT @ 1.0 A	5 V @ 2.0 A
PC-10-2400	DPC-10-2400	24.0	10 VCT @ 2.4 A	5 V @ 4.8 A
PC-12-70	DPC-12-70	1.0	12.6 VCT @ 70 mA	6.3 V @ 140 mA
PC-12-100	DPC-12-100	1.2	12.6 VCT @ 100 mA	6.3 V @ 200 mA
PC-12-350	DPC-12-350	4.4	12.6 VCT @ 350 mA	6.3 V @ 700 mA
PC-12-800	DPC-12-800	10.0	12.6 VCT @ 800 mA	6.3 V @ 1.6 A
PC-12-2000	DPC-12-2000	24.0	12.6 VCT @ 2.0 A	6.3 V @ 4.0 A
PC-16-55	DPC-16-55	1.0	16 VCT @ 55 mA	8 V @ 110 mA
PC-16-75	DPC-16-75	1.2	16 VCT @ 75 mA	8 V @ 150 mA
PC-16-260	DPC-16-260	4.4	16 VCT @ 260 mA	8 V @ 520 mA
PC-16-640	DPC-16-640	10.0	16 VCT @ 640 mA	8 V @ 1.28 A
PC-16-1500	DPC-16-1500	24.0	16 VCT @ 1.50 A	8 V @ 3.0 A
PC-20-45	DPC-20-45	1.0	20 VCT @ 45 mA	10 V @ 90 mA
PC-20-60	DPC-20-60	1.2	20 VCT @ 60 mA	10 V @ 120 mA
PC-20-220	DPC-20-220	4.4	20 VCT @ 220 mA	10 V @ 440 mA
PC-20-500	DPC-20-500	10.0	20 VCT @ 500 mA	10 V @ 1.0 A
PC-20-1200	DPC-20-1200	24.0	20 VCT @ 1.20 A	10 V @ 2.40 A
PC-24-35	DPC-24-35	1.0	24 VCT @ 35 mA	12 V @ 70 mA
PC-24-50	DPC-24-50	1.2	24 VCT @ 50 mA	12 V @ 100 mA
PC-24-180	DPC-24-180	4.4	24 VCT @ 180 mA	12 V @ 360 mA
PC-24-450	DPC-24-450	10.0	24 VCT @ 450 mA	12 V @ 900 mA
PC-24-1000	DPC-24-1000	24.0	24 VCT @ 1.0 A	12 V @ 2.0 A

Primary 50/500 Hz		VA	Secondary RMS Rating	
Single 115 V 6 Pin	Dual 115/230 V 8 Pin	Size	Series	Parallel
PC-28-30	DPC-28-30	1.0	28 VCT @ 30 mA	14 V @ 60 mA
PC-28-40	DPC-28-40	1.2	28 VCT @ 40 mA	14 V @ 80 mA
PC-28-160	DPC-28-160	4.4	28 VCT @ 160 mA	14 V @ 320 mA
PC-28-360	DPC-28-360	10.0	28 VCT @ 360 mA	14 V @ 720 mA
PC-28-800	DPC-28-800	24.0	28 VCT @ 800 mA	14 V @ 1.60 A
PC-34-25	DPC-34-25	1.0	34 VCT @ 25 mA	17 V @ 50 mA
PC-34-35	DPC-34-35	1.2	34 VCT @ 35 mA	17 V @ 70 mA
PC-34-125	DPC-34-125	4.4	34 VCT @ 125mA	17 V @ 250 mA
PC-34-300	DPC-34-300	10.0	34 VCT @ 300 mA	17 V @ 600 mA
PC-34-700	DPC-34-700	24.0	34 VCT @ 700 mA	17 V @ 1.40 A
PC-40-20	DPC-40-20	1.0	40 VCT @ 20 mA	20 V @ 40 mA
PC-40-30	DPC-40-30	1.2	40 VCT @ 30 mA	20 V @ 60 mA
PC-40-110	DPC-40-110	4.4	40 VCT @ 110 mA	20 V @ 220 mA
PC-40-250	DPC-40-250	10.0	40 VCT @ 250 mA	20 V @ 500 mA
PC-40-600	DPC-40-600	24.0	40 VCT @ 600 mA	20 V @ 1.20 A
PC-56-15	DPC-56-15	1.0	56 VCT @ 15 mA	28 V @ 30 mA
PC-56-20	DPC-56-20	1.2	56 VCT @ 20 mA	28 V @ 40 mA
PC-56-80	DPC-56-80	4.4	56 VCT @ 80 mA	28 V @ 160 mA
PC-56-180	DPC-56-180	10.0	56 VCT @ 180 mA	28 V @ 360 mA
PC-56-420	DPC-56-420	24.0	56 VCT @ 420 mA	28 V @ 840 mA
PC-120-8	DPC-120-8	1.0	120 VCT @ 8 mA	60 V @ 16 mA
PC-120-10	DPC-120-10	1.2	120 VCT @ 10 mA	60 V @ 20 mA
PC-120-35	DPC-120-35	4.4	120 VCT @ 35 mA	60 V @ 70 mA
PC-120-85	DPC-120-85	10.0	120 VCT @ 85 mA	60 V @ 170 mA
PC-120-200	DPC-120-200	24.0	120 VCT @ 200 mA	60 V @ 400 mA



Custom versions available upon request.



128 Atlantic Avenue, Lynbrook, NY 11563
 Toll Free 866-239-5777 | Tel 516-239-5777 | Fax 516-239-7208
 sales@signaltransformer.com | techhelp@signaltransformer.com

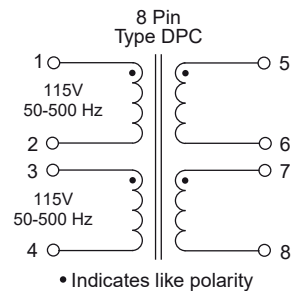
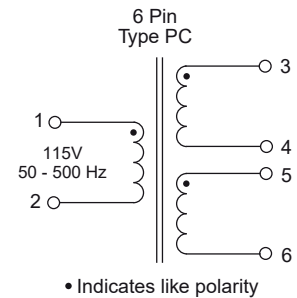
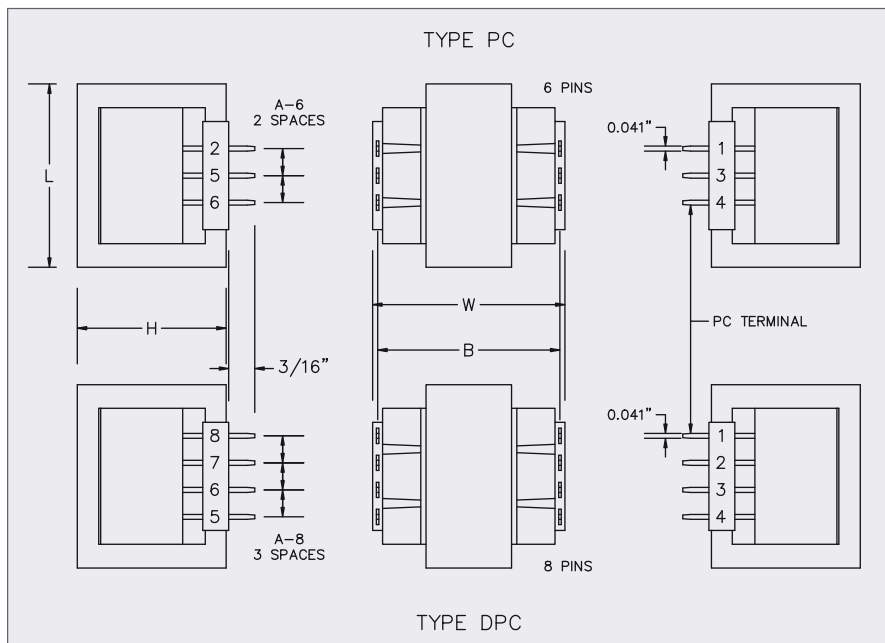
belfuse.com/signal

Mechanical Specifications

VA	L	W	H	A-6	A-8	B	Weight	Optional Bracket *			
				6 Pin	8 Pin			Part Number	MW	MD	
Size	Inches (mm)							oz (kg)	Inches (mm)		
1.0	1.00 (25.4)	1.37 (34.92)	0.83 (21.08)	0.25 (6.35)	0.20 (5.08)	1.23 (31.2)	2.5 (0.07)	-	-	-	
1.2	1.37 (34.9)	1.12 (28.6)	1.18 (30.15)	0.31 (7.92)	0.20 (5.08)	1.03 (26.2)	3 (0.08)	-	-	-	
4.4	1.62 (41.3)	1.25 (31.8)	1.37 (34.92)	0.40 (10.16)	0.25 (6.35)	1.13 (28.7)	5 (0.14)	-	-	-	
10.0	1.87 (47.6)	1.43 (36.5)	1.62 (41.27)	0.40 (10.16)	0.25 (6.35)	1.33 (33.7)	9 (0.23)	10-BR	1.64 (41.7)	1.12 (28.6)	
24.0	1.62 (41.3)	2.25 (57.2)	1.37 (34.93)	0.40 (10.16)	0.25 (6.35)	2.13 (54.1)	12 (0.34)	24-BR	1.37 (34.9)	2.00 (50.8)	

* An optional slide on mounting bracket is available for sizes 10 & 24.
These brackets do not consume any additional board space but add 1/32" to the transformer's height.

See Accessories page for mounting brackets.



Custom versions available upon request.



128 Atlantic Avenue, Lynbrook, NY 11563
Toll Free 866-239-5777 | Tel 516-239-5777 | Fax 516-239-7208
sales@signaltransformer.com | techhelp@signaltransformer.com

belfuse.com/signal