

Customer Information Sheet

DRAWING No.: M300-FV3064500

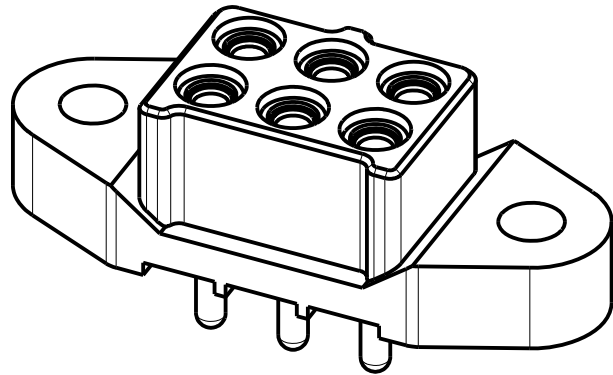
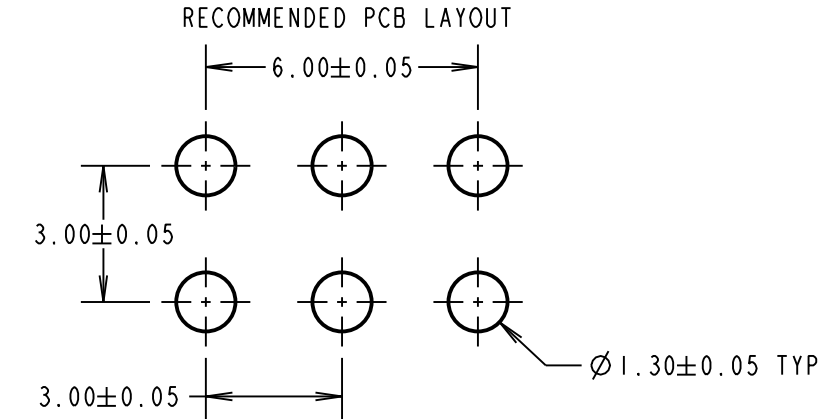
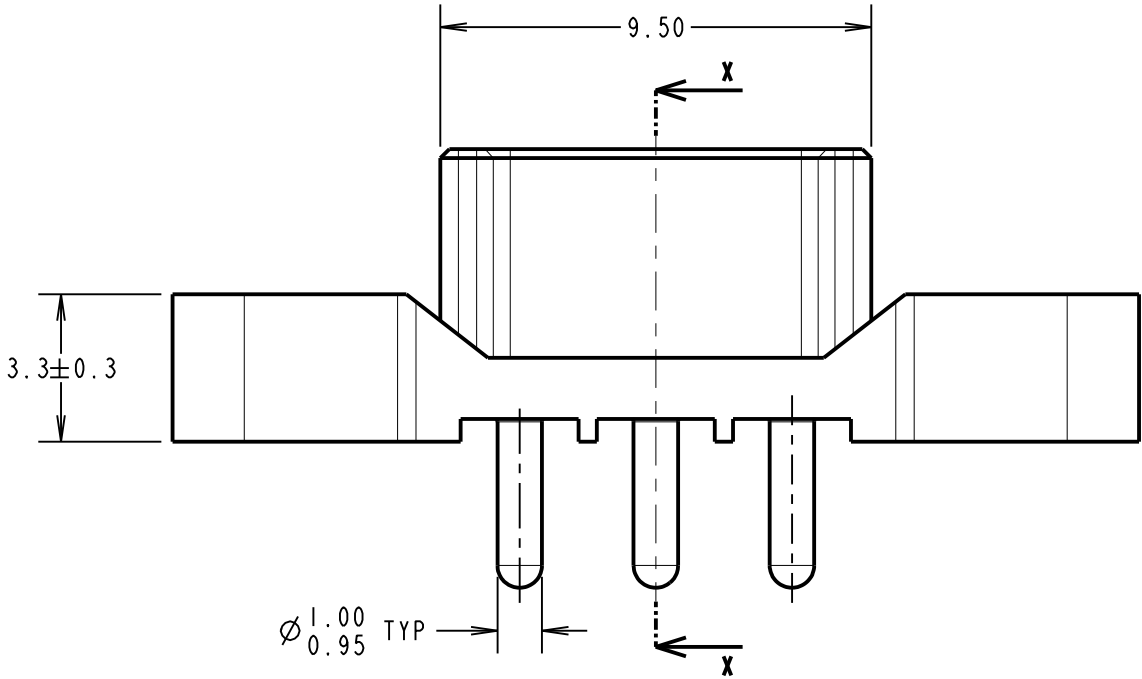
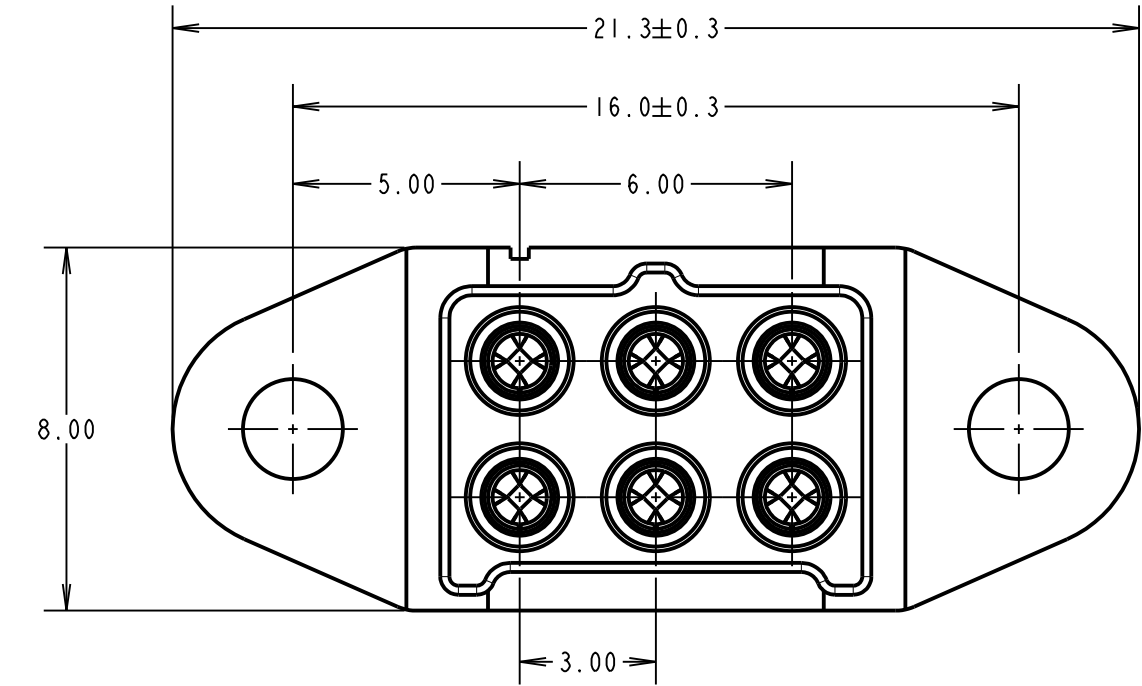
IF IN DOUBT - ASK

C

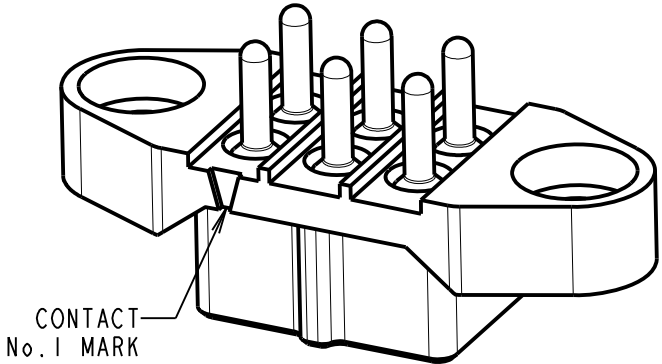
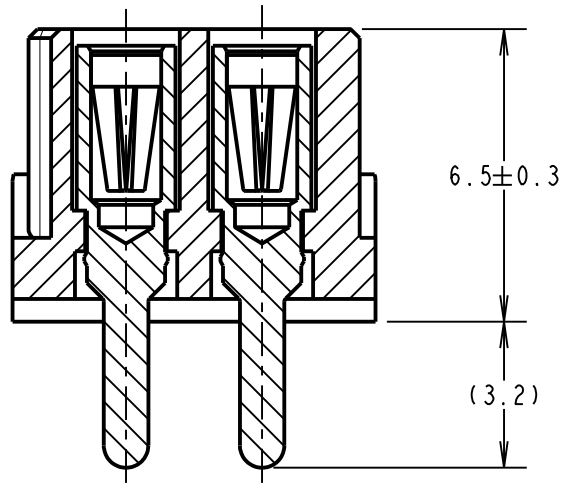
NOT TO SCALE

THIRD ANGLE PROJECTION

ALL DIMENSIONS IN mm



SECTION
X-X



SPECIFICATIONS:

MATERIAL:

MOULDING = GLASS-FILLED PA46 UL94V-0, GREEN

CONTACT CLIP = BERYLLIUM COPPER

CONTACT SHELL = BRASS

FINISH (ALL OVER NICKEL):

0.10/0.17µ GOLD CLIP, 0.25/0.30µ GOLD SHELL

ELECTRICAL:

CURRENT RATING = 10A MAX

WORKING VOLTAGE = 600V AC/DC

VOLTAGE PROOF = 1800V AC/DC

CONTACT RESISTANCE = 6mΩ MAX

INSULATION RESISTANCE = 100MΩ MIN

MECHANICAL:

DURABILITY = 1000 OPERATIONS

INSERTION FORCE (Ø1.0mm GAUGE) = 9.0N MAX

WITHDRAWAL FORCE (Ø1.0mm GAUGE) = 1.0N MIN

ENVIRONMENTAL:

TEMPERATURE RANGE = -65°C TO +175°C

PACKING:

TUBE

FOR COMPLETE SPECIFICATION, SEE COMPONENT SPECIFICATION C048XX (LATEST ISSUE)

MGP	I	11.12.15	13198
NAME	ISS.	DATE	C/NOTE
APPROVED: MGP			
CHECKED: SB			
DRAWN: MARK G PLESTED			
CUSTOMER REF.:			
ASSEMBLY DRG:			

HARWIN

www.harwin.com
technical@harwin.com

THIS DRAWING AND ANY INFORMATION OR DESCRIPTIVE MATTER SET OUT HEREON ARE CONFIDENTIAL AND COPYRIGHT PROPERTY OF THE HARWIN GROUP AND MUST NOT BE DISCLOSED, LOANED, COPIED OR USED FOR MANUFACTURING, TENDERING OR FOR ANY OTHER PURPOSE WITHOUT THEIR WRITTEN PERMISSION.

TOLERANCES

X. = ±1mm

X.X = ±0.50mm

X.XX = ±0.10mm

X.XXX = ±0.01mm

ANGLES = ±5°

UNLESS STATED

MATERIAL:

SEE ABOVE

FINISH: SEE ABOVE

S/AREA: mm²

TITLE: 1mm POWER CONNECTOR
DIL VERTICAL PC TAIL
FEMALE ASSEMBLY

DRAWING NUMBER:

M300-FV3064500

SHT 2 OF 2

Mouser Electronics

Authorized Distributor

Click to View Pricing, Inventory, Delivery & Lifecycle Information:

Harwin:

[M300-FV3064500](#) [M300-FV3104500](#)