

# PART NUMBER CREATOR

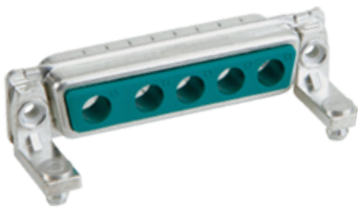
for Combination with no signal contacts

Arrangements which accept only the #8 sized contacts are: **2W2C, 3W3, 3W3C, 5W5 and 8W8**  
The available #8 size contacts include:

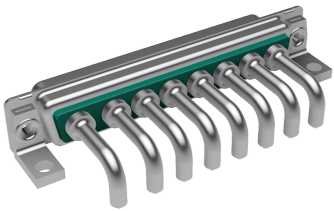
- Power with current ratings from 10 thru 40 amps
- Coax in 50 or 75 ohms
- High Voltage with plastic bodies for ratings up to 2,8 kV

The connectors are available:

with NO contacts at all



factory pre-loaded



**Included configurations are:**

- No hardware, flange has thru holes, typically used in a hood for the cable end
- Flange threads in 4-40 or M3
- Standoffs for straight PCB mounting with or without boardlock clips
- Right angle bracket with mounting hole locations in accordance with the footprint chosen

The Part Number Creator for these arrangements includes over 2500 choices.  
Configurations and hardware choices are all "coded" using the Part Number Creator.

**Here are some examples of "coding" for some popular ones, to help you to create your own:**

1. Please note that some hardware choices are optimized for a specific PCB thickness
2. Power and Coax Contacts are available in 2 quality classes

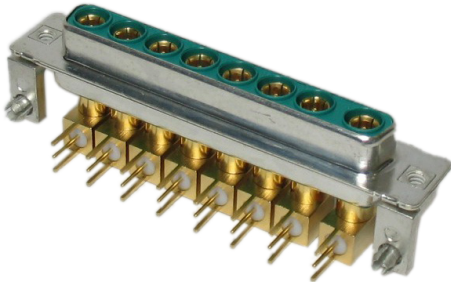
Example: 2W2 female, with 20 amp solder cup for a cable end:

**302W2CSXX42A10X**



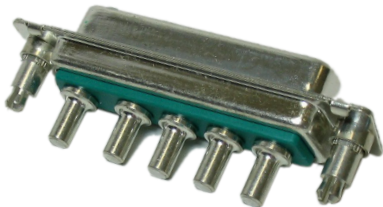
Example: 8W8 female, right angle with coax contacts, brackets with boardlocks:

**3008W8SXX88N40X**



Example: 5W5 straight, PCB power contacts, standoffs:

**3005W5SXX51E20X**



PART NUMBER CREATOR

for Combination with no signal contacts

3 003W3 S X X 6 1 A 1 O X

Product Line

3 = Shell steel tin plated

1 = Brass tin plated\*

5 = Shell yellow chromated\* (not RoHS compliant)

A = Stainless steel\*

\*on request

Shell size and design

1 = 2W2C

2 = 3W3, 3W3C

3 = 5W5

4 = 8W8

Empty positions ADD „0“ = 003W3

Contact type

P = Plug connector

S = Socket connector

X = Crimp and 3W3, 5W5, 8W8, 2W2C, 3W3C (no contacts are supplied with the connector)

\*on request

Termination only for no SIGNAL contacts

X = 3W3, 5W5, 8W8, 2W2C, 3W3C

Termination for HIGH POWER- or COAXIAL contacts

Quality class 3 / Quality class 1

C1 = Solder/Crimp angled 10 A

C2 = Solder/Crimp angled 20 A

C3 = Solder/Crimp angled 30 A

C4 = Solder/Crimp angled 40 A

F2,61/F1,41 = Solder cup 10 A

F4,62/F3,42 = Solder cup 20 A

F6,63/F5,43 = Solder cup 30 A

F8,64/F7,44 = Solder cup 40 A

68/48 = Solder pin, straight 20 A, D= .077"/1.95 mm

69/49 = Solder pin, straight 20 A, D= .102"/2.60 mm

70/50 = Solder pin, straight 20 A, D= .110"/2.85 mm

71/51 = Solder pin, straight 30 A, D= .130"/3.18 mm

72/52 = Solder pin, straight 40 A, D= .150"/3.75 mm

Quality class 3 / Quality class 1

59/55 = Solder pin, angled 15 A

73/56 = Solder pin, angled 20 A

74/57 = Solder pin, angled 30 A

75/58 = Solder pin, angled 40 A

77/60 = Solder pin, angled 40 A

81/66 = Solder pin, angled 20 A

82/67 = Solder pin, angled 30 A

85/65 = Solder pin, angled 30 A

G7/76 = 3 Solder pins Straight 50 Ω

G9/78 = 3 Solder pins angled 50 Ω

H1/79 = 3 Solder pins angled 50 Ω

H4/80 = 5 Solder pins angled 50 Ω

G8/86 = 3 Solder pins Straight 75 Ω

Quality class 3 / Quality class 1

H2/88 = 3 Solder pins angled 75 Ω

H3/89 = 3 Solder pins angled 75 Ω

H5/90 = 5 Solder pins angled 75 Ω

91 = Screw termination 20 A

/P1 = press fit 30A

/P2 = press fit 30A

/P4 = press fit 30A

99 = no high power, coax or crimp contacts loaded

Coaxial contacts with cable termination must be ordered separately.

Mounting style

A1 = Riveted

A2 = M3 threaded insert

A3 = 440 UNC threaded insert

A4 = M3 threaded rear spacer

A5 = 440 UNC threaded rear spacer

A6 = Float fastening

A7 = Threaded rear spacer for M3 press fit

A8 = Threaded rear spacer for 440 UNC press fit

C1 = M3 threaded rear spacer with PCB clip, PCB .063"/1.60 mm

C2 = 440 UNC threaded rear spacer with PCB clip, PCB .063"/1.60 mm

C3 = M3 threaded rear spacer with PCB clip, PCB .091"/2.30 mm

C4 = 440 UNC threaded rear spacer with PCB clip, PCB .091"/2.30 mm

C5 = M3 threaded rear spacer with PCB clip, PCB .126"/3.20 mm

C6 = 440 UNC Threaded rear spacer with PCB clip, PCB .126"/3.20 mm

D1 = M3 clip and threaded rear spacer with PCB clip, PCB .063"/1.60 mm

D2 = 440 UNC clip and threaded rear spacer with PCB clip, PCB .063"/1.60 mm

D3 = M3 clip and threaded rear spacer with PCB clip, PCB .091"/2.30 mm

D4 = 440 UNC clip and threaded rear spacer clip, PCB .091"/2.30 mm

D5 = M3 clip and threaded rear spacer with PCB clip, PCB .126"/3.20 mm

D6 = 440 UNC clip and threaded rear spacer with PCB clip, PCB .126"/3.20 mm

E1 = M3 threaded rear spacer with PCB clip, PCB .063"/1.60 mm

E2 = 440 UNC threaded rear spacer with PCB clip, PCB .063"/1.60 mm

E3 = M3 threaded rear spacer with PCB clip, PCB .091"/2.30 mm

E4 = 440 UNC threaded rear spacer with PCB clip, PCB .091"/2.30 mm

E5 = M3 threaded rear spacer with PCB clip, PCB .126"/3.20 mm

E6 = 440 UNC threaded rear spacer with PCB clip, PCB .126"/3.20 mm

F1 = M3 clip and threaded rear spacer with PCB clip, PCB .063"/1.60 mm

F2 = 440 UNC clip and threaded rear spacer with PCB clip, PCB .063"/1.60 mm

F3 = M3 clip and threaded rear spacer with PCB clip, PCB .091"/2.30 mm

F4 = 440 UNC clip and threaded rear spacer with PCB clip, PCB .091"/2.30 mm

F5 = M3 clip and threaded rear spacer with PCB clip, PCB .126"/3.20 mm

F6 = 440 UNC clip and threaded rear spacer with PCB clip, PCB .126"/3.20 mm

G1 = Metal bracket, M3 threaded insert for .370"/9.40 mm

G2 = Metal bracket, 440 UNC threaded insert for .370"/9.40 mm

G3 = Metal bracket, M3 threaded insert and clip for .370"/9.40 mm

G4 = Metal bracket, 440 UNC threaded insert and clip for .370"/9.40 mm

H1 = Metal bracket, M3 threaded lock for .370"/9.40 mm

H2 = Metal bracket, 440 UNC threaded lock for .370"/9.40 mm

H3 = Metal bracket, M3 threaded lock and clip for .370"/9.40 mm

H4 = Metal bracket, 440 UNC threaded lock and clip for .370"/9.40 mm

N1 = Metal bracket, M3 threaded insert for .280"/7.19 mm

N2 = Metal bracket, 440 UNC threaded insert for .280"/7.19 mm

N3 = Metal bracket, M3 threaded insert and clip for .280"/7.19 mm

N4 = Metal bracket, 440 UNC threaded insert and clip for .280"/7.19 mm

P1 = Metal bracket, M3 threaded lock for .280"/7.19 mm

P2 = Metal bracket, 440 UNC threaded lock for .280"/7.19 mm

P3 = Metal bracket, M3 threaded lock and clip for .280"/7.19 mm

P4 = Metal bracket, 440 UNC threaded lock and clip for .280"/7.19 mm

W1 = Threaded rear spacer with M3 press in pin

W2 = Threaded rear spacer with 440 UNC press in pin

OX = Standard

2 | 2 CONEC®  
Downloaded from Arrow.com