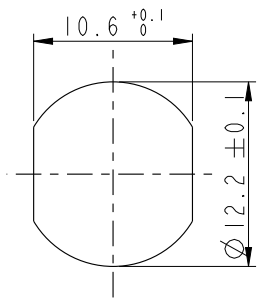
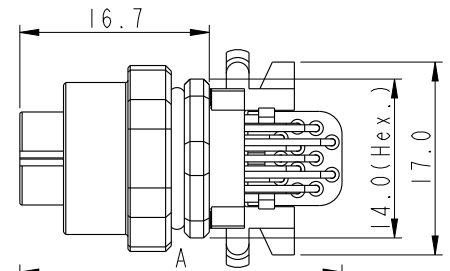


THIS DOCUMENT IS SUBJECT TO CHANGE WITHOUT NOTICE. IT IS CONFIDENTIAL AND A PROPERTY OF Amphenol LTW. DISCLOSURE TO THIRD PARTY HAS TO BE AUTHORIZED BY Amphenol LTW.

REV.	ECN NO.	DATE	SIGN	DESCRIPTION
M	C241521	2024/12/31	Ruru	X6
N	C251374	2025/10/27	Vicky	X1
O	C260387	2026/04/13	Felix Tang	X1

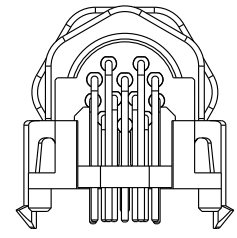
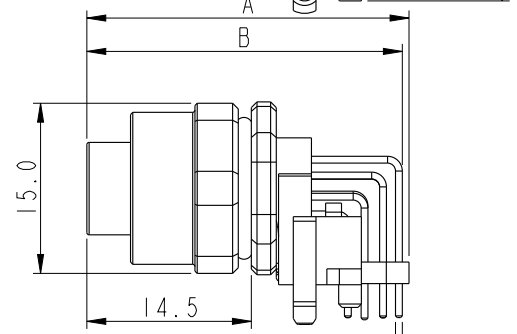
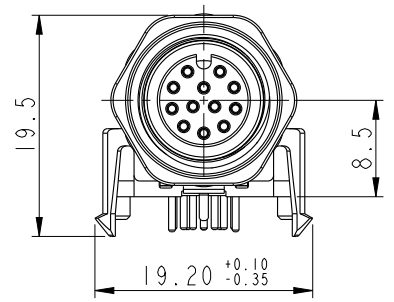


Recommended Panel Cut-Out

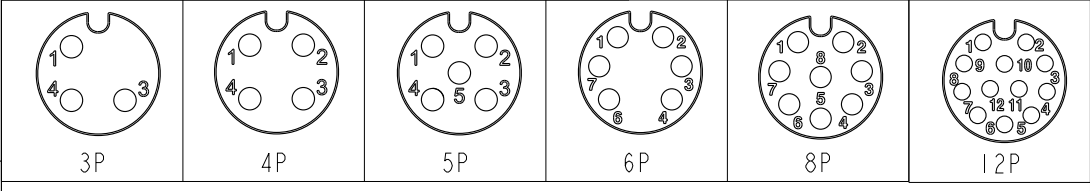


MSAS-XXPFFR-SF7003

XX: No. Of Pin  
 2Pcs Nut mixed assembly



MSAS-03PFFR-SF7003	26.6	25.5	1.0
MSAS-04PFFR-SF7003	26.6	25.5	1.0
MSAS-05PFFR-SF7003	26.6	25.5	1.0
MSAS-06PFFR-SF7003	26.4	25.7	0.8
MSAS-08PFFR-SF7003	26.4	25.7	0.8
MSAS-12PFFR-SF7003	28.4	27.8	0.6
Item No.	A	B	OD



Pin Assignment Front View

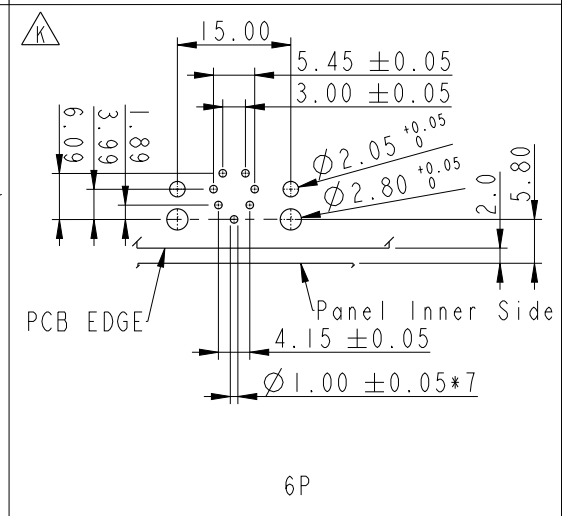
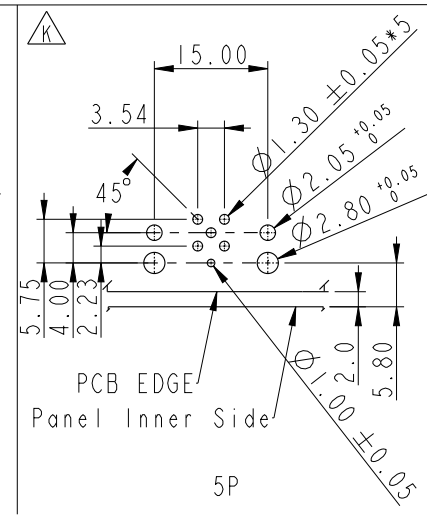
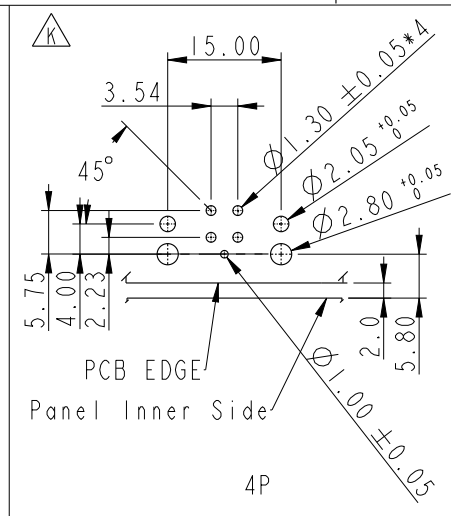
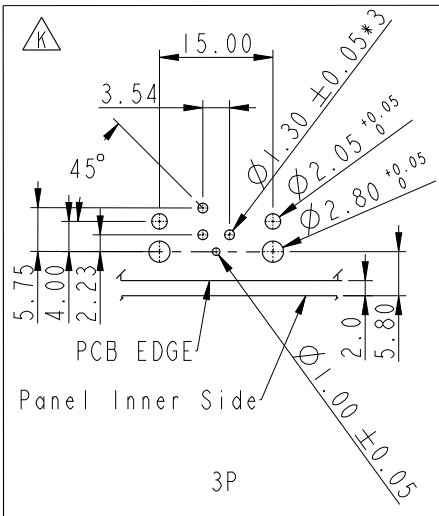
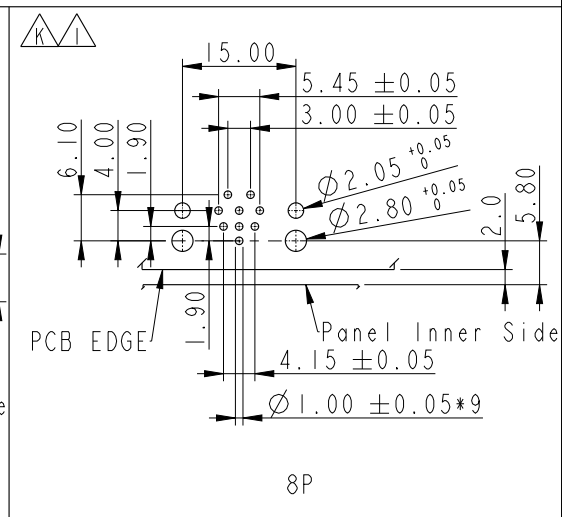
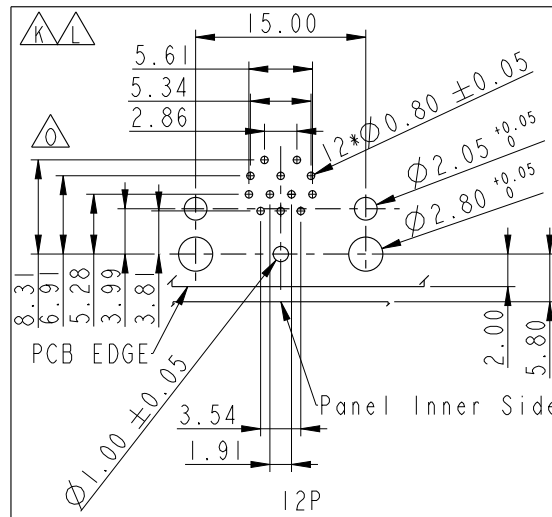
UNIT: mm			TITLE N SEN, M12 A -SHLD, SCREW RECEPTACLE, F, F, PCB R
TOLERANCE .X ±0.25 .XX ±0.1 .XXX ±0.05 ANGLES ±1°	SCALE 3:2	SIZE A4	SHEET 1 OF 3
REV. 0	WC-REV. .0	Inspection item	

**Amphenol LTW**  
 安費諾亮泰企業股份有限公司

ITEM NO.	DRAWN BY Felix Tang	DATE 2026/04/13
DWG NO. MSAS-XXPFFR-SF7003	CHECKED BY Arvin Chan	DATE 2026/04/13
CUSTOMER ALTW	APPROVED BY Fisher Wang	DATE 2026/04/13

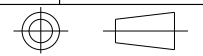
Note:  
 \* RoHS Compliant  
 \* Important dimension  
 \* Waterproof rate: IP67, mated  
 \* Connector  
 Housing: Thermoplastic, Black  
 Pin: Copper alloy, Gold plated  
 \* Nut: Metal  
 \* O-Ring: Rubber, Gray  
 \* For panel thickness max: 3.0mm  
 \* For pcb thickness max: 1.6mm  
 \* The Connector Nut Is Packed Separately In The Bag

THIS DOCUMENT IS SUBJECT TO CHANGE WITHOUT NOTICE. IT IS CONFIDENTIAL AND A PROPERTY OF Amphenol LTW. DISCLOSURE TO THIRD PARTY HAS TO BE AUTHORIZED BY Amphenol LTW.



PCB Layout

UNIT: mm



TITLE  
N SEN, M12 A -SHLD, SCREW  
RECEPTACLE, F, F, PCB R

**Amphenol LTW**

安費諾亮泰企業股份有限公司

ITEM NO

DRAWN BY  
Felix Tang

DATE  
2026/04/13

DWG NO  
MSAS-XXPFFR-SF7003

CHECKED BY  
Arvin Chan

DATE  
2026/04/13

CUSTOMER  
ALTW

APPROVED BY  
Fisher Wang

DATE  
2026/04/13

TOLERANCE	
.X	±0.25
.XX	±0.1
.XXX	±0.05
ANGLES	±1°

SCALE	3:2	SIZE	A4	SHEET	2	OF	3
REV.	0	WC-REV.	.0	☉: Inspection item			

THIS DOCUMENT IS SUBJECT TO CHANGE WITHOUT NOTICE. IT IS CONFIDENTIAL AND A PROPERTY OF Amphenol LTW. DISCLOSURE TO THIRD PARTY HAS TO BE AUTHORIZED BY Amphenol LTW.

F	2	3	4	5	6	7	8		
E									
D									
C									
B									
A	UNIT: mm 		TITLE N SEN, M12 A -SHLD, SCREW RECEPTACLE, F, F, PCB R		<h1 style="margin: 0;">Amphenol LTW</h1> <p style="margin: 0;">安費諾亮泰企業股份有限公司</p>		ITEM NO MSAS-XXPFFR-SF7003	DRAWN BY Felix Tang	DATE 2026/04/13
	TOLERANCE .X ±0.25 .XX ±0.1 .XXX ±0.05 ANGLES ±1°		SCALE 1:1	SIZE A4	SHEET 3 OF 3	REV. 0	WC-REV. .0	CHECKED BY Arvin Chan	DATE 2026/04/13
			(QC): Inspection item		CUSTOMER ALTW	APPROVED BY Fisher Wang	DATE 2026/04/13	8 W10814-03-M01A2	