

Han K 8/24 Pos. M Insert Crimp

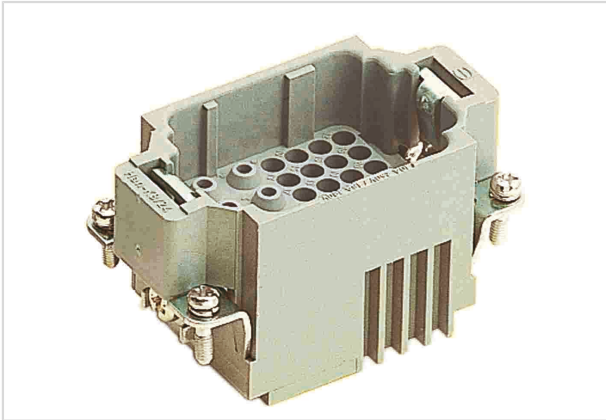


Image is for illustration purposes only. Please refer to product description.

Part number	09 38 032 3001
Specification	Han K 8/24 Pos. M Insert Crimp
HARTING eCatalogue	https://b2b.harting.com/09380323001

Identification

Category	Inserts
Series	Han-Com [®]
Identification	Han [®] K 8/24

Version

Termination method	Crimp termination
Gender	Male
Size	10 B
Number of contacts	8
further contacts	+ 24 additional signal contacts
PE contact	Yes
Details	Please order crimp contacts separately.

Technical characteristics

Conductor cross-section	0.5 ... 4 mm ² 0.14 ... 2.5 mm ² Signal
Rated current	16 A
Rated voltage conductor-earth	230 V
Rated voltage conductor-conductor	400 V
Rated impulse voltage	4 kV
Pollution degree	3
Rated current (signal)	10 A
Rated voltage (signal)	160 V



Pushing Performance

Technical characteristics

Rated impulse voltage (signal)	2.5 kV
Pollution degree (signal)	3
Rated current acc. to UL	16 A
Rated voltage acc. to UL	600 V
Rated current acc. to UL (signal)	10 A
Rated voltage acc. to UL (signal)	600 V
Rated current acc. to CSA	16 A
Rated voltage acc. to CSA	300 V
Rated current acc. to CSA (signal)	10 A
Rated voltage acc. to CSA (signal)	300 V
Insulation resistance	$>10^{10} \Omega$
Limiting temperature	-40 ... +125 °C
Mating cycles	≥ 500

Material properties

Material (insert)	Polyamide (PA)
Colour (insert)	RAL 7032 (pebble grey)
Material flammability class acc. to UL 94	HB
RoHS	compliant
ELV status	compliant
China RoHS	e
REACH Annex XVII substances	No
REACH ANNEX XIV substances	No
REACH SVHC substances	No
California Proposition 65 substances	Yes
California Proposition 65 substances	Nickel Lead

Specifications and approvals

Specifications	EN 60664-1 IEC 61984
Approvals	DNV GL
UL / CSA	UL 1977 ECBT2.E235076 CSA-C22.2 No. 182.3 ECBT8.E235076



Pushing Performance

Commercial data

Packaging size	1
Net weight	53 g
Country of origin	Romania
European customs tariff number	85389099
eCl@ss	27440205 Contact insert for industrial connectors

Mouser Electronics

Authorized Distributor

Click to View Pricing, Inventory, Delivery & Lifecycle Information:

[HARTING:](#)

[09380323001](#)