

## Han K 6/36 Pos. M Insert Crimp

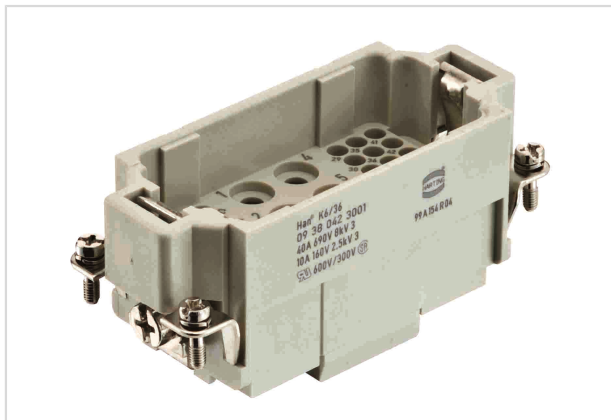


Image is for illustration purposes only. Please refer to product description.

Part number	09 38 042 3001
Specification	Han K 6/36 Pos. M Insert Crimp
HARTING eCatalogue	<a href="https://b2b.harting.com/09380423001">https://b2b.harting.com/09380423001</a>

### Identification

Category	Inserts
Series	Han-Com®
Identification	Han® K 6/36

### Version

Termination method	Crimp termination
Gender	Male
Size	16 B
Number of contacts	6
further contacts	+ 36 additional signal contacts
PE contact	Yes
Details	Please order crimp contacts separately.

### Technical characteristics

Conductor cross-section	1.5 ... 6 mm <sup>2</sup> 0.14 ... 2.5 mm <sup>2</sup> Signal
Wire outer diameter	≤5 mm
Rated current	40 A
Rated voltage	690 V
Rated impulse voltage	8 kV
Pollution degree	3
Rated current (signal)	10 A
Rated voltage (signal)	160 V



Pushing Performance

### Technical characteristics

Rated impulse voltage (signal)	2.5 kV
Pollution degree (signal)	3
Rated current acc. to UL	40 A
Rated voltage acc. to UL	600 V
Rated current acc. to UL (signal)	10 A
Rated voltage acc. to UL (signal)	600 V
Rated current acc. to CSA	40 A
Rated voltage acc. to CSA	300 V
Rated current acc. to CSA (signal)	10 A
Rated voltage acc. to CSA (signal)	300 V
Insulation resistance	$>10^{10} \Omega$
Limiting temperature	-40 ... +125 °C
Mating cycles	$\geq 500$

### Material properties

Material (insert)	Polycarbonate (PC)
Colour (insert)	RAL 7032 (pebble grey)
Material flammability class acc. to UL 94	V-0
RoHS	compliant
ELV status	compliant
China RoHS	e
REACH Annex XVII substances	No
REACH ANNEX XIV substances	No
REACH SVHC substances	No
California Proposition 65 substances	Yes
California Proposition 65 substances	Nickel Lead

### Specifications and approvals

Specifications	EN 60664-1 IEC 61984
Approvals	DNV GL
UL / CSA	UL 1977 ECBT2.E235076 CSA-C22.2 No. 182.3 ECBT8.E235076



Pushing Performance

## Commercial data

Packaging size	1
Net weight	65.7 g
Country of origin	Germany
European customs tariff number	85389099
eCl@ss	27440205 Contact insert for industrial connectors

# Mouser Electronics

Authorized Distributor

Click to View Pricing, Inventory, Delivery & Lifecycle Information:

[HARTING:](#)

[09380423001](#)