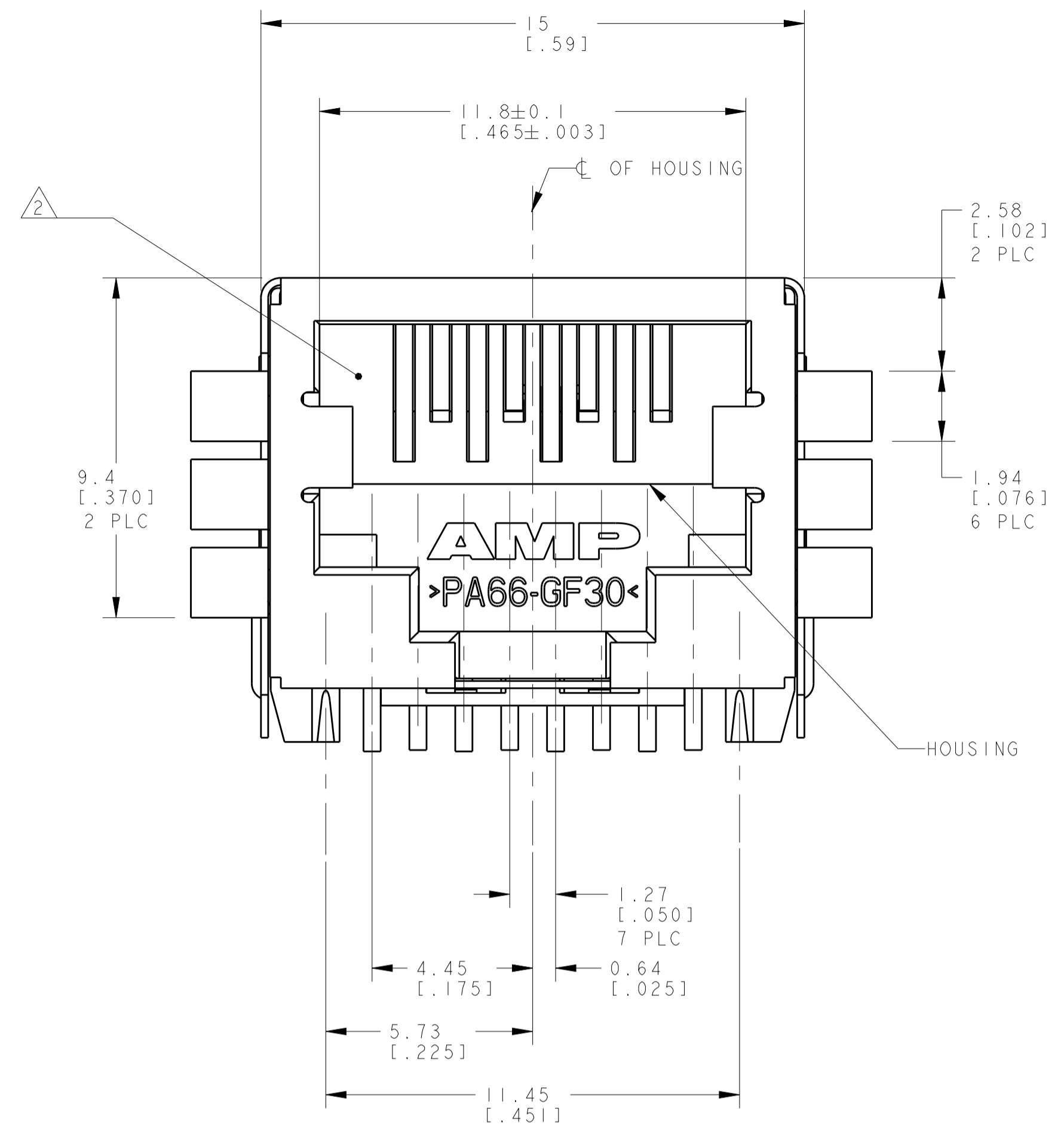
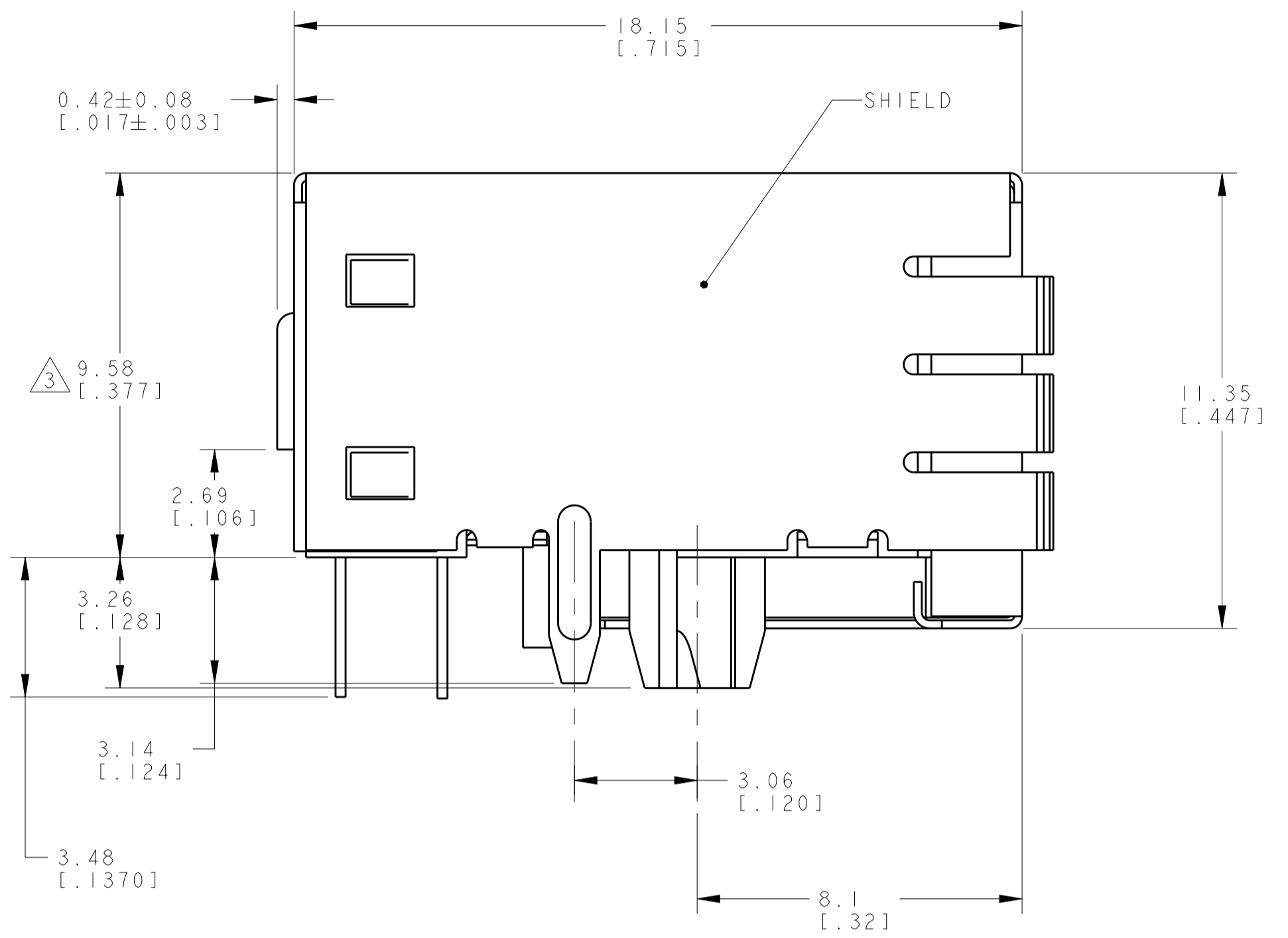
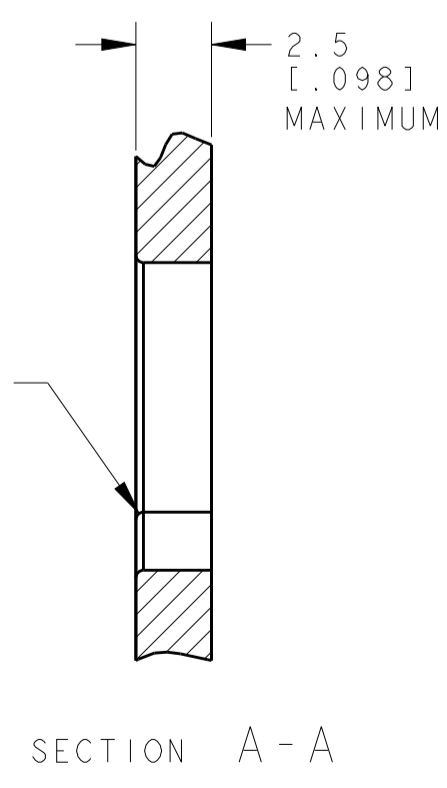
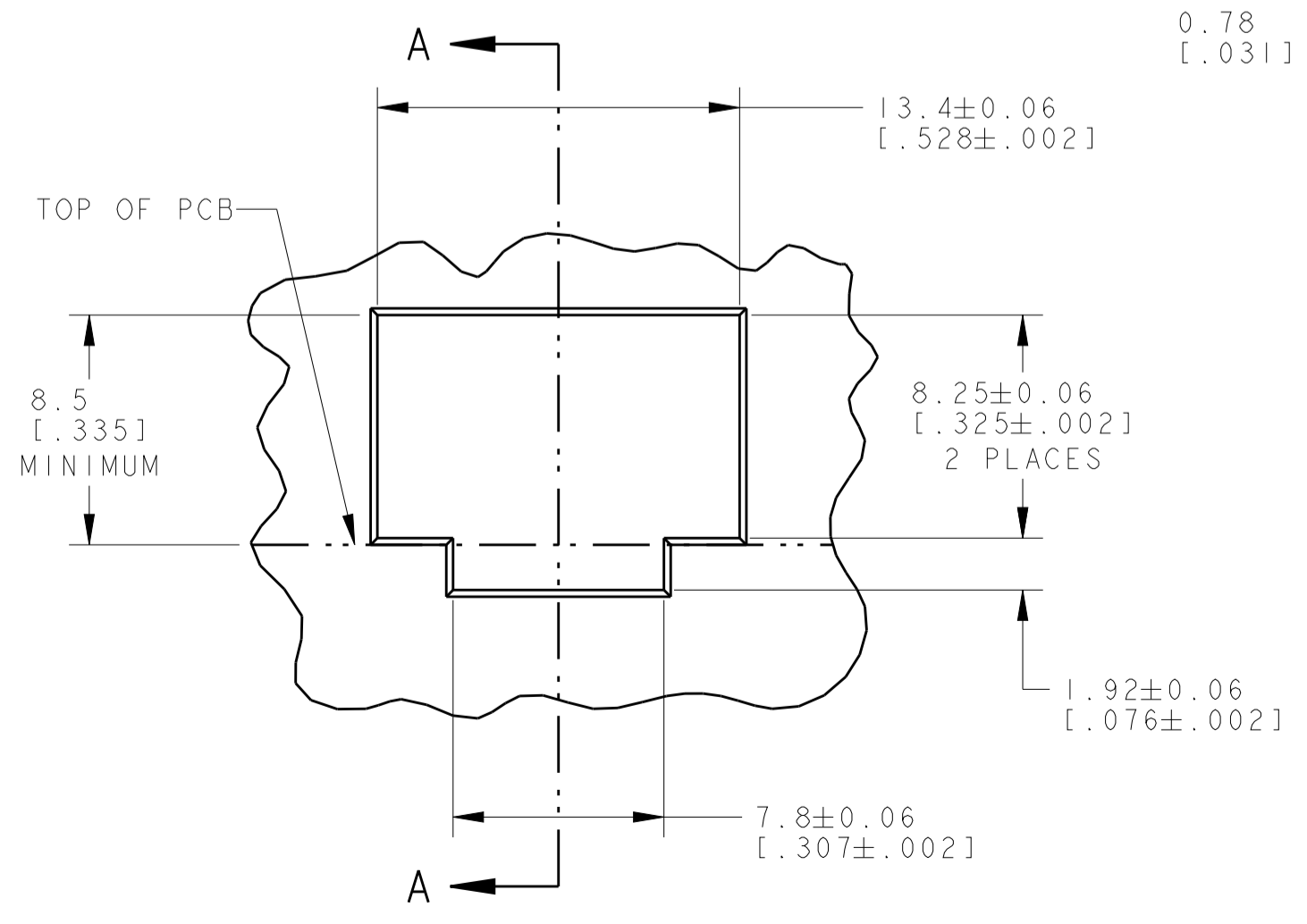
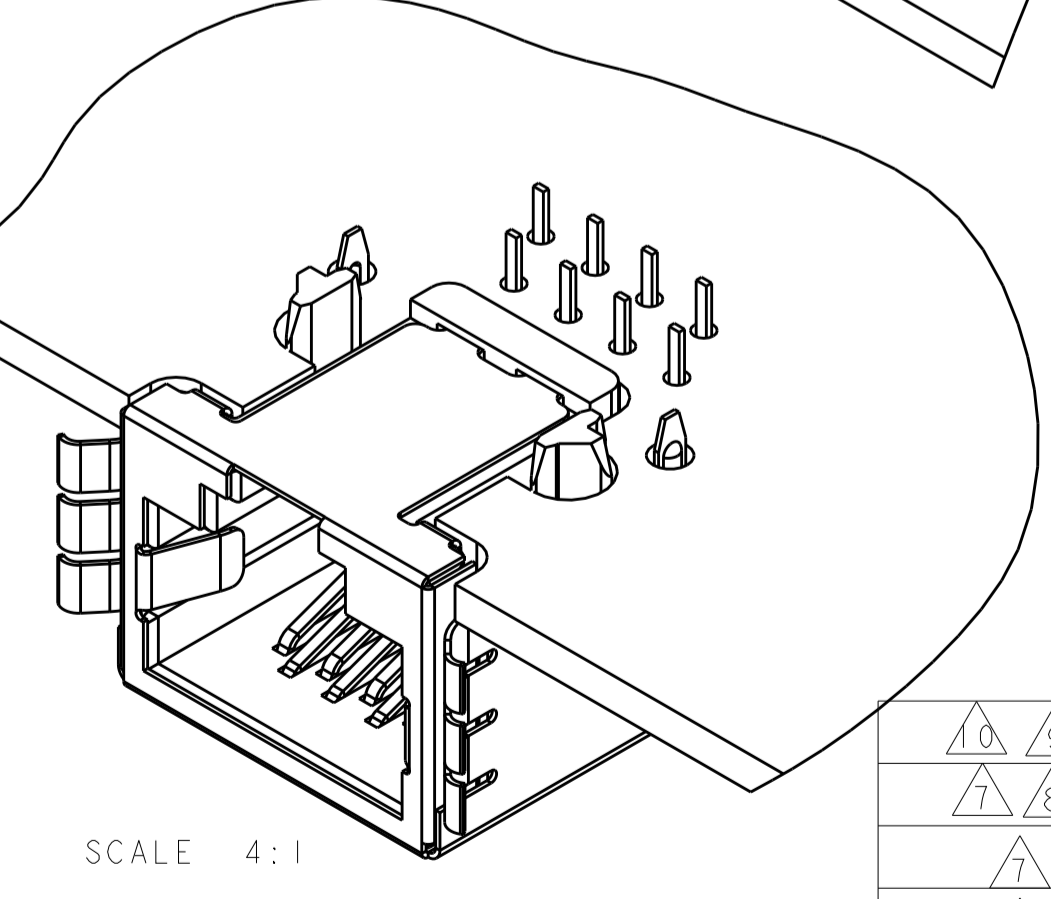
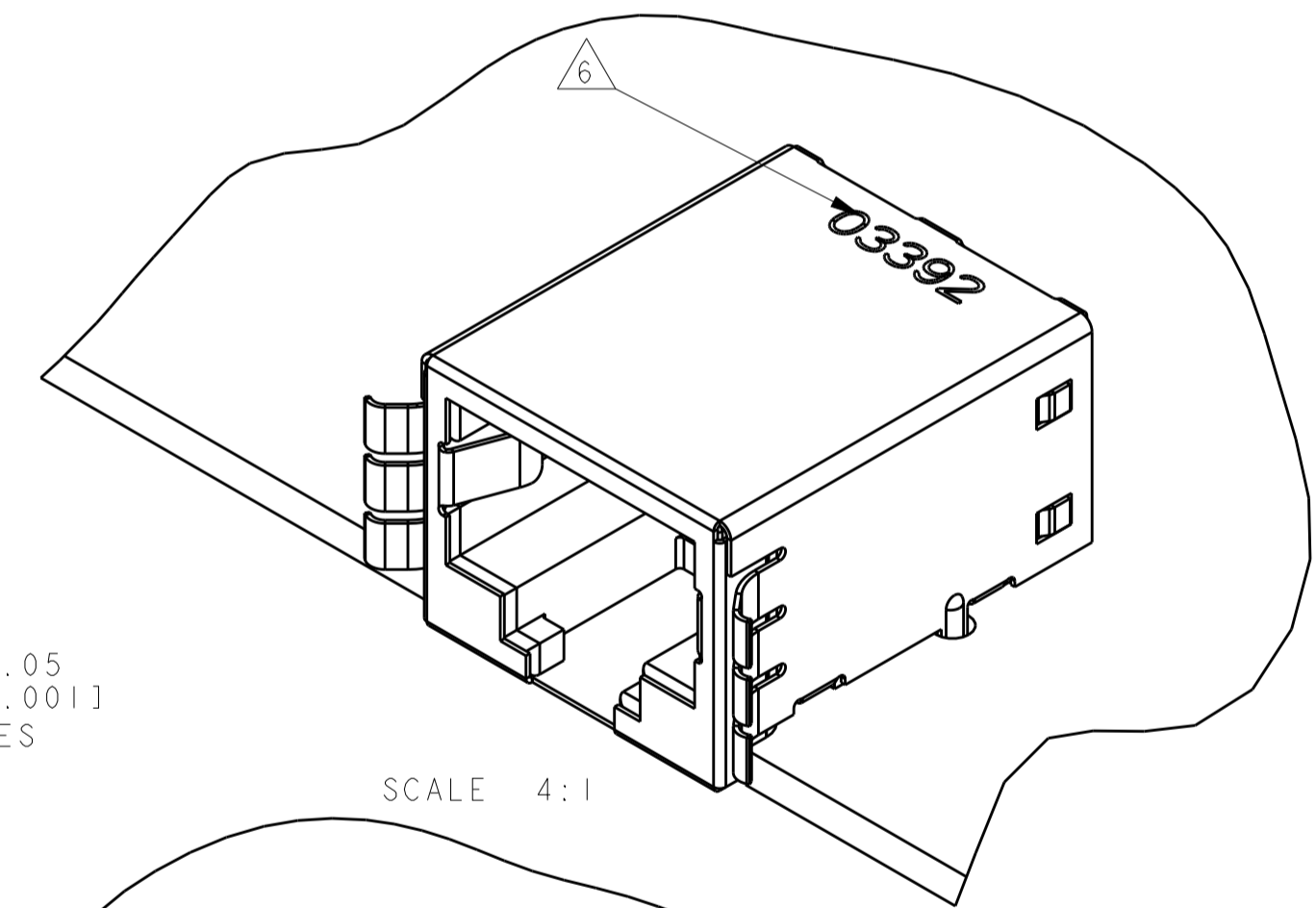
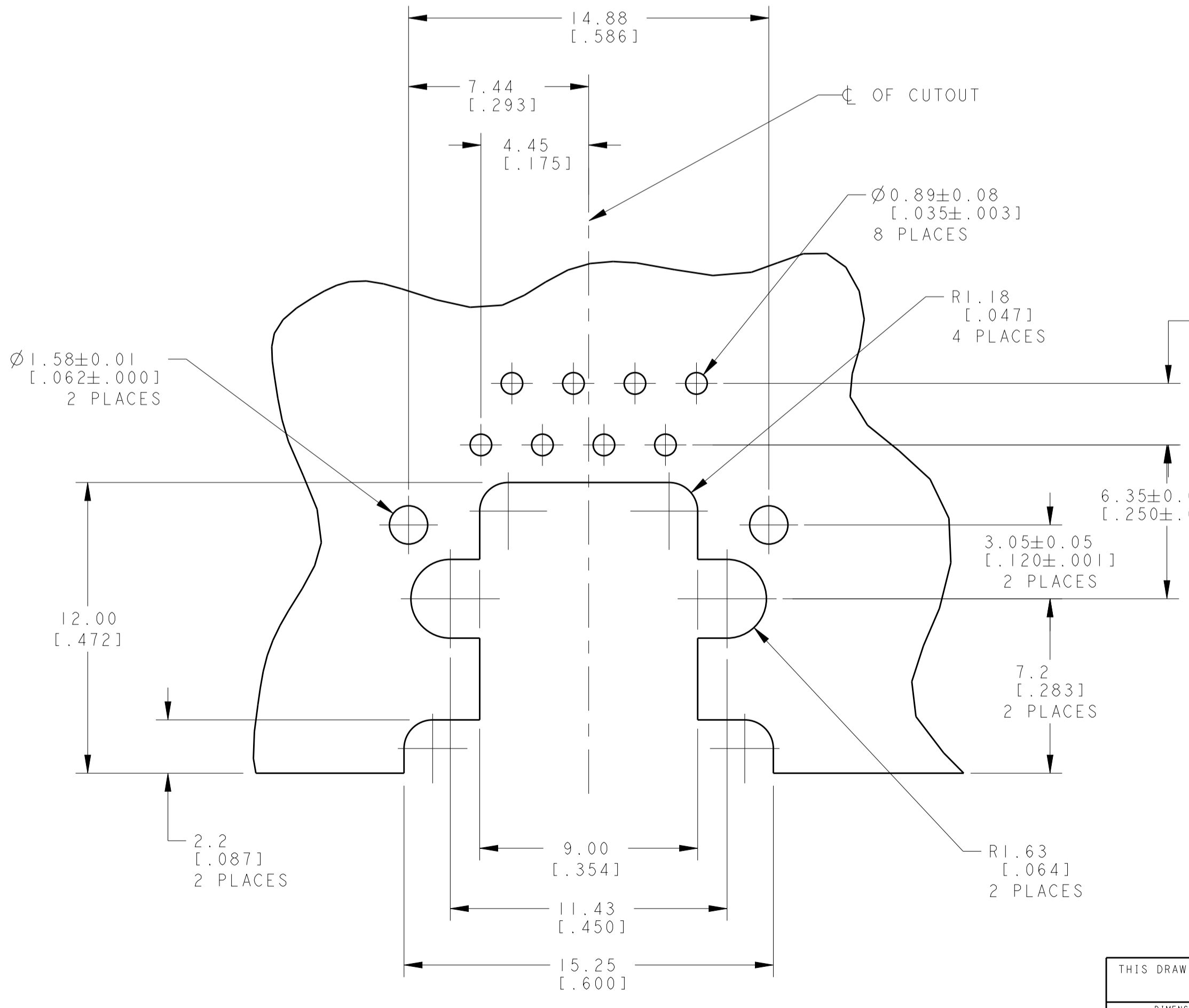
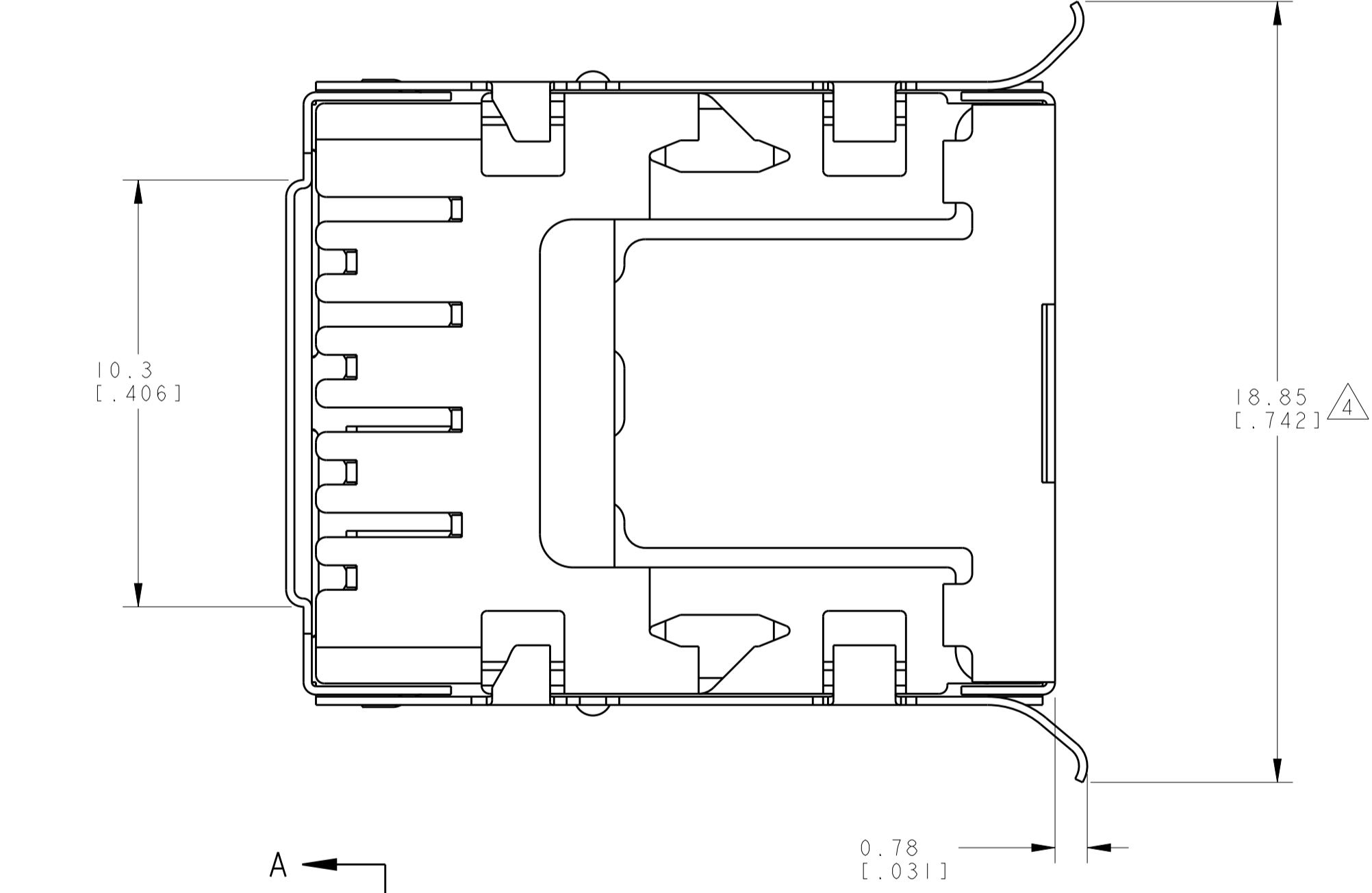


LOC	DIST	REV	DATE	BY	APPV
AA	22	T	24APR2015	LL	SH



- 1 MATERIAL: HOUSING - HIGH TEMPERATURE NYLON, BLACK, UL 94V-0, TERMINALS - 0.25 [.010] THICK PHOSPHOR BRONZE PLATED WITH 3.81µm [.000150] MINIMUM THICK BRIGHT TIN-LEAD IN SOLDER AREA, 1.27µm [.000050] MINIMUM GOLD IN LOCALIZED PLATE AREA. ENTIRE TERMINAL PLATED WITH 1.27µm [.000050] MINIMUM THICK NICKEL. SHIELD - 0.1 [.0039] MIN THICK COPPER ZINC ALLOY, PREPLATED WITH 2.0-4.0µm (.000079- .000157) THICK TIN OVER 1.27µm (.000050) MIN THICK NICKEL
- 2 JACK CAVITY CONFORMS TO FCC RULES AND REGULATIONS PART 68, SUBPART F.
- 3 THIS DIMENSION REPRESENTS THE TOTAL HEIGHT OF THE CONNECTOR FROM THE TOP OF THE PC BOARD.
- 4 THIS DIMENSION HAS A MAXIMUM VALUE OF 20.50 [.807] WHEN JACK IS INSTALLED BEHIND PANEL.
- 5. PACKAGED 66 ASSEMBLIES PER PVC TRAY, 396 PER BOX.
- 6 MANUFACTURING DATE CODE:
ORIENTED AND LOCATED APPROXIMATELY AS SHOWN. LASER PRINTING. TEXT HEIGHT APPROXIMATELY 2MM.
FIRST 2 DIGITS = LAST 2 DIGITS OF YEAR
NEXT 2 DIGITS = MANUFACTURING WORK WEEK
LAST DIGIT = DAY OF WEEK WITH SUNDAY = 1
- 7 MATERIAL: HOUSING - HIGH TEMPERATURE NYLON, BLACK, UL 94V-0, TERMINALS - 0.25 [.010] THICK PHOSPHOR BRONZE PLATED WITH 3.81µm [.000150] MINIMUM THICK MATTE TIN IN SOLDER AREA, 1.27µm [.000050] MINIMUM GOLD IN LOCALIZED PLATE AREA. ENTIRE TERMINAL PLATED WITH 1.27µm [.000050] MINIMUM THICK NICKEL. SHIELD - 0.1 [.0039] MIN THICK COPPER ZINC ALLOY, PREPLATED WITH 2.0-4.0µm (.000079- .000157) THICK TIN OVER 1.27µm (.000050) MIN THICK NICKEL
- 8 PACKED WITH TAPE AND REEL PACKAGE.
- 9 MATERIAL: SHIELD - 0.1 [.0039] MIN THICK COPPER ZINC ALLOY, PREPLATED WITH 1.27µm (.000050) MIN THICK NICKEL, PCB GROUND TABS DIPPED WITH 2.03µm (.000080) MIN TIN. OTHER COMPONENT: AS SAME AS 7
- 10. PACKED WITH DRY PACKING.



SUGGESTED PRINTED CIRCUIT BOARD LAYOUT COMPONENT SIDE SCALE 6:1

10	9	1116062-4
7	8	1116062-3
7		1116062-2
		1116062-1
MATERIAL / FINISH		PART NUMBER

THIS DRAWING IS A CONTROLLED DOCUMENT.

DIMENSIONS:	TOLERANCES UNLESS OTHERWISE SPECIFIED:	OWN: J. AHERON 11NOV98	CHK: D. KEMPKA 11NOV98	APVD: D. KEMPKA 11NOV98	NAME: MODULAR JACK ASSEMBLY, 8 POSITION, SHIELDED, 10mm
mm [INCHES]	0 PLC ±	PRODUCT SPEC	108-1163	APPLICATION SPEC	SIZE: CAGE CODE DRAWING NO: 1100779
	1 PLC ±0.131 [.005]	WEIGHT	3.49 grams	CUSTOMER DRAWING	RESTRICTED TO
	2 PLC ±	FINISH	SEE P/N TABLE	SCALE	8:1
	3 PLC ±			SHEET	1 OF 1
	4 PLC ±			REV	T
	ANGLES ±				

STE TE Connectivity

Mouser Electronics

Authorized Distributor

Click to View Pricing, Inventory, Delivery & Lifecycle Information:

[TE Connectivity:](#)

[1116062-2](#)