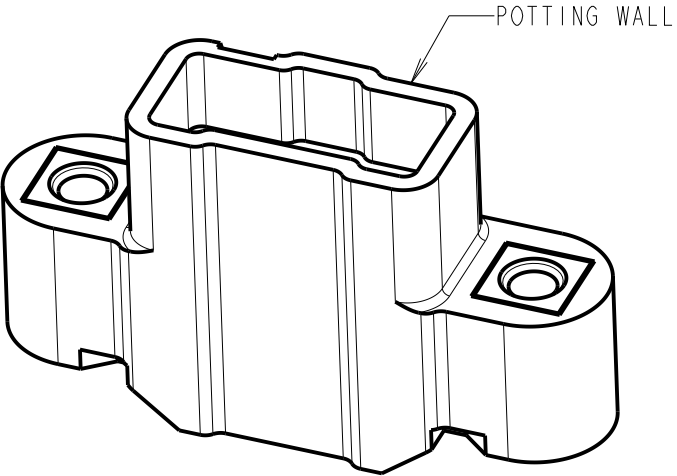
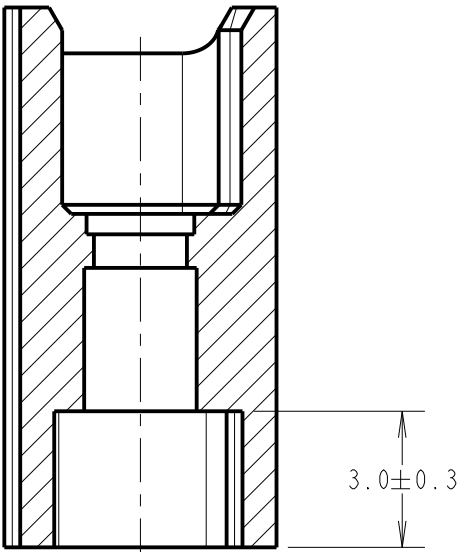
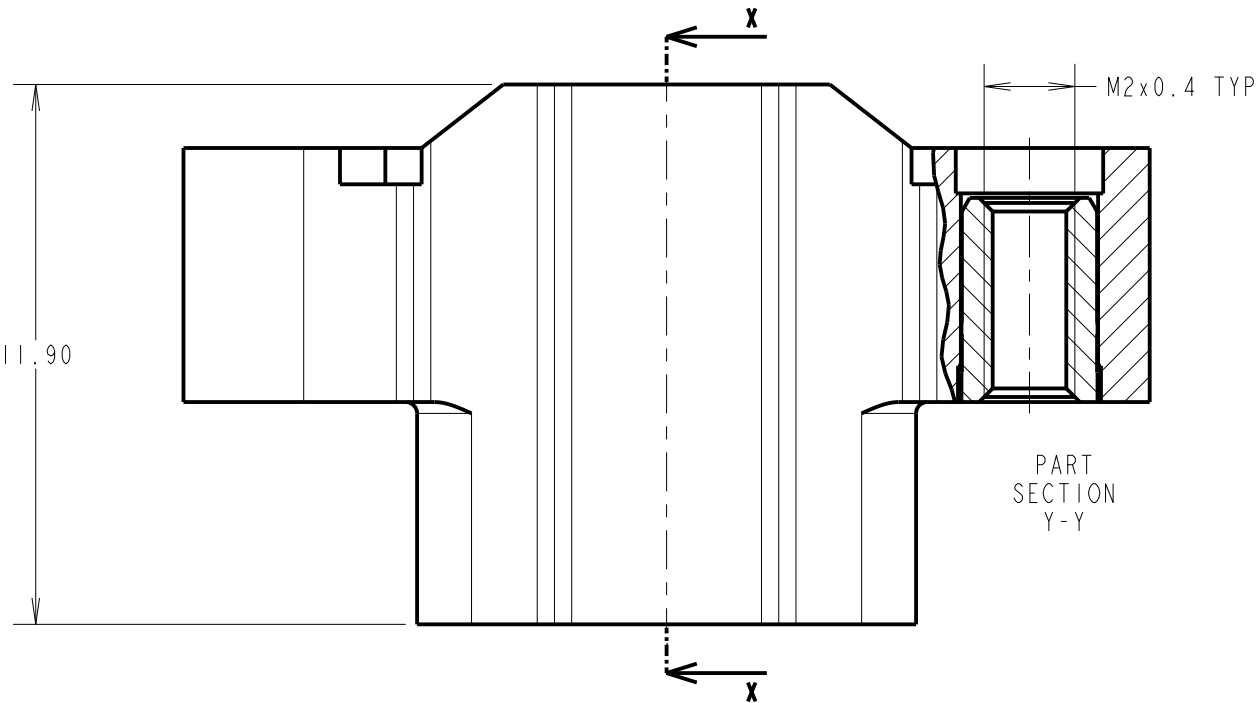
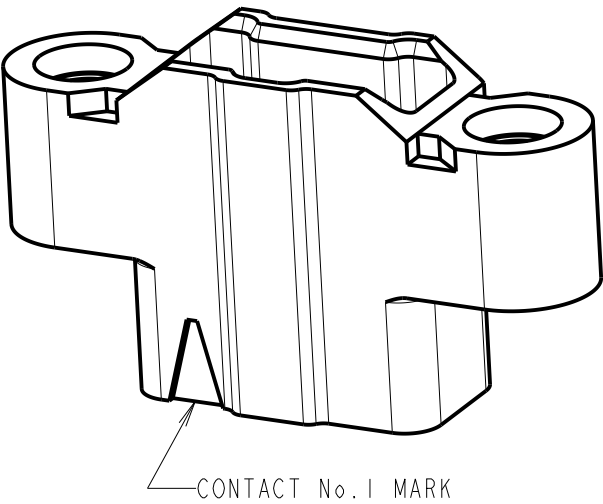
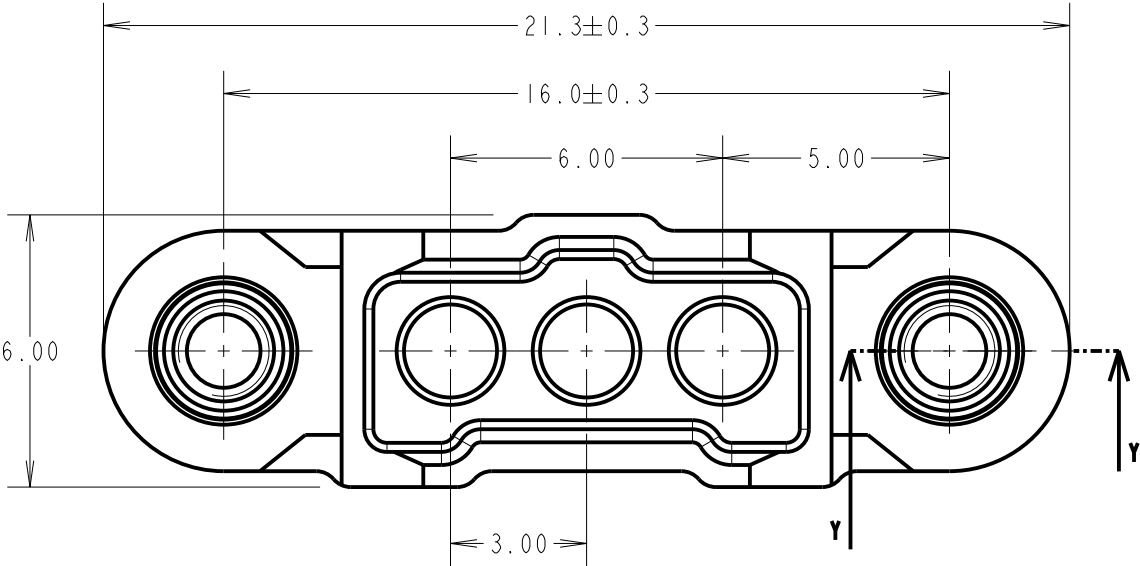


Customer Information Sheet

| | | | | | |
|-----------------------------|-------------------|---|--------------|------------------------|----------------------|
| DRAWING No.: M300-3250396M1 | IF IN DOUBT - ASK | © | NOT TO SCALE | THIRD ANGLE PROJECTION | ALL DIMENSIONS IN mm |
|-----------------------------|-------------------|---|--------------|------------------------|----------------------|



| | | | |
|-----------------------|------|----------|-------|
| RTP | 2 | 09.12.21 | 31253 |
| NAME | ISS. | DATE | CN/CO |
| APPROVED: R.PORTLOCK | | | |
| CHECKED: M.RUDKIN | | | |
| DRAWN: MARK G PLESTED | | | |
| CUSTOMER REF.: | | | |
| ASSEMBLY DRG: | | | |

NOTES:
1. FOR USE WITH M300-1010045 & M300-1020045 CONTACTS (NOT INCLUDED).
2. SEE COMPONENT SPECIFICATION C048XX (LATEST ISSUE) FOR PRODUCT SPECIFICATION AND WIRING/CRIMPING ASSEMBLY INSTRUCTIONS.

HARWIN

www.harwin.com
technical@harwin.com

THIS DRAWING AND ANY INFORMATION OR DESCRIPTIVE MATTER SET OUT HEREON ARE CONFIDENTIAL AND COPYRIGHT PROPERTY OF THE HARWIN GROUP AND MUST NOT BE DISCLOSED, LOANED, COPIED OR USED FOR MANUFACTURING, TENDERING OR FOR ANY OTHER PURPOSE WITHOUT THEIR WRITTEN PERMISSION.

| |
|-----------------|
| TOLERANCES |
| X. = ±1mm |
| X.X = ±0.50mm |
| X.XX = ±0.20mm |
| X.XXX = ±0.01mm |
| ANGLES = ±5° |
| UNLESS STATED |

| | |
|-----------|-----------------|
| MATERIAL: | SEE ABOVE |
| FINISH: | SEE ABOVE |
| S/AREA: | mm ² |

| | |
|--|------------|
| TITLE: 1mm POWER CONNECTOR SIL CRIMP HOUSING WITH POTTING WALL MALE ASSEMBLY | |
| DRAWING NUMBER: | SHT 2 OF 2 |
| M300-3250396M1 | |

Mouser Electronics

Authorized Distributor

Click to View Pricing, Inventory, Delivery & Lifecycle Information:

Harwin:

[M300-3250396M1](#)