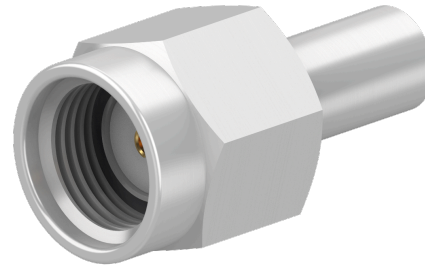


COAXIAL CONNECTOR, SMA-reverse, 50 Ohm, Straight cable plug (male)

11_SMA-R50-2-113/133_N

Properties

- Excellent return loss
- Intermateable with PC3.5 and SK
- Applicable in frequencies up to 18 GHz



Product configuration		
Interface type	Gender	Standard
SMA-reverse	plug	HUBER+SUHNER-SMA-R50

Interface and material data		
Piece parts	Material	Plating
Centre contact	Copper Beryllium Alloy	SUCOPRO / Gold Plating
Outer conductor	Brass	SUCOPLATE (R) Plating
Body	Brass	SUCOPLATE (R) Plating
Insulator	PFA / PTFE	
Coupling nut	Brass	SUCOPLATE (R) Plating
Gasket	VMQ (Silicone rubber)	
Crimp ferrule	Copper	SUCOPLATE (R) Plating

Electrical data	
Impedance	50 Ω
Interface frequency	18 GHz

Mechanical data	
Weight	0.0027 kg
Mating cycles	500
Cable entry centre contact	soldered
Cable entry outer contact	crimped

Environmental data	
Operation temperature	-65 °C ... 165 °C

COAXIAL CONNECTOR, SMA-reverse, 50 Ohm, Straight cable plug (male)

11_SMA-R50-2-113/133_N

Material compliance			
Item number	Directive / Regulation	Rating	Exemptions / Details
84130701	RoHS 2011/65/EU and (EU) 2015/863	Compliant with exemption	6c
84117824	RoHS 2011/65/EU and (EU) 2015/863	Compliant with exemption	6c

Ordering Information Table		
Item number	Item description	Packaging type
84130701	11_SMA-R50-2-113/133_NE	Single
84117824	11_SMA-R50-2-113/133_NP	Bulk 500 pcs

Suitable cables	
Cable group	U4 - 2 mm / 50 Ohm
Suitable cables	K_02252_D
	G_02232_D
	ENVIROFLEX_316_D

Additional Information	
Only as assembly	No

Suitable tools		
Item number	Item description	Type of tool
22544756	76_Z-0-2-51	Crimping dies
22543181	76_Z-0-2-1	Crimping dies
22544715	74_Z-0-0-68	Knives / Blades
22544516	74_Z-0-0-55	Gauges
22652086	74_Z-0-0-323	Locator

HUBER+SUHNER is certified by ISO 9001, ISO 14001, ISO 45001, IATF 16949, AS/EN 9100 and ISO/TS 22163-IRIS. Waiver: Facts and figures herein are for information only and do not represent any warranty of any kind.
DOCUMENT PIM-P3430 / Date of publication: 12.07.2025 / uncontrolled copy