



# Battery Holders

Manufactured from quality moulding and metal components to ensure a secure and reliable connection, Bulgin's battery holder range caters for battery sizes 1/2AA, AAA(R03), AA(R6), C(R14), D(R20) and PP3(6R61), accommodating 1, 2, 3 or 4 cells.

There's a choice of fixing styles including screw and flange panel fixing, PCB and base mounting versions.

The panel mounting versions are now available in two styles; standard fixing and front panel sealed to IP67, extending the applications into harsher external environments where dust or water would inhibit equipment operation.

The open frame styles are designed to be either PCB or base mounted and most have an interlocking facility to join adjacent holders together.

Principle applications include portable equipment and memory back-up.

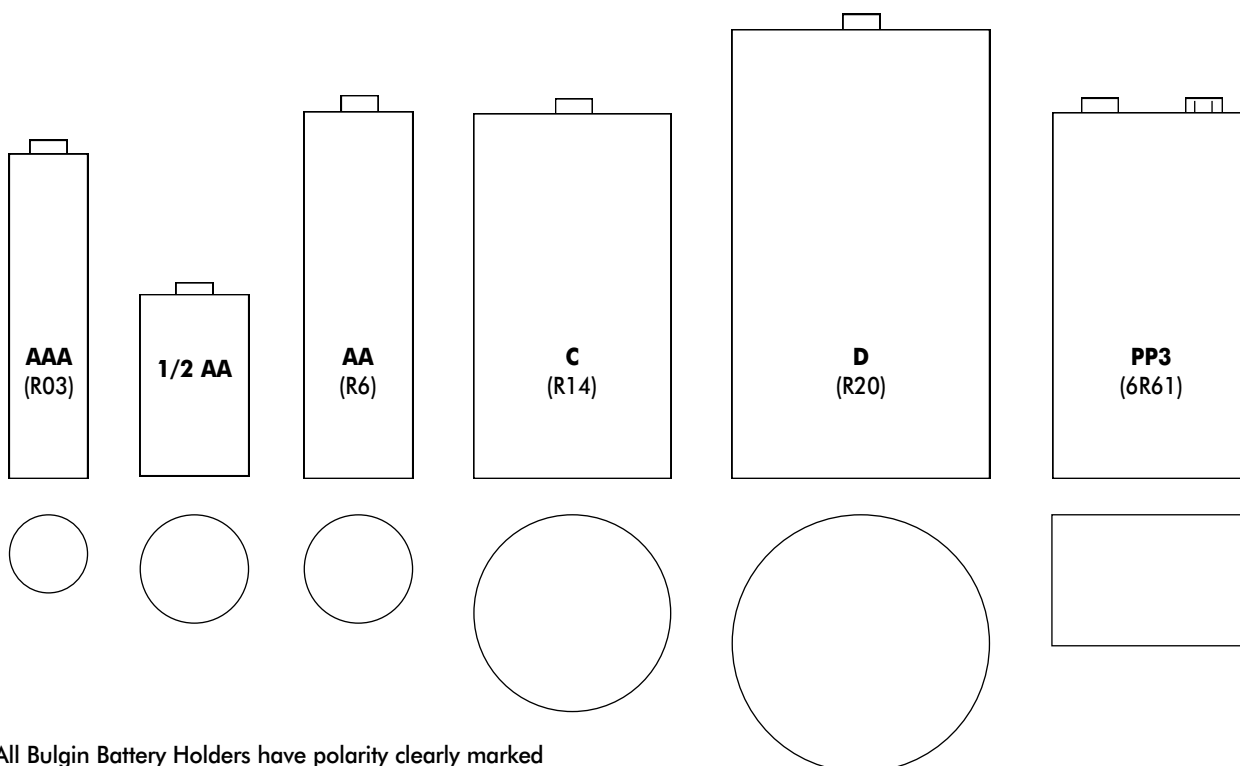
| Type                                   | Cell Size | Page |
|--|-----------|------|
| <b>Panel Mounting (sealed to IP67)</b> |           |      |
| BXS011/1-BXS013/1                      | AA        | 9    |
| BXS001/1-BXS003/1                      | C         | 9    |
| BXS016-BXS018                          | D         | 9    |
| <b>Panel Mounting</b>                  |           |      |
| BX0011/1-BX0013/1                      | AA        | 10   |
| BX0027                                 | AA        | 10   |
| BX0001/1-BX0003/1                      | C         | 10   |
| BX0016-BX0018                          | D         | 11   |
| BX0023                                 | PP3       | 11   |
| BX0026                                 | PP3       | 11   |
| <b>PC/Base Mounting</b>                |           |      |
| BX0031                                 | 1/2AA     | 12   |
| BX0034                                 | AAA       | 12   |
| BX0035                                 | AA        | 12   |
| BX0036                                 | C         | 13   |
| BX0037                                 | D         | 13   |
| BX0033                                 | PP3       | 13   |

## Battery Holder Selector

Maximum Battery Size to BSEN 60086-1 and -2

| Battery size | Battery Dimensions    | No. of Cells | Mounting     | Part No. |
|--------------|-----------------------|--------------|--------------|----------|
| 1/2AA        | Ø14.9 x 25.1          | 1            | PCB/Base     | BX0031   |
| AAA (R03)    | Ø10.5 x 44.5          | 1            | PCB/Base     | BX0034   |
| AA (R6)      | Ø14.5 x 50.5          | 1            | PCB/Base     | BX0035   |
|              |                       | 1            | Panel        | BX0011/1 |
|              |                       | 2            | Panel        | BX0012/1 |
|              |                       | 3            | Panel        | BX0013/1 |
|              |                       | 4            | Panel        | BX0027   |
|              |                       | 1            | Panel Sealed | BXS011/1 |
|              |                       | 2            | Panel Sealed | BXS012/1 |
|              |                       | 3            | Panel Sealed | BXS013/1 |
| C (R14)      | Ø26.2 x 50            | 1            | PCB/Base     | BX0036   |
|              |                       | 1            | Panel        | BX0001/1 |
|              |                       | 2            | Panel        | BX0002/1 |
|              |                       | 3            | Panel        | BX0003/1 |
|              |                       | 1            | Panel Sealed | BXS001/1 |
|              |                       | 2            | Panel Sealed | BXS002/1 |
| D (R20)      | Ø34.2 x 61.5          | 3            | Panel Sealed | BXS003/1 |
|              |                       | 1            | PCB/Base     | BX0037   |
|              |                       | 1            | Panel        | BX0016   |
|              |                       | 2            | Panel        | BX0017   |
|              |                       | 3            | Panel        | BX0018   |
|              |                       | 1            | Panel Sealed | BXS016   |
| PP3 (6R61)   | W26.5 x D17.5 x H48.5 | 2            | Panel Sealed | BXS017   |
|              |                       | 3            | Panel Sealed | BXS018   |
|              |                       | 1            | PCB/Base     | BX0033   |
|              |                       | 1            | Panel        | BX0023   |
|              |                       | 2            | Panel        | BX0026   |

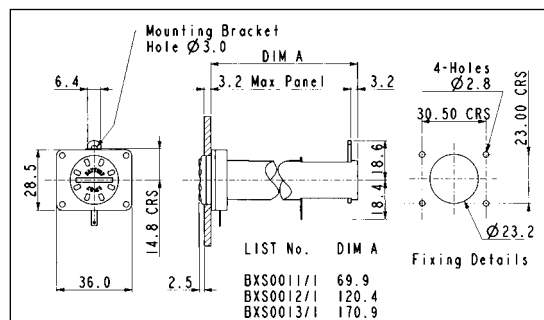
Note: As batteries from different manufacturers may vary slightly in size, Dimensions & Drawings are approximate only.



**Front panel sealed to IP67**
**AA SIZE BATTERY HOLDER**

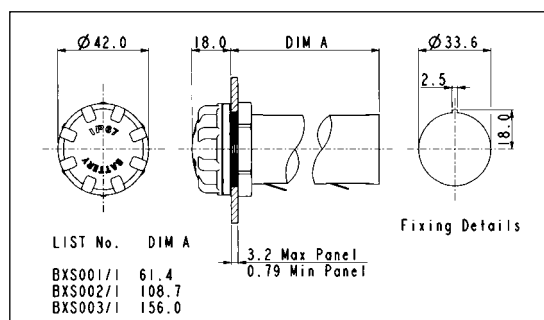
**BX5011/1**

- 1, 2 or 3 Cells
- Flanged Panel Mount
- Bayonet with finger/coin slot release
- Supplied with gasket and sealing grommets for screws


**C SIZE BATTERY HOLDER**

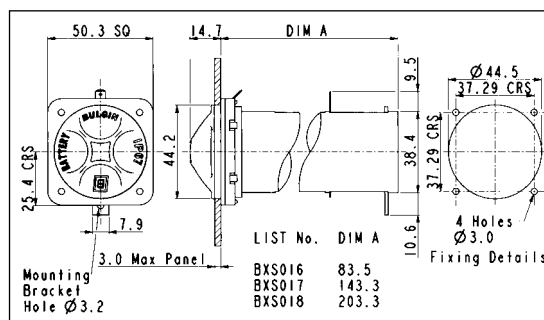
**BX5001/1**

- 1, 2 or 3 Cells
- Panel Mount
- Screw Cap/Hand release
- Supplied with gasket


**D SIZE BATTERY HOLDER**

**BX5016**

- 1, 2 or 3 Cells
- Flanged Panel Mount
- Bayonet/finger release
- Supplied with flange gasket and sealing grommets for screws



| Specification             | BXS011/1, BXS012/1, BXS013/1  | BXS001/1, BXS002/1, BXS003/1   | BXS016, BXS017, BXS018  |
|---------------------------|---|--|---|
| Battery/Cell Type:        | AA (R6)   | C (R14)  | D (R20)   |
| No. Cells:                | BXS011/1 - 1 cell<br>BXS012/1 - 2 cells<br>BXS013/1 - 3 cells                                     | BXS001/1 - 1 cell<br>BXS002/1 - 2 cells<br>BXS003/1 - 3 cells                                  | BXS016 - 1 cell<br>BXS017 - 2 cells<br>BXS018 - 3 cells                 |
| Terminations:             | 2.8 series tabs/solder tags   | 2.8 series tabs/solder tags  | 4.8 series tabs/solder tags   |
| Operating Temperature:    | -30°C to +70°C  | -30°C to +70°C   | -30°C to +70°C  |
| Mouldings:                | Nylon<br>Glass filled Polyester<br>Polycarbonate  | Nylon<br>Glass filled Polyester  | Nylon<br>Glass filled Polyester   |
| Flammability Rating:      | UL94V-0   | UL94V-0  | UL94V-0   |
| Contacts:                 | Brass, Tin Plated - rear contact<br>Nickel Silver, clean - front contact<br>and cap contact plate | Brass, Tin Plated - front and rear contacts<br>Nickel Silver, clean - cap contact plate        | Brass, Nickel Plated - front and rear<br>contacts and cap contact plate |
| Features:                 | Bayonet cap with finger grip and coin slot<br>Rear support bracket                                | Screw on cap with finger grip<br>Recommended torque for panel ring<br>1.13-1.7Nm (10-15lbf.in) | Bayonet cap with finger grip<br>Rear support bracket                    |
| Sealing (front of panel): | Protection classification<br>IP67, BS60529:1992   | Protection classification<br>IP67, BS60529:1992  | Protection classification<br>IP67, BS60529:1992                         |
| Notes:                    | Recommend 2 & 3 cell versions are<br>supported by rear bracket                                    |  | Recommend 2 & 3 cell versions are<br>supported by rear bracket          |
| RoHS                      | Compliant   | Compliant  | Compliant   |

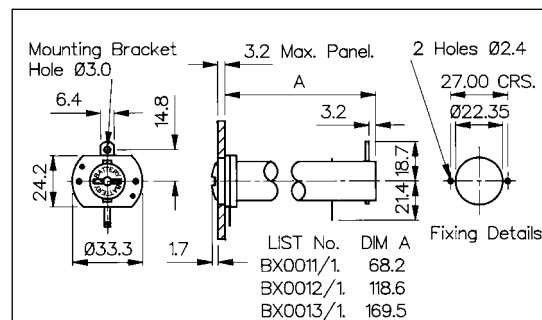
## Panel Mounting

### AA SIZE BATTERY HOLDER

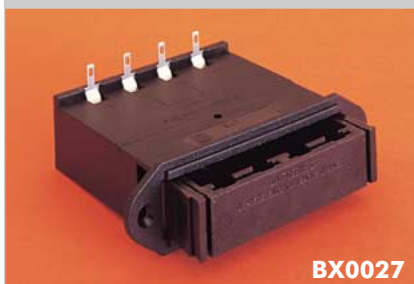


**BX0011/1**

- 1, 2 or 3 Cells
- Flanged Panel Mount
- Bayonet/Screwdriver release

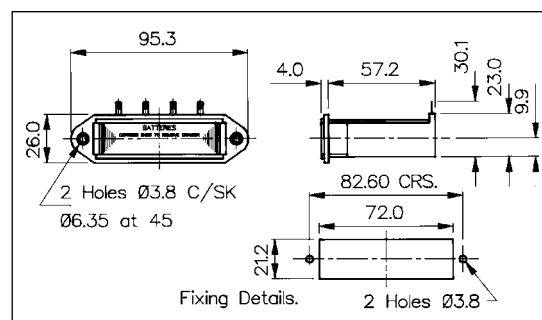


### AA SIZE BATTERY HOLDER



**BX0027**

- 4 Cells
- Flanged Panel Mount
- Drawer function

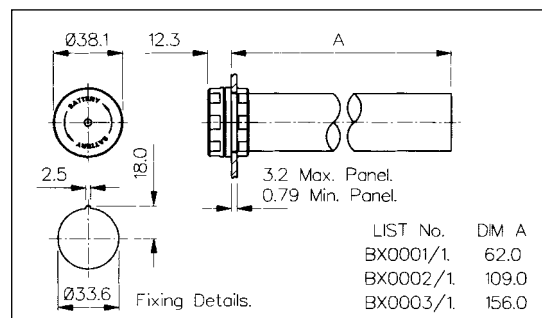


### C SIZE BATTERY HOLDER



**BX0001/1**

- 1, 2 or 3 Cells
- Panel Mount
- Screw Cap/Hand release

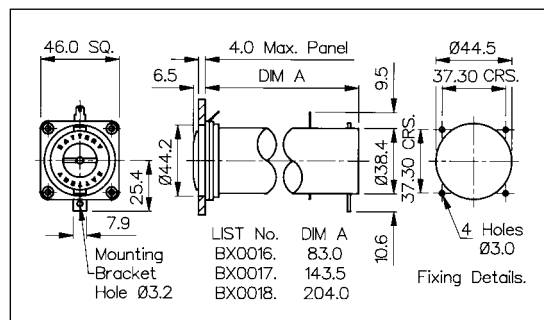
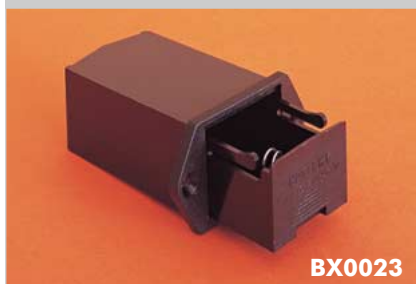


| Specification          | BX0011/1, BX0012/1, BX0013/1                                  | BX0027  | BX0001/1, BX0002/1, BX0003/1   |
|------------------------|---|---|--|
| Battery/Cell Type:     | AA (R6)   | AA (R6)   | C (R14)  |
| No. Cells:             | BX0011/1 - 1 cell<br>BX0012/1 - 2 cells<br>BX0013/1 - 3 cells | 4 cells   | BX0001/1 - 1 cell<br>BX0002/1 - 2 cells<br>BX0003/1 - 3 cells            |
| Terminations:          | 2.8 series tabs/solder tags                                   | 4 solder tags (can be wired in series or in pairs)  | 2.8 series tabs/solder tags  |
| Operating Temperature: | -30°C to +70°C  | -30°C to +70°C                                      | -30°C to +70°C   |
| Flammability Rating:   | UL94V-0   | UL94V-0   | UL94V-0  |
| Mouldings:             | Glass Filled Nylon & Polyester                                | Glass Filled Nylon                                  | Nylon & Glass Filled Nylon   |
| Contacts:              | Brass, Tin Plated<br>Nickel Silver, clean                     | Phosphor Bronze, Tin Plated<br>Nickel Silver, clean | Nickel Silver, clean<br>Brass, Tin Plated                                |
| Features:              | Bayonet cap with coin slot<br>Rear support bracket            | Removable loading/latching drawer                   | Screw on cap. Recommended torque for panel ring 1.13-1.7Nm (10-15lbf.in) |
| Notes:                 | Recommend 2 & 3 cell versions are supported by rear bracket   |   |  |
| RoHS                   | Compliant   | Compliant   | Compliant  |

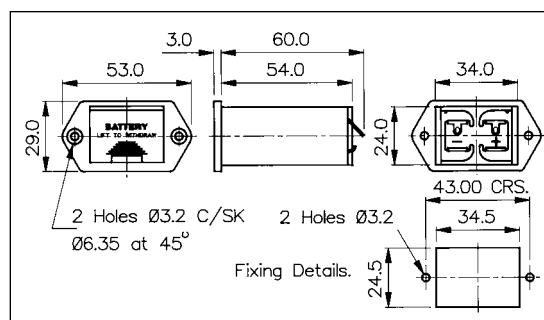
**Panel Mounting**
**D SIZE BATTERY HOLDER**

**BX0016**

- 1, 2 or 3 Cells
- Flanged Panel Mount
- Bayonet/Screwdriver release

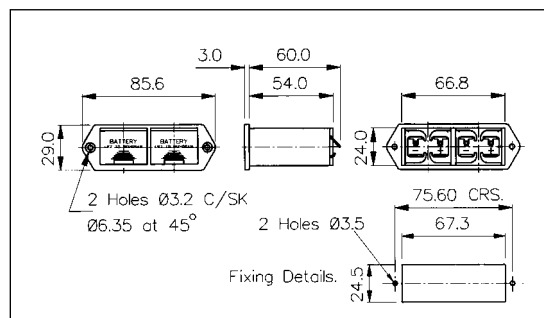

**PP3 SIZE BATTERY HOLDER**

**BX0023**

- 1 Cell
- Flanged Panel Mount
- Drawer function


**PP3 SIZE BATTERY HOLDER**

**BX0026**

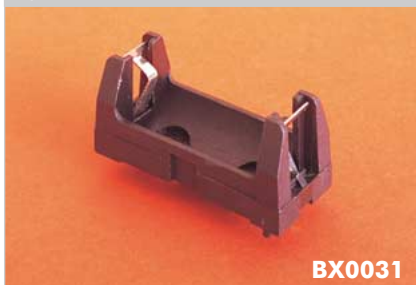
- 2 Cells
- Flanged Panel Mount
- Drawer function



| Specification          | BX0016, BX0017, BX0018                                      | BX0023                      | BX0026                      |
|------------------------|---|-----------------------------|-----------------------------|
| Battery/Cell Type:     | D (R20)   | PP3 (6R61)                  | PP3 (6R61)                  |
| No. Cells:             | BX0016 - 1 cell<br>BX0017 - 2 cells<br>BX0018 - 3 cells     | 1 cell                      | 2 cells                     |
| Terminations:          | 4.8 series tabs/solder tags                                 | Solder tag                  | Solder tag                  |
| Operating Temperature: | -30°C to +70°C  | -30°C to +70°C              | -30°C to +70°C              |
| Flammability Rating:   | UL94V-0   | UL94V-0                     | UL94V-0                     |
| Mouldings:             | Nylon & Polycarbonate                                       | Glass Filled Nylon          | Glass Filled Nylon          |
| Contacts:              | Brass, Nickel Plated  | Phosphor Bronze, Tin Plated | Phosphor Bronze, Tin Plated |
| Features:              | Bayonet cap with coin slot<br>Rear support bracket          | Removable loading drawer    | Removable loading drawers   |
| Notes:                 | Recommend 2 & 3 cell versions are supported by rear bracket |                             |                             |
| RoHS                   | Compliant   | Compliant                   | Compliant                   |

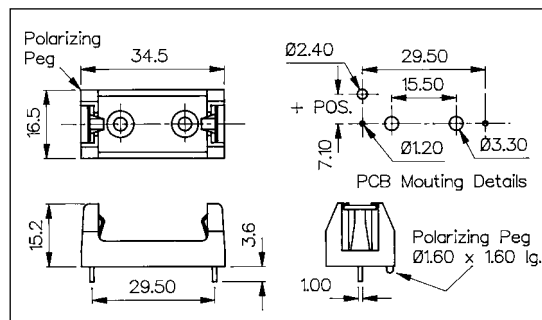
## PC/Base Mounting

### 1/2AA SIZE BATTERY HOLDER

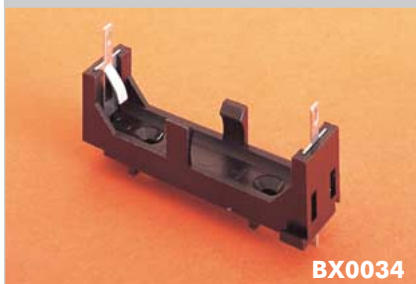


**BX0031**

- 1 Cell
- PC/Base Mount
- Open style

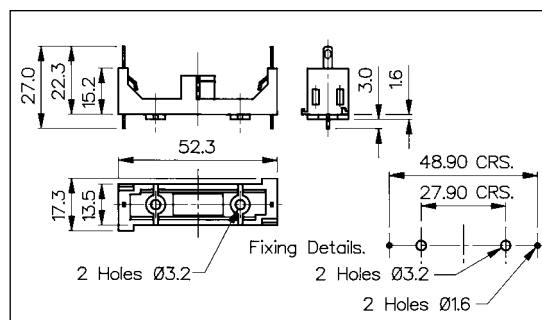


### AAA SIZE BATTERY HOLDER

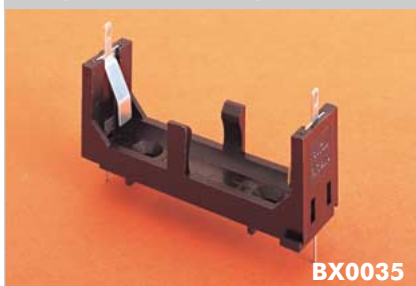


**BX0034**

- 1 Cell
- PC/Base Mount
- Open style

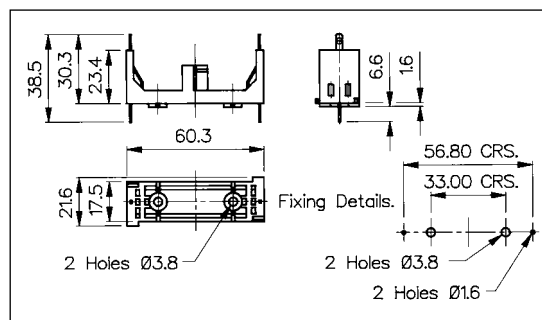


### AA SIZE BATTERY HOLDER



**BX0035**

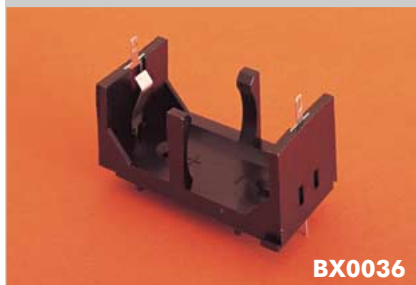
- 1 Cell
- PC/Base Mount
- Open style



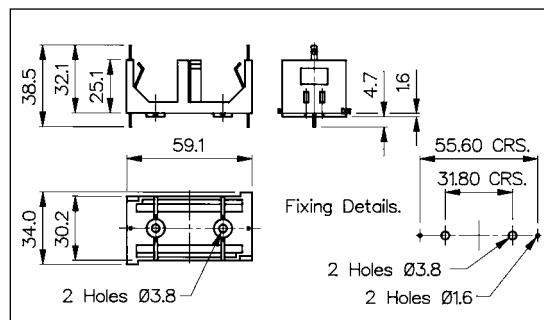
| Specification          | BX0031               | BX0034  | BX0035  |
|------------------------|----------------------|---|---|
| Battery/Cell Type:     | 1/2AA                | AAA (R03)   | AA (R6)   |
| No. Cells:             | 1 cell               | 1 cell  | 1 cell  |
| Terminations:          | P.C. spills          | Dual connections, P.C. spills & 2.8 series tabs/solder tags. (P.C. spills may be removed if required) | Dual connections, P.C. spills & 2.8 series tabs/solder tags. (P.C. spills may be removed if required) |
| Operating Temperature: | -30°C to +70°C       | -30°C to +70°C  | -30°C to +70°C  |
| Mouldings:             | Glass Filled Nylon   | Glass Filled Nylon  | Glass Filled Nylon  |
| Contacts:              | Nickel Silver, clean | Nickel Silver, clean  | Nickel Silver, clean  |
| Features:              | -                    | Interlocking for multiple assemblies  | Interlocking for multiple assemblies  |
| RoHS                   | Compliant            | Compliant   | Compliant   |

## PC/Base Mounting

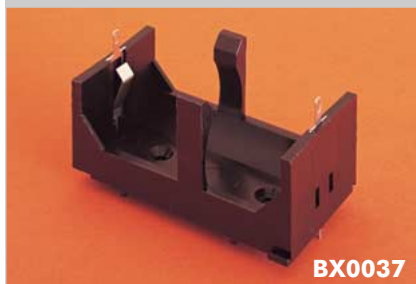
### C SIZE BATTERY HOLDER



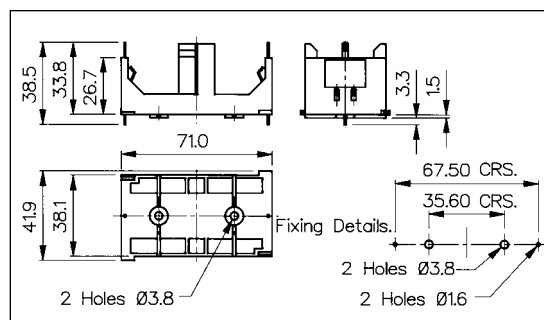
- 1 Cell
- PC/Base Mount
- Open style



### D SIZE BATTERY HOLDER



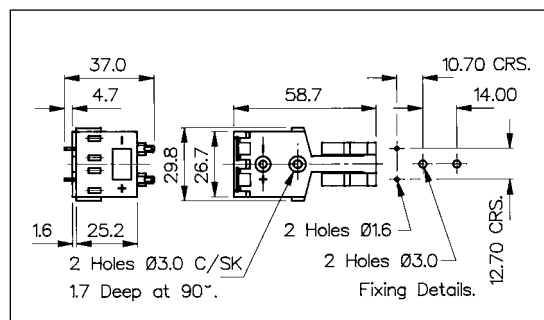
- 1 Cell
- PC/Base Mount
- Open style



### PP3 SIZE BATTERY HOLDER



- 1 Cell
- PC/Base Mount
- Open style



| Specification          | BX0036  | BX0037  | BX0033  |
|------------------------|---|---|---|
| Battery/Cell Type:     | C (R14)   | D (R20)   | PP3 (6R61)  |
| No. Cells:             | 1 cell  | 1 cell  | 1 cell  |
| Terminations:          | Dual connections, P.C. spills & 2.8 series tabs/solder tags. (P.C. spills may be removed if required) | Dual connections, P.C. spills & 2.8 series tabs/solder tags. (P.C. spills may be removed if required) | Dual connections, P.C. spills & 2.8 series tabs/solder tags. (P.C. spills may be removed if required) |
| Operating Temperature: | -30°C to +70°C  | -30°C to +70°C  | -30°C to +70°C  |
| Mouldings:             | Glass Filled Nylon  | Glass Filled Nylon  | Glass Filled Nylon  |
| Contacts:              | Nickel Silver, clean  | Nickel Silver, clean  | Nickel Silver, clean  |
| Features:              | Interlocking for multiple assemblies  | Interlocking for multiple assemblies  |   |
| RoHS                   | Compliant   | Compliant   | Compliant   |