

SEARCH KEYWORD, PART NUMBER



Part Number: 12191910

Product Name: [GT150 Series](#)

6 Way F GT Splice Saver 150 Sealed

[Share](#) [Print](#) [Contact Us About This Item](#)

GET SAMPLES

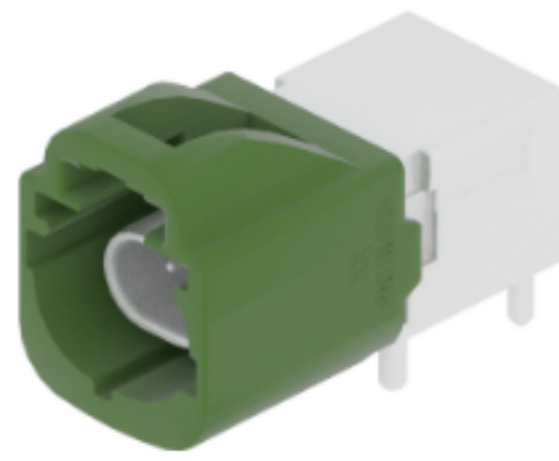


**ATTRIBUTES** DOCUMENTS ECAD COMPATIBLE PARTS

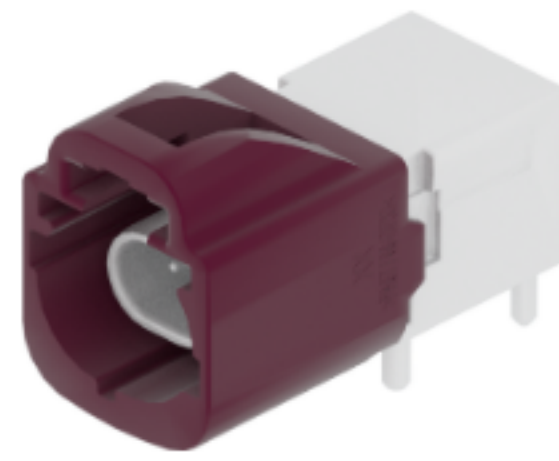
**Attributes**

Product Family GT	Height (mm) 19.5
Product Series 150 Series	Color BLACK
Max. operating temperature +125°C	Primary Locking Mechanism LOCKING LANCE
Min. operating temperature -40°C	Weight (g) 9.44826
No. of Ways 6	Terminal 1 Size 1.5
Cable Exit Orientation 180°	Sealing Sealed
Gender Female	Primary Material PA 66 GF 14
Length (mm) 37.6	
Width (mm) 38.1	

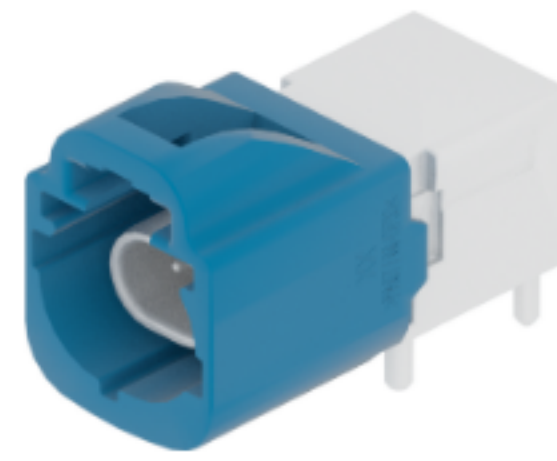
**Other Products**



**35829171**  
2 Way Male 0.5 Unsealed Green



**35829170**  
2 Way Male 0.5 Unsealed Violet

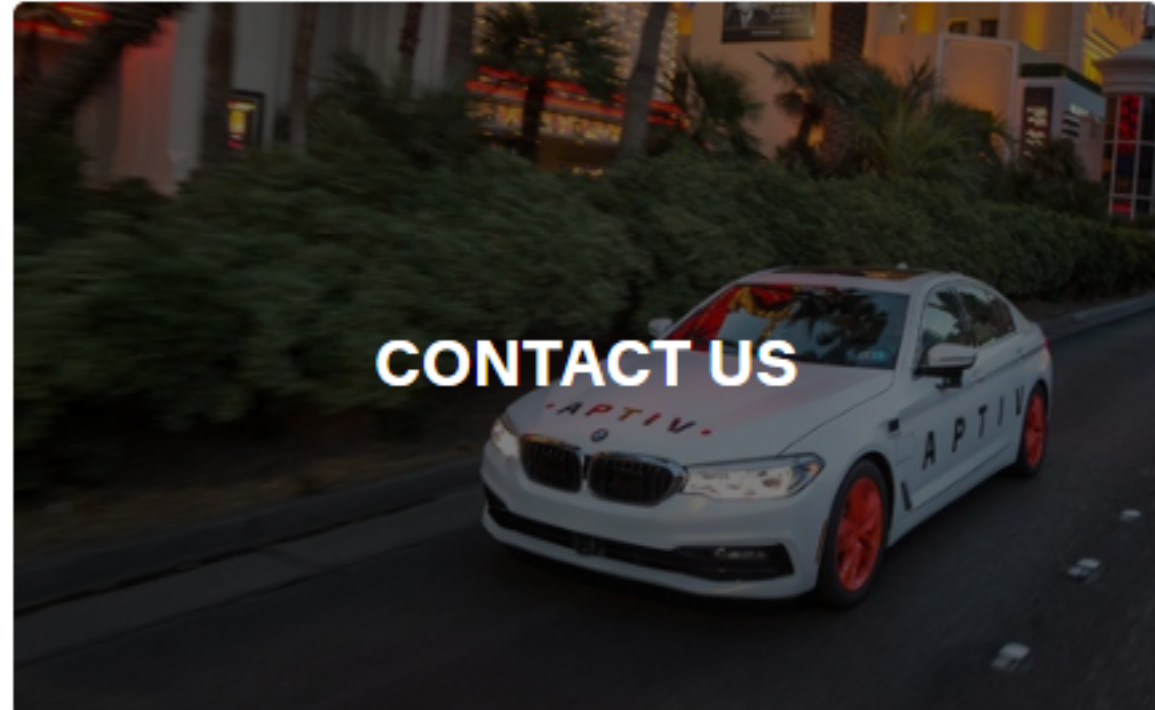


**35829169**  
2 Way Male 0.5 Unsealed Blue

**RESOURCE-CENTER-ITEM**  
COV CONN CLIP CDT BLACK



**Next Steps**



Keep pace with where mobility is going.

See what's next and get the latest updates.

SIGN UP TO GET UPDATES

Don't worry. We won't flood your inbox or share your email.

**INSIGHTS**

- EXPLORE ALL ARTICLES
- CASE STUDIES
- MOBILITY INSIDER
- RESEARCH PUBLICATIONS
- WHITE PAPERS

**SOLUTIONS**

- Advanced Safety
- Connected Services
- Connection Systems
- Connectivity and Security
- Electrical Distribution Systems
- Middleware & DevOps
- Smart Vehicle Architecture
- User Experience
- Vehicle Electrification Systems
- HellermannTyton
- Interactable Automotive Solutions
- Motional
- Winchester Interconnect
- Wind River

**CATALOG**

**ABOUT**

- Our Mission
- Our Businesses
- Our Locations
- Our Foundation
- Sustainability
- Suppliers

**PRIVACY**

- Terms of Use
- Cookie Policy

**LEGAL & COMPLIANCE**

**CAREERS**

- INVESTORS
- NEWSROOM
- CONTACT